

Places background paper - Cuddington and Sandiway

1 Cuddington and Sandiway 2

2 Socio-economic profile 3

3 Availability of services and facilities 9

 Social and community infrastructure 10

 Green infrastructure, sport and leisure 11

 Local retail and services 12

4 Accessibility / access to public transport 13

5 Constraints - natural / built environment 15

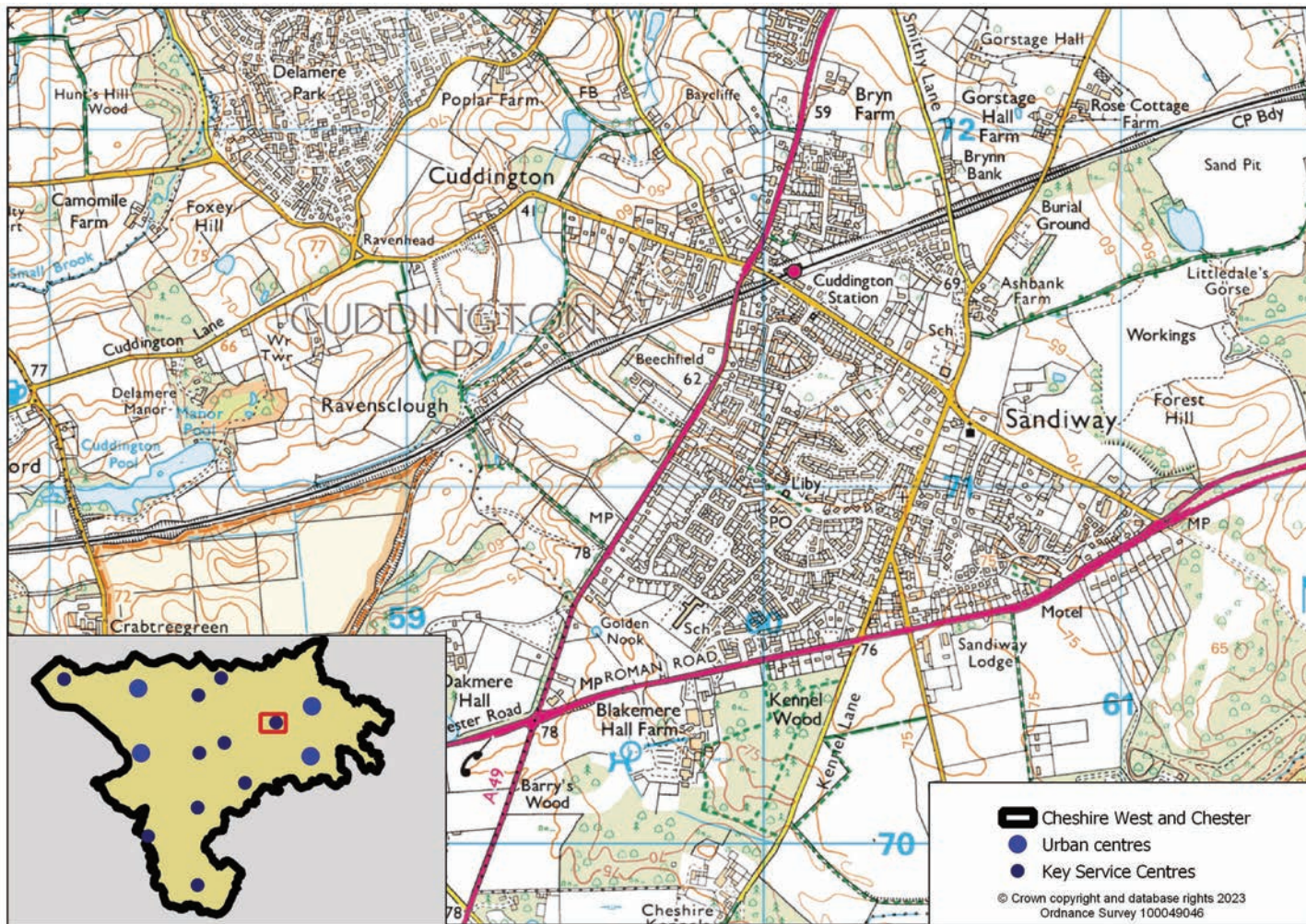
6 Cuddington and Sandiway profile summary 17

1 Cuddington and Sandiway

1 Cuddington and Sandiway

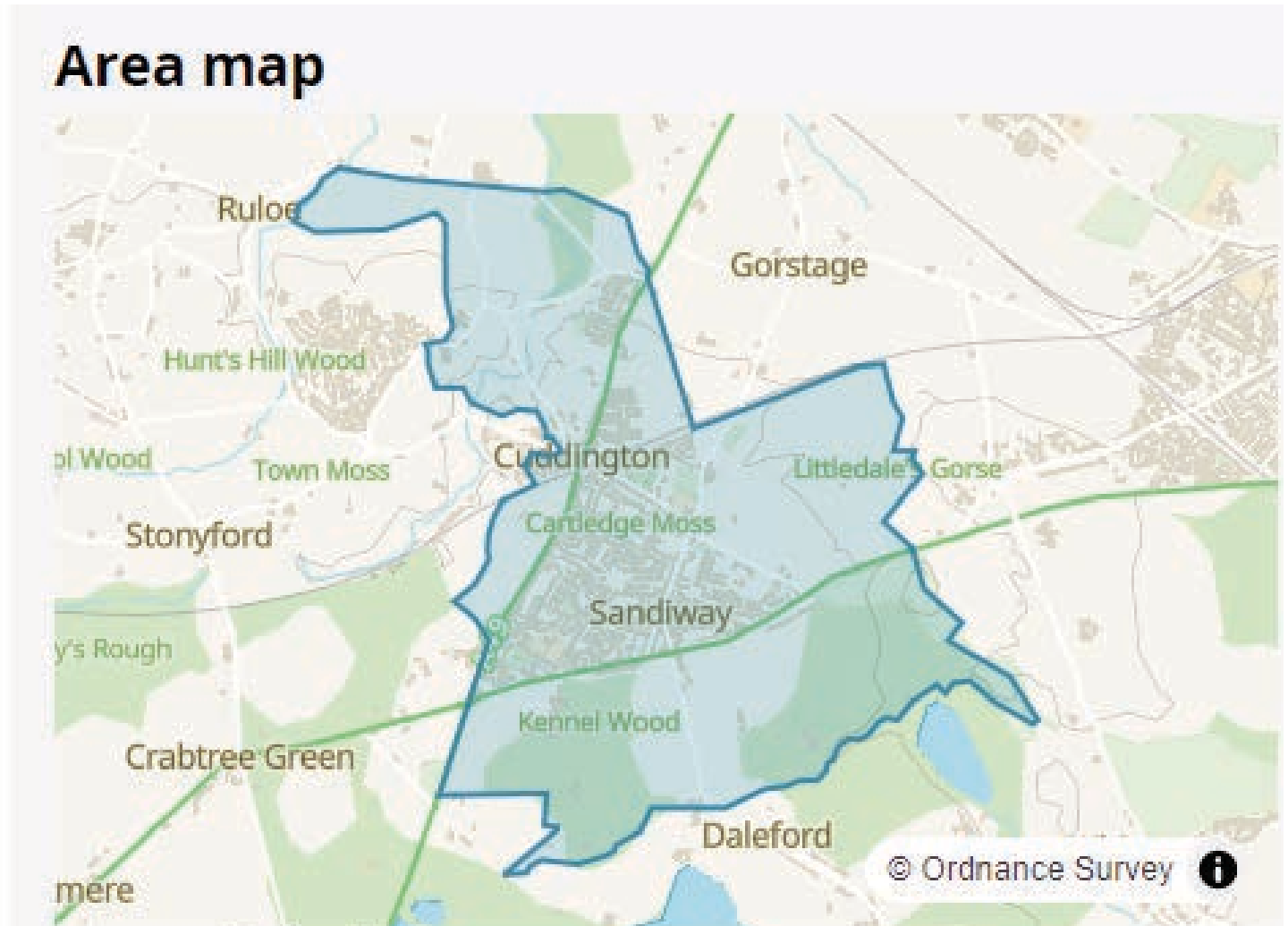
1.1 Cuddington and Sandiway lie centrally within the borough. They are linked to Northwich and Chester via the A556 Chester Road and the A49 which links the settlement to the M56 to the north and Whitchurch to the south. Cuddington also has a railway station on the Mid-Cheshire line between Chester and Manchester.

Map 1.1 Cuddington and Sandiway location



2 Socio-economic profile

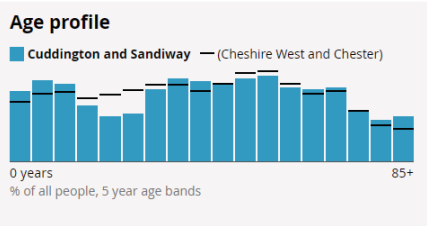
Map 2.1 Cuddington and Sandiway area map



Cuddington and Sandiway: ONS – Custom built area selected. The data and boundaries displayed in this profile are aggregated from small areas on a best-fit basis, and therefore may differ slightly from other sources: <https://www.ons.gov.uk/visualisations/customprofiles/build/>

2 Socio-economic profile

Table 2.1 Cuddington and Sandiway socio-economic profile

Topic	Settlement figure		Borough figure		Settlement share of borough total
Population					
Total existing population (Census 2021, rounded to the nearest 100 people)	5,100		357,200		1.43%
<div>Age Profile</div> <div><p>Age profile</p><p>■ Cuddington and Sandiway — (Cheshire West and Chester)</p><p>0 years % of all people, 5 year age bands 85+</p></div> <div>(Census 2021)</div>	Age	%	Age	%	
	0-4:	5.8	0-4:	4.9	
	5-9:	6.7	5-9:	5.6	
	10-14:	6.4	10-14:	5.7	
	15-19:	4.6	15-19:	5.2	
	20-24:	3.7	20-24:	5.5	
	25-29:	3.9	25-29:	5.9	
	30-34:	5.9	30-34:	6.3	
	35-39:	6.8	35-39:	6.3	
	40-44:	6.6	40-44:	5.8	
	45-49:	6.4	45-49:	6.4	
	50-54:	6.8	50-54:	7.3	
	55-59:	7.0	55-59:	7.4	
	60-64:	6.1	60-64:	6.4	
	65-69:	5.9	65-69:	5.6	
	70-74:	6.1	70-74:	5.8	
	75-79:	4.2	75-79:	4.2	
	80-84:	3.4	80-84:	3.0	
	85+:	3.7	85+:	2.7	
Households					
Number of households	2,100		155,200		1.35%

Socio-economic profile 2

Topic	Settlement figure		Borough figure		Settlement share of borough total
(2021 Census, rounded to the nearest 100 households)					
Household size (2021 Census, percentage of all households)	1 person in household	25.1%	1 person in household	30.2%	N/A
	2 people in household	38.4%	2 people in household	36.4%	
	3 people in household	15.4%	3 people in household	16.1%	
	4 or more people in household	21.1%	4 or more people in household	17.2%	
Household composition (2021 Census, percentage of all households)	One person household	25.2%	One person household	30.2%	N/A
	Single family household	72.5%	Single family household	65.3%	
	Other household types	2.3%	Other household types	4.4%	
Accommodation type (2021 Census, percentage of all households)	Whole house or bungalow	95.1%	Whole house or bungalow	87.4%	N/A
	Flat, maisonette or apartment	4.8%	Flat, maisonette or apartment	11.9%	
	A caravan or other mobile or temporary structure	0.0%	A caravan or other mobile or temporary structure	0.7%	
Number of bedrooms (2021 Census, percentage of all households)	1 bedroom	2.4%	1 bedroom	7.0%	N/A
	2 bedrooms	14.9%	2 bedrooms	23.1%	
	3 bedrooms	38.7%	3 bedrooms	45.7%	
	4 or more bedrooms	43.9%	4 or more bedrooms	24.3%	
Tenure of household (2021 Census, percentage of all households)	Owns outright	43.6%	Owns outright	37.1%	N/A
	Owns with a mortgage or loan or shared ownership	38.9%	Owns with a mortgage or loan or shared ownership	32.4%	

2 Socio-economic profile

Topic	Settlement figure		Borough figure		Settlement share of borough total
	Social rented	9.2%	Social rented	14.6%	
	Private rented or lives rent free	8.3%	Private rented or lives rent free	15.8%	
Employment					
Economic activity status (2021 Census, % of people aged 16 years and over)	Economically active: In employment	56.5%	Economically active: In employment	57.2%	N/A
	Economically active: Unemployed	2.4%	Economically active: Unemployed	2.8%	
	Economically inactive	41.1%	Economically inactive	40.0%	
Employment history (2021 Census, % of people aged 16 years and over not in employment)	Not in employment: Worked in the last 12 months	10.5%	Not in employment: Worked in the last 12 months	12.3%	
	Not in employment: Not worked in the last 12 months	73.6%	Not in employment: Not worked in the last 12 months	67.3%	
	Not in employment: Never worked	15.9%	Not in employment: Never worked	20.5%	
Occupation (2021 Census, % of people aged 16 years and over in employment)	Managers, directors and senior officials	18.5%	Managers, directors and senior officials	14.0%	
	Professional occupations	27.8%	Professional occupations	20.5%	
	Associate professional and technical occupations	15.3%	Associate professional and technical occupations	13.2%	
	Administrative and secretarial occupations	8.7%	Administrative and secretarial occupations	8.9%	

Socio-economic profile 2

Topic	Settlement figure		Borough figure		Settlement share of borough total
	Skilled trades occupations	8.1%	Skilled trades occupations	9.3%	
	Caring, leisure and other service occupations	6.3%	Caring, leisure and other service occupations	8.8%	
	Sales and customer service occupations	5.6%	Sales and customer service occupations	8.2%	
	Process, plant and machine operatives	3.8%	Process, plant and machine operatives	6.9%	
	Elementary occupations	5.9%	Elementary occupations	10.2%	
Travel to work and transport					
Number of cars or vans (2021 Census, % of all households)	No cars or vans in household	7.8%	No cars or vans in household	16.7%	N/A
	1 car or van in household	36.7%	1 car or van in household	40.8%	
	2 cars or vans in household	42.1%	2 cars or vans in household	32.0%	
	3 or more cars or vans in household	13.4%	3 or more cars or vans in household	10.5%	
Distance travelled to work (2021 Census, % of people aged 16 years and over in employment)	Less than 10km	19.7%	Less than 10km	32.7%	N/A
	10km to less than 30km	20.9%	10km to less than 30km	18.6%	
	30km and over	6.6%	30km and over	5.2%	
	Works mainly from home	42.6%	Works mainly from home	31.5%	
	Other	10.2%	Other	12.1%	
Method of travel to workplace (2021 Census, % of people aged 16 years and over in employment)	Work mainly at or from home	42.5%	Work mainly at or from home	31.5%	N/A
	Underground, metro, light rail, tram	0.2%	Underground, metro, light rail, tram	0.1%	

2 Socio-economic profile

Topic	Settlement figure		Borough figure		Settlement share of borough total
	Train	1.1%	Train	0.8%	
	Bus, minibus or coach	0.5%	Bus, minibus or coach	1.7%	
	Taxi	0.2%	Taxi	0.6%	
	Motorcycle, scooter or moped	0.3%	Motorcycle, scooter or moped	0.4%	
	Driving a car or van	48.2%	Driving a car or van	50.8%	
	Passenger in a car or van	2.8%	Passenger in a car or van	3.9%	
	Bicycle	0.9%	Bicycle	2.0%	
	On foot	3.0%	On foot	7.4%	
	Other method of travel to work	0.4%	Other method of travel to work	0.9%	

3 Availability of services and facilities

Cuddington and Sandiway Local Retail Centre (May 2023)

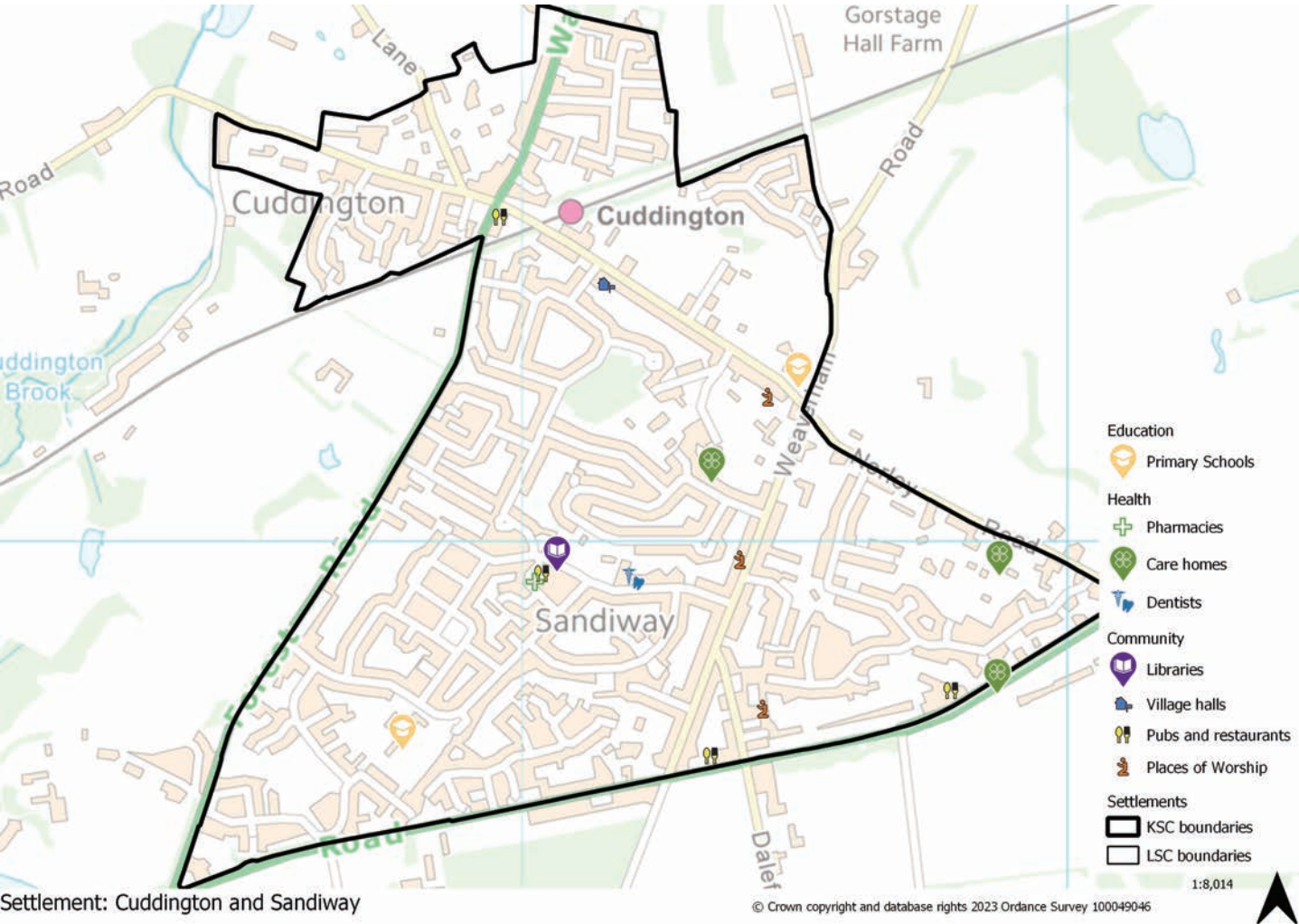
3.1 Mere Lane - this centre is located along Mere Lane and Fir Lane in the middle of Cuddington and Sandiway. This is a purpose built parade of shops and does have parking on the street as well as a small car park. The library and dentist surgery is also located at the centre. As this is in the centre of the residential area, it is accessible for most people to access the units on foot, although the car park is well used. There is a diverse mix of units, with a focus on convenience retail. This is not the only retail centre in the village, however with its location in the centre of the village this centre caters for everyday needs of local people. To the south of the centre is Blakemere craft centre, which has a number of comparison, service and tourism facilities. As the two areas have different roles, Blakemere is not impacting on this Local Retail Centre as it accommodates a different customer.

3.2 Norley Road - located to the north of the Cuddington and Sandiway settlement, this Local Retail Centre is small, although isn't the only retail centre in the village. Whilst the centre is just off the A49, it is unlikely that commuters would stop their car to visit the shops, however there is a train station nearby and other uses such as a community centre, playground, tennis courts, primary school and pub. All these other uses could be combined with linked trips to the centre. There is a small car park to the front of the shops, which is well used and is in easy access for most train commuters. The centre is now dominated by Premier convenience store which has amalgamated three units into one. This is complemented with a bakers and retail services. There are no vacant units at the centre and as the convenience store has long opening hours, this will contribute to the centre feeling busy for longer in the day and evening.

3 Availability of services and facilities

Social and community infrastructure

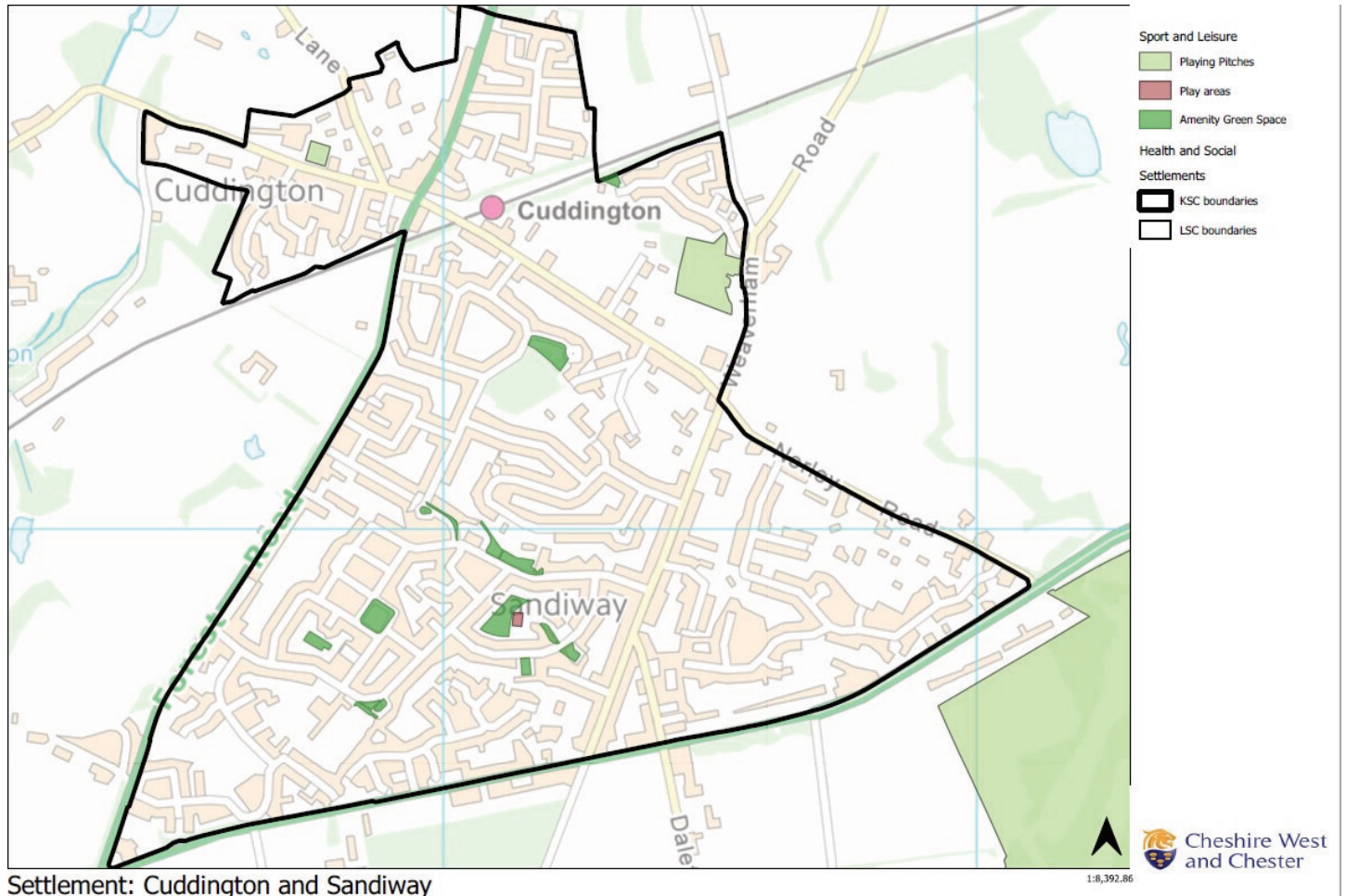
Map 3.1 Cuddington and Sandiway community facilities



Availability of services and facilities 3

Green infrastructure, sport and leisure

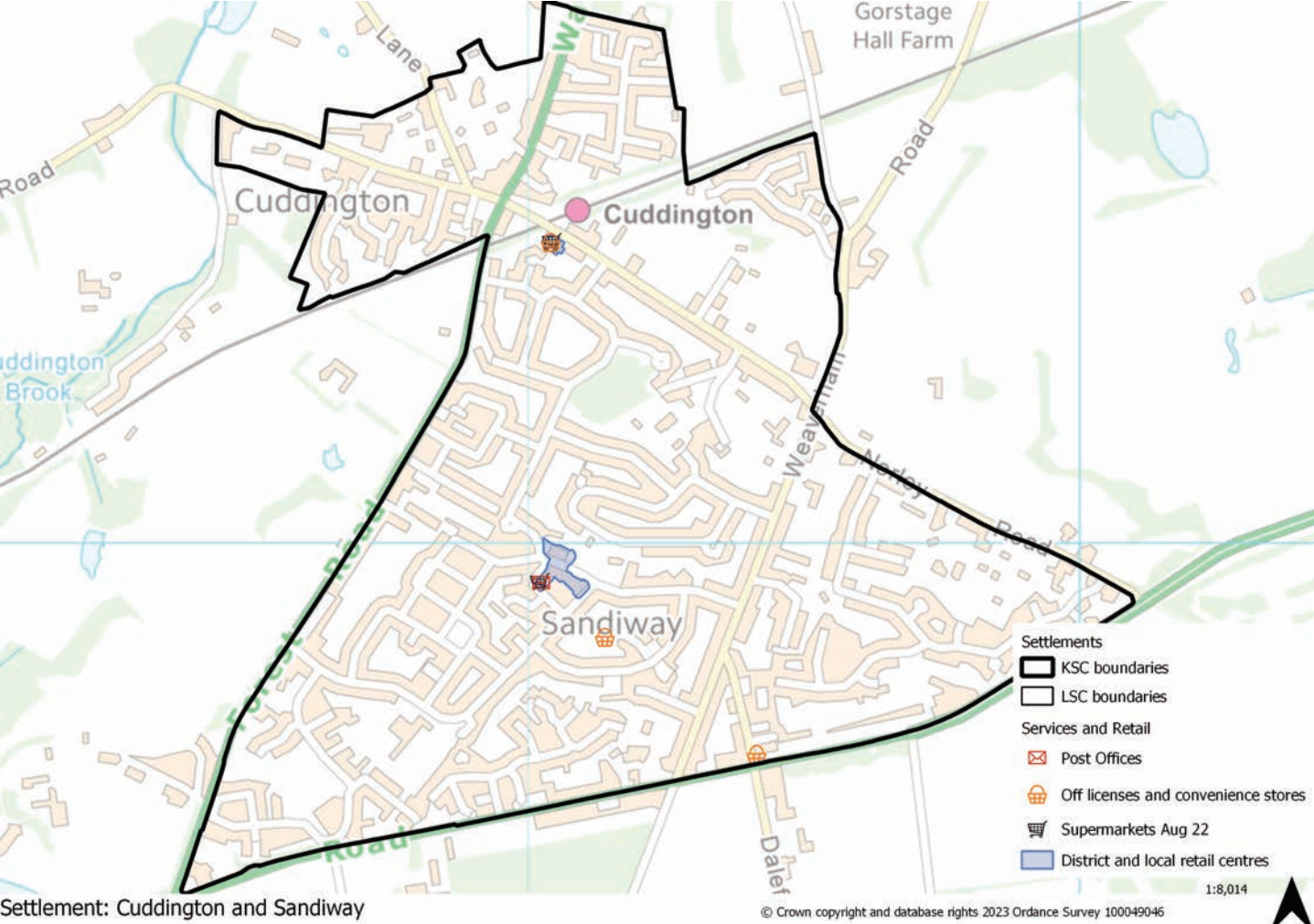
Map 3.2 Cuddington and Sandiway green infrastructure



3 Availability of services and facilities

Local retail and services

Map 3.3 Cuddington and Sandiway retail and services



4 Accessibility / access to public transport

Map 4.1 Cuddington and Sandiway accessibility

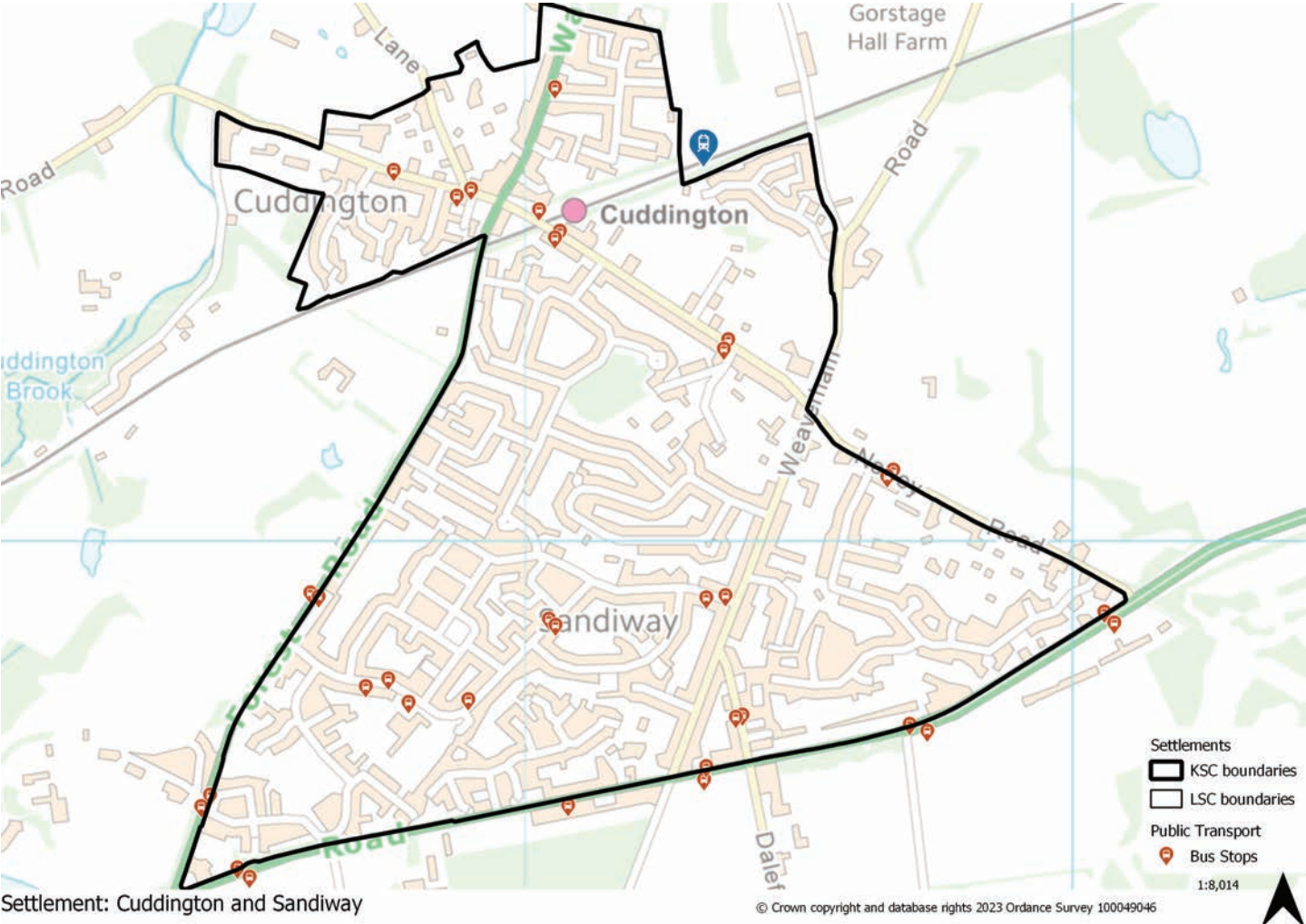


Table 4.1 Distance to other towns/higher order service centres

From Cuddington & Sandiway to:	Distance (approximate miles)	Approximate travel time by bus	Approximate travel time by train	Approximate travel time by bicycle	Approximate travel time by car
Chester	14	42 minutes	21 minutes	1 hour 22 minutes	29 minutes
Ellesmere Port	19	1 hour 56 minutes (no direct service)	1 hour 26 minutes (no direct service)	1 hour 26 minutes	29 minutes
Northwich	5	33 minutes	10 minutes	22 minutes	11 minutes
Winsford	6	1 hour 30 minutes (no direct service)	1 hour (no direct service)	34 minutes	13 minutes

4 Accessibility / access to public transport

From Cuddington & Sandiway to:	Distance (approximate miles)	Approximate travel time by bus	Approximate travel time by train	Approximate travel time by bicycle	Approximate travel time by car
Middlewich	9	1 hour 49 minutes (no direct service)	N/A	59 minutes	17 minutes

Table 4.2 Frequency of trainservices from Cuddington and Sandiway

Main train routes from Cuddington and Sandiway	Days	Frequency
Manchester	Daily	1/1 hour Sunday 1/2 hour
Chester	Daily	1/1 hour Sunday 1/2 hour

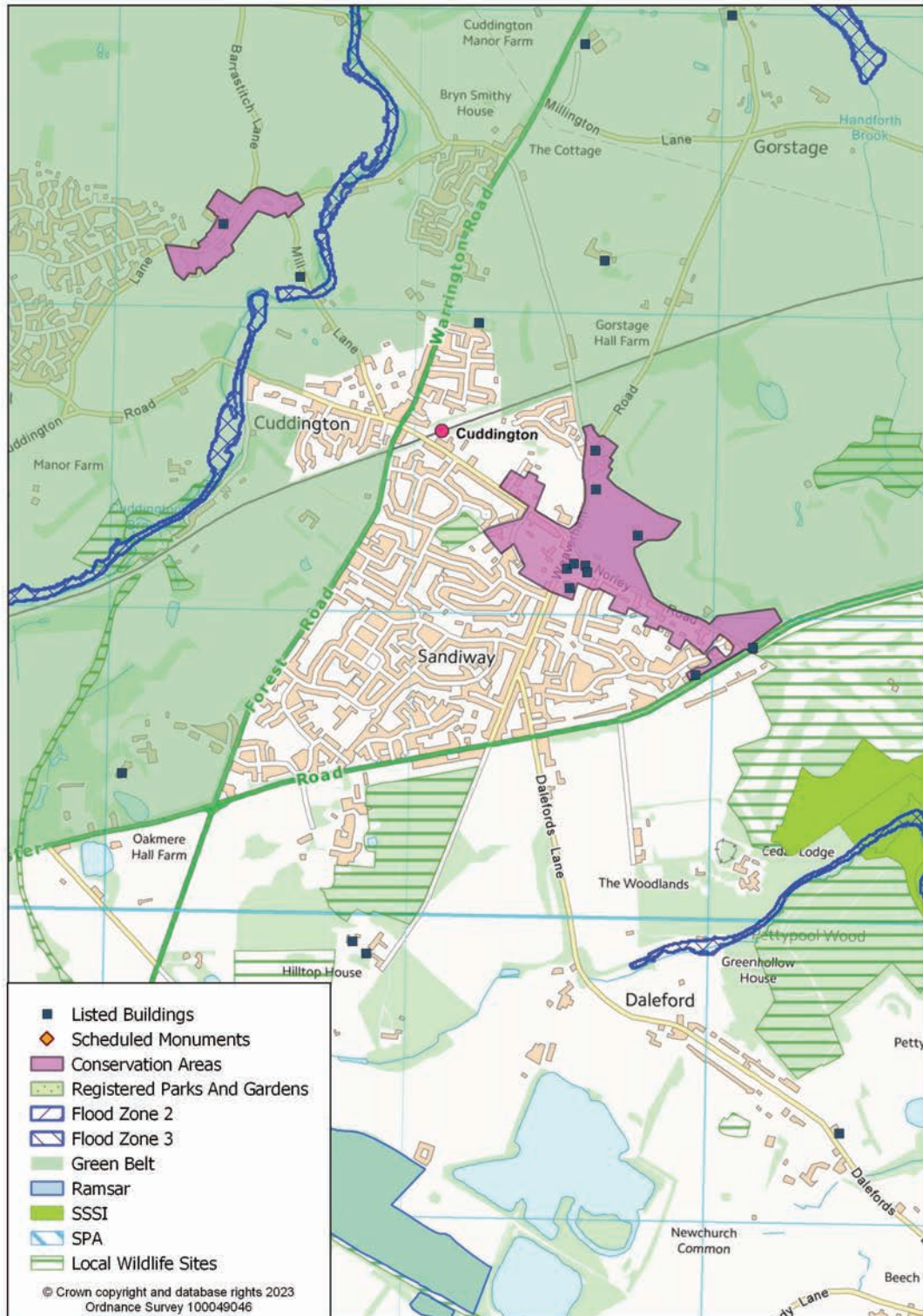
Table 4.3 Frequency of bus services from Cuddington and Sandiway

Bus routes from Cuddington and Sandiway	Days	Frequency
Northwich	Weds	1/2 hour
Frodsham	Weds	1/2 hour
Chester	Mon-Sat	1/1 hour

Constraints - natural / built environment 5

5 Constraints - natural / built environment

Map 5.1 Cuddington and Sandiway constraints



5 Constraints - natural / built environment

Landscape Character

Table 5.1 Landscape character assessment

Landscape Character Type	General Description
Undulating enclosed farmland (Upper and Mid Weaver Valley) - to the north	This character type is defined by undulating topography and the associated small to medium scale enclosure into which it is divided. Key characteristics are the generally cohesive and un-fragmented historic landscape in the south of the borough, small woodlands, ponds and streams, nucleated rural villages and scattered farmsteads. Land use is mainly pasture.
Woodlands, heaths, meres and mosses (Delamere) - to the south	This character type is defined by extensive blocks of woodland (mainly planted coniferous but with some broadleaves), interspersed with relic heath, and meres and mosses formed in glacial hollows. More recent water bodies have been created through the extraction of sand and gravel or the quarrying of sandstone. This is also a partly enclosed character type with large fields (over 8ha) defined by regular, straight hedgerow boundaries which in many places are growing out and in poor condition. The Delamere landscape character area occupies a hollow created during the last glaciation when meltwaters forced their way through the sandstone ridge at the ‘Mouldsworth Gap’ and deposited extensive glacial sand and gravel deposits in the area that is now Delamere Forest.

Cuddington and Sandiway profile summary 6

6 Cuddington and Sandiway profile summary

Socio-economic profile

- This is a relatively small settlement in the borough with only 1.43% share of the population.
- The age profile shows that the highest percentage of residents are between 50 and 59.
- There are 2,100 households in the settlement, mostly 4 or more bedroom houses or bungalows, with the majority being 2 person households owned outright.
- 56.5% of residents are in employment, slightly below the borough figure. The primary occupation of working residents is professional.
- 42.1% of the households have 2 cars or vans which is higher than the borough average.
- 42.6% of residents work from home which is higher than the borough figure and where they do travel to work the main method is by driving a car or van.

Availability of services and facilities

- The settlement has two Local Retail Centres within it, Mere Lane and Norley Road, which together include a diverse mix of retail premises, focusing on convenience retail. There is also a library, dentist, post office, bakery, community centre, playground, tennis courts, primary school and pub.

Social and community infrastructure

- Education – two primary schools.
- Health – dentists, care homes.
- Community, culture and entertainment – Community centre, library, places of worship, pubs and restaurant.

Accessibility / access to public transport

- Cuddington and Sandiway lies centrally within the borough, has close links to Northwich and is easily accessible to Chester and Manchester from Cuddington Railway Station with an hourly direct service.

Employment opportunities

Cuddington and Sandiway employment opportunities

Number of jobs (2021)	Economically active (excluding full-time students)	Economically inactive	Jobs less economically active population	Job density
910	2,431	1,799	-1,521	0.37

Constraints - natural / built environment

- The North Cheshire Green Belt forms a boundary to the north, east and west of the Cuddington and Sandiway settlement area.
- Areas along the route of Cuddington Brook to the north west of the settlement are identified as Flood Zone 2 and 3a (high probability of flooding).
- Within the settlement and the wider area there are also a number of designated built and natural environment features, including the Cuddington and Sandiway conservation areas, a number of

6 Cuddington and Sandiway profile summary

listed buildings, Local Wildlife Sites (including one in the centre of the built-up area of the settlement) and one Site of Special Scientific Interest to the south east of the settlement.