

Places background paper - Kelsall

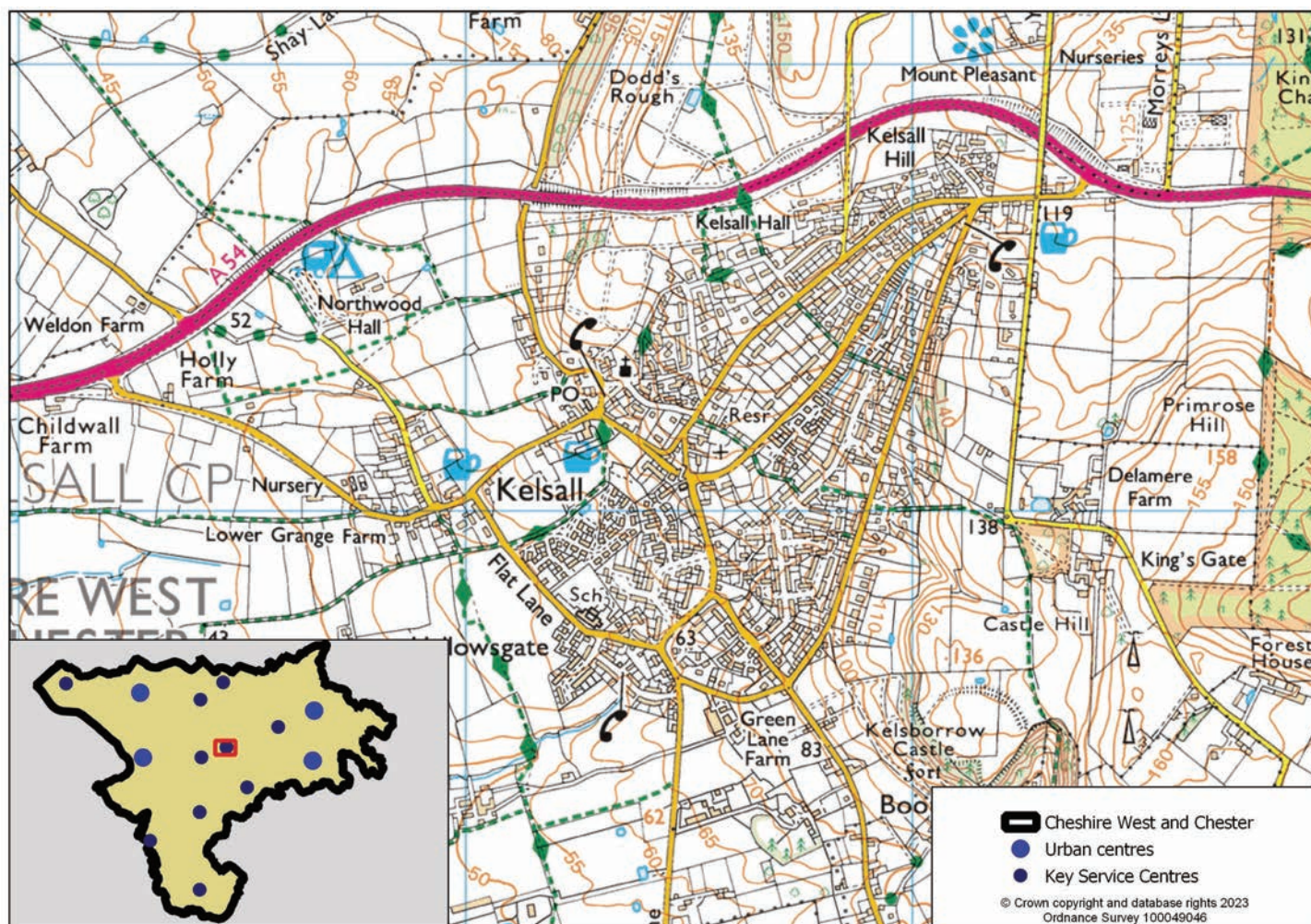
1 Kelsall	2
2 Socio-economic profile	3
3 Availability of services and facilities	9
Social and community infrastructure	9
Green infrastructure, sport and leisure	10
Local retail and services	11
4 Accessibility / access to public transport	12
5 Constraints - natural / built environment	14
6 Kelsall profile summary	16

1 Kelsall

1 Kelsall

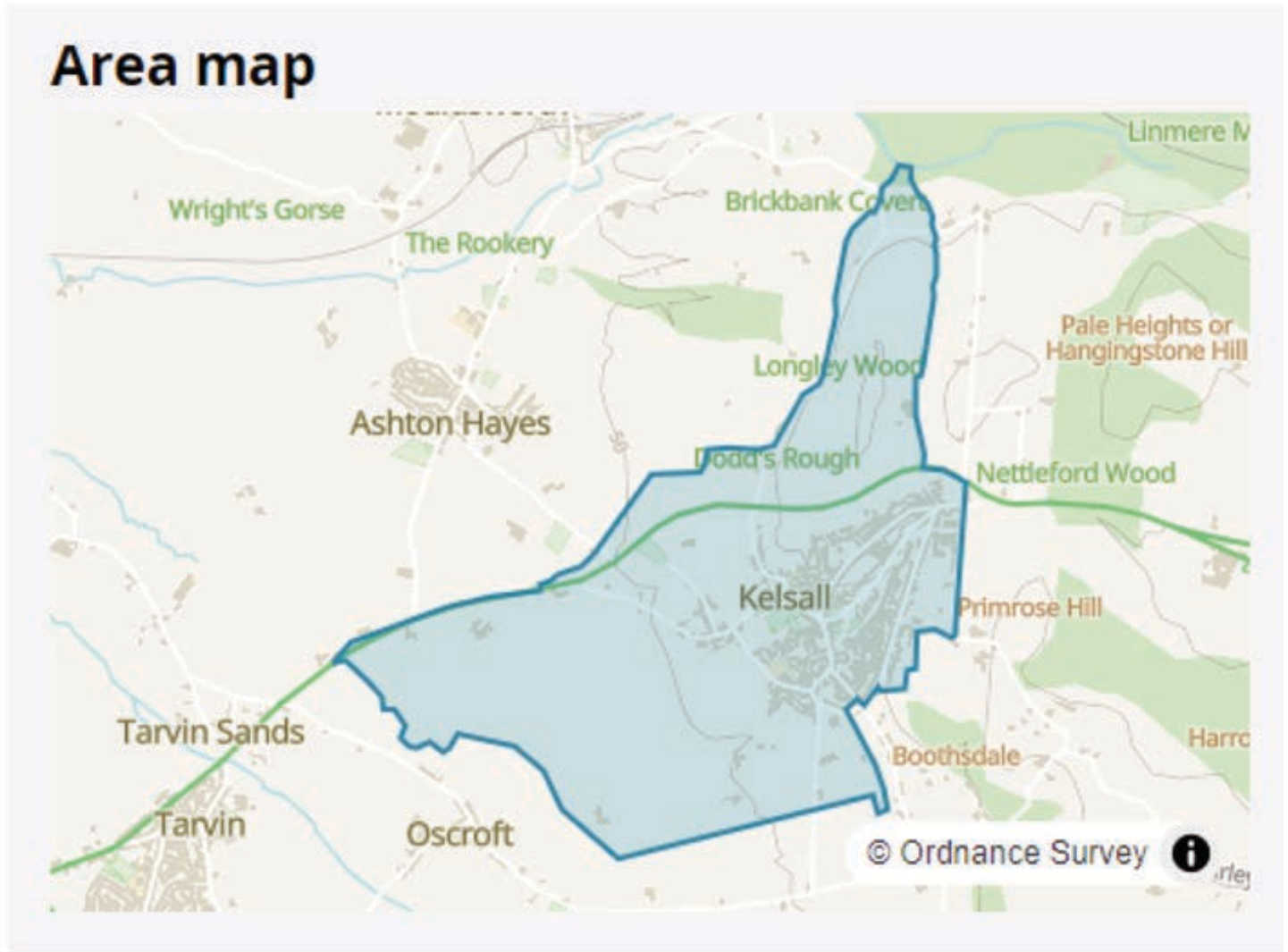
1.1 Kelsall is located in the centre of the borough, edging Delamere Forest to the south west and south of the A54 bypass which links Chester with Northwich and Winsford.

Map 1.1 Kelsall location



2 Socio-economic profile

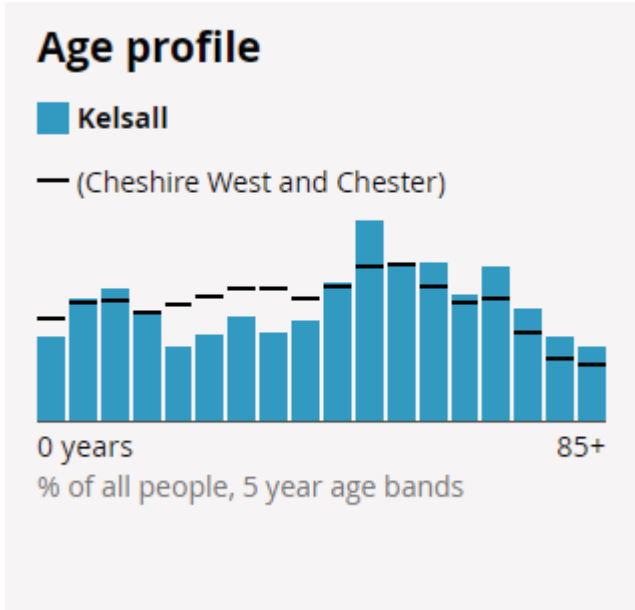
Map 2.1 Kelsall area map



Kelsall: ONS – Built up area. The data and boundaries displayed in this profile are aggregated from small areas on a best-fit basis, and therefore may differ slightly from other sources: <https://www.ons.gov.uk/visualisations/customprofiles/build/>

2 Socio-economic profile

Table 2.1 Kelsall socio-economic profile

Topic	Settlement figure		Borough figure		Settlement share of borough total
Population					
Total existing population (Census 2021, rounded to the nearest 100 people)	3,000		357,200		0.84%
<div>Age Profile</div> <div><p>Age profile</p><p>■ Kelsall</p><p>— (Cheshire West and Chester)</p><p>0 years 85+</p><p>% of all people, 5 year age bands</p><p>(Census 2021)</p></div>	Age	%	Age	%	
	0-4:	4.0	0-4:	4.9	
	5-9:	5.8	5-9:	5.6	
	10-14:	6.3	10-14:	5.7	
	15-19:	5.1	15-19:	5.2	
	20-24:	3.5	20-24:	5.5	
	25-29:	4.1	25-29:	5.9	
	30-34:	4.9	30-34:	6.3	
	35-39:	4.2	35-39:	6.3	
	40-44:	4.8	40-44:	5.8	
	45-49:	6.6	45-49:	6.4	
	50-54:	9.5	50-54:	7.3	
	55-59:	7.3	55-59:	7.4	
	60-64:	7.5	60-64:	6.4	
	65-69:	6.0	65-69:	5.6	
	70-74:	7.3	70-74:	5.8	
	75-79:	5.3	75-79:	4.2	
	80-84:	4.0	80-84:	3.0	
	85+:	3.5	85+:	2.7	
	Households				
Number of households (2021 Census, rounded to the nearest 100 households)	1,200		155,200		0.77%

Socio-economic profile 2

Topic	Settlement figure		Borough figure		Settlement share of borough total
Household size (2021 Census, percentage of all households)	1 person in household	23.3%	1 person in household	30.2%	N/A
	2 people in household	40.6%	2 people in household	36.4%	
	3 people in household	16.7%	3 people in household	16.1%	
	4 or more people in household	19.4%	4 or more people in household	17.2%	
Household composition (2021 Census, percentage of all households)	One person household	23.5%	One person household	30.2%	N/A
	Single family household	74.4%	Single family household	65.3%	
	Other household types	2.2%	Other household types	4.4%	
Accommodation type (2021 Census, percentage of all households)	Whole house or bungalow	97.6%	Whole house or bungalow	87.4%	N/A
	Flat, maisonette or apartment	2.4%	Flat, maisonette or apartment	11.9%	
	A caravan or other mobile or temporary structure	0.0%	A caravan or other mobile or temporary structure	0.7%	
Number of bedrooms (2021 Census, percentage of all households)	1 bedroom	2.5%	1 bedroom	7.0%	N/A
	2 bedrooms	17.2%	2 bedrooms	23.1%	
	3 bedrooms	40.8%	3 bedrooms	45.7%	
	4 or more bedrooms	39.5%	4 or more bedrooms	24.3%	
Tenure of household (2021 Census, percentage of all households)	Owns outright	49.4%	Owns outright	37.1%	N/A
	Owns with a mortgage or loan or shared ownership	37.6%	Owns with a mortgage or loan or shared ownership	32.4%	
	Social rented	5.1%	Social rented	14.6%	

2 Socio-economic profile

Topic	Settlement figure		Borough figure		Settlement share of borough total
	Private rented or lives rent free	7.9%	Private rented or lives rent free	15.8%	
Employment					
Economic activity status (2021 Census, % of people aged 16 years and over)	Economically active: In employment	56.2%	Economically active: In employment	57.2%	N/A
	Economically active: Unemployed	1.8%	Economically active: Unemployed	2.8%	
	Economically inactive	42.0%	Economically inactive	40.0%	
Employment history (2021 Census, % of people aged 16 years and over not in employment)	Not in employment: Worked in the last 12 months	11.0%	Not in employment: Worked in the last 12 months	12.3%	
	Not in employment: Not worked in the last 12 months	72.0%	Not in employment: Not worked in the last 12 months	67.3%	
	Not in employment: Never worked	17.0%	Not in employment: Never worked	20.5%	
Occupation (2021 Census, % of people aged 16 years and over in employment)	Managers, directors and senior officials	20.7%	Managers, directors and senior officials	14.0%	
	Professional occupations	27.2%	Professional occupations	20.5%	
	Associate professional and technical occupations	15.2%	Associate professional and technical occupations	13.2%	
	Administrative and secretarial occupations	6.8%	Administrative and secretarial occupations	8.9%	
	Skilled trades occupations	9.2%	Skilled trades occupations	9.3%	

Socio-economic profile 2

Topic	Settlement figure		Borough figure		Settlement share of borough total
	Caring, leisure and other service occupations	5.9%	Caring, leisure and other service occupations	8.8%	
	Sales and customer service occupations	5.3%	Sales and customer service occupations	8.2%	
	Process, plant and machine operatives	3.7%	Process, plant and machine operatives	6.9%	
	Elementary occupations	5.9%	Elementary occupations	10.2%	
Travel to work and transport					
Number of cars or vans (2021 Census, % of all households)	No cars or vans in household	6.5%	No cars or vans in household	16.7%	N/A
	1 car or van in household	33.2%	1 car or van in household	40.8%	
	2 cars or vans in household	42.7%	2 cars or vans in household	32.0%	
	3 or more cars or vans in household	17.6%	3 or more cars or vans in household	10.5%	
Distance travelled to work (2021 Census, % of people aged 16 years and over in employment)	Less than 10km	12.9%	Less than 10km	32.7%	N/A
	10km to less than 30km	26.7%	10km to less than 30km	18.6%	
	30km and over	5.9%	30km and over	5.2%	
	Works mainly from home	41.0%	Works mainly from home	31.5%	
	Other	13.5%	Other	12.1%	
Method of travel to workplace (2021 Census, % of people aged 16 years and over in employment)	Work mainly at or from home	40.9%	Work mainly at or from home	31.5%	N/A
	Underground, metro, light rail, tram	0.0%	Underground, metro, light rail, tram	0.1%	

2 Socio-economic profile

Topic	Settlement figure		Borough figure		Settlement share of borough total
	Train	0.4%	Train	0.8%	
	Bus, minibus or coach	1.1%	Bus, minibus or coach	1.7%	
	Taxi	0.1%	Taxi	0.6%	
	Motorcycle, scooter or moped	0.3%	Motorcycle, scooter or moped	0.4%	
	Driving a car or van	49.6%	Driving a car or van	50.8%	
	Passenger in a car or van	2.2%	Passenger in a car or van	3.9%	
	Bicycle	0.8%	Bicycle	2.0%	
	On foot	3.5%	On foot	7.4%	
	Other method of travel to work	1.0%	Other method of travel to work	0.9%	

Availability of services and facilities 3

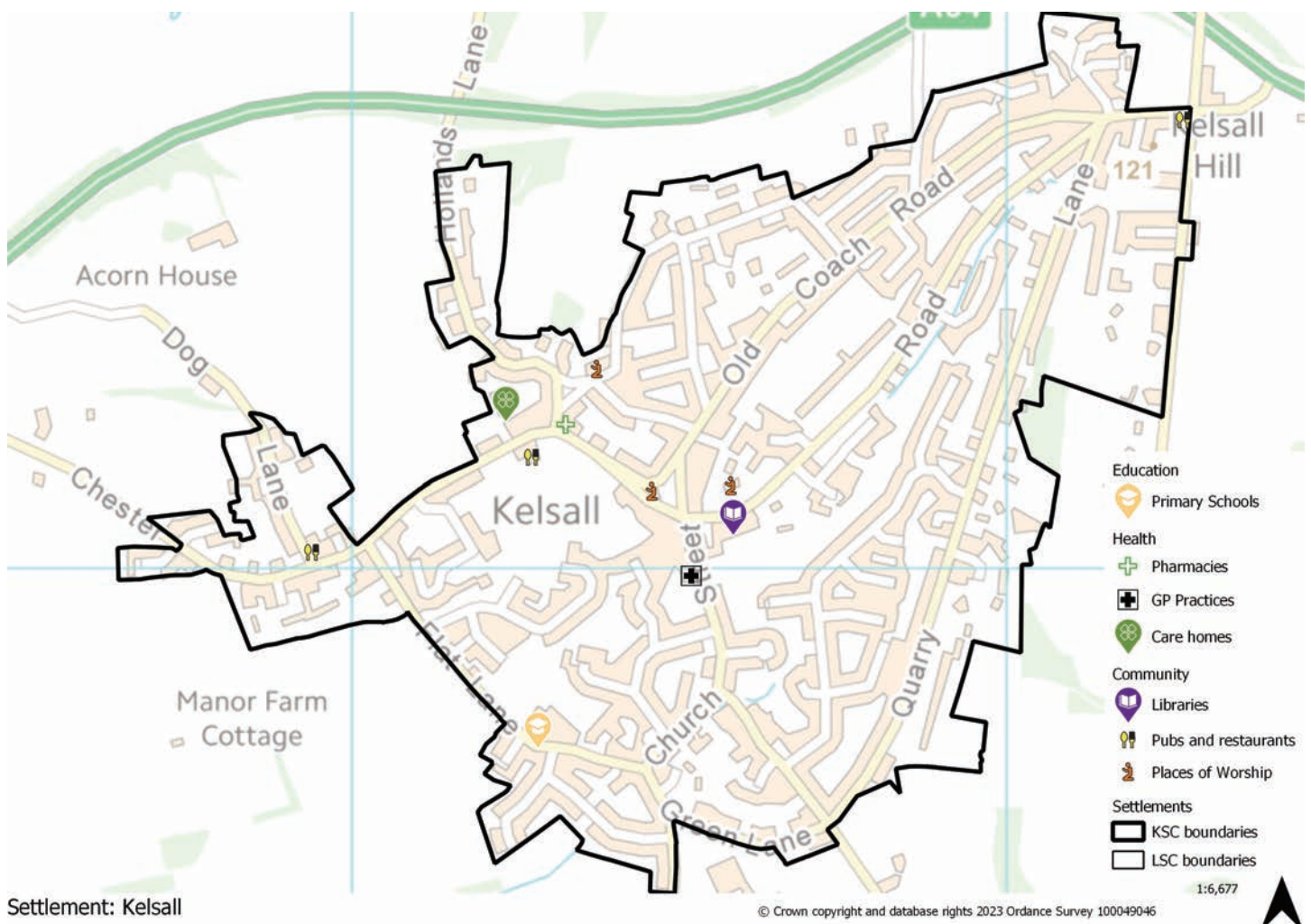
3 Availability of services and facilities

Kelsall Local Retail Centre (May 2023)

3.1 Chester Road - this Local Retail Centre is located in the middle of the village, although slightly to the west and is smaller compared to other villages. The A54 by-pass prevents Kelsall from accommodating commuter traffic through the centre of the village, giving a more rural feeling to the centre. The Co-Op is well used as is the car park at the pub. There is a green space to the south of the Local Retail Centre allowing residents to have a pleasant walk to the facilities. There are a number of facilities within Kelsall, however these are dispersed around the village, such as a doctors, community centre, small parade of shops, primary school and pub. Some areas of Kelsall are elevated, which could prevent some residents accessing the Local Retail Centre on foot. Two of the units had been amalgamated into one which implies they needed more space; however, it does mean even less diversity and there is a vacant unit which is having a big impact on the vacancy of the centre. The Co-Op and Post Office are the main pull to the Local Retail Centre.

Social and community infrastructure

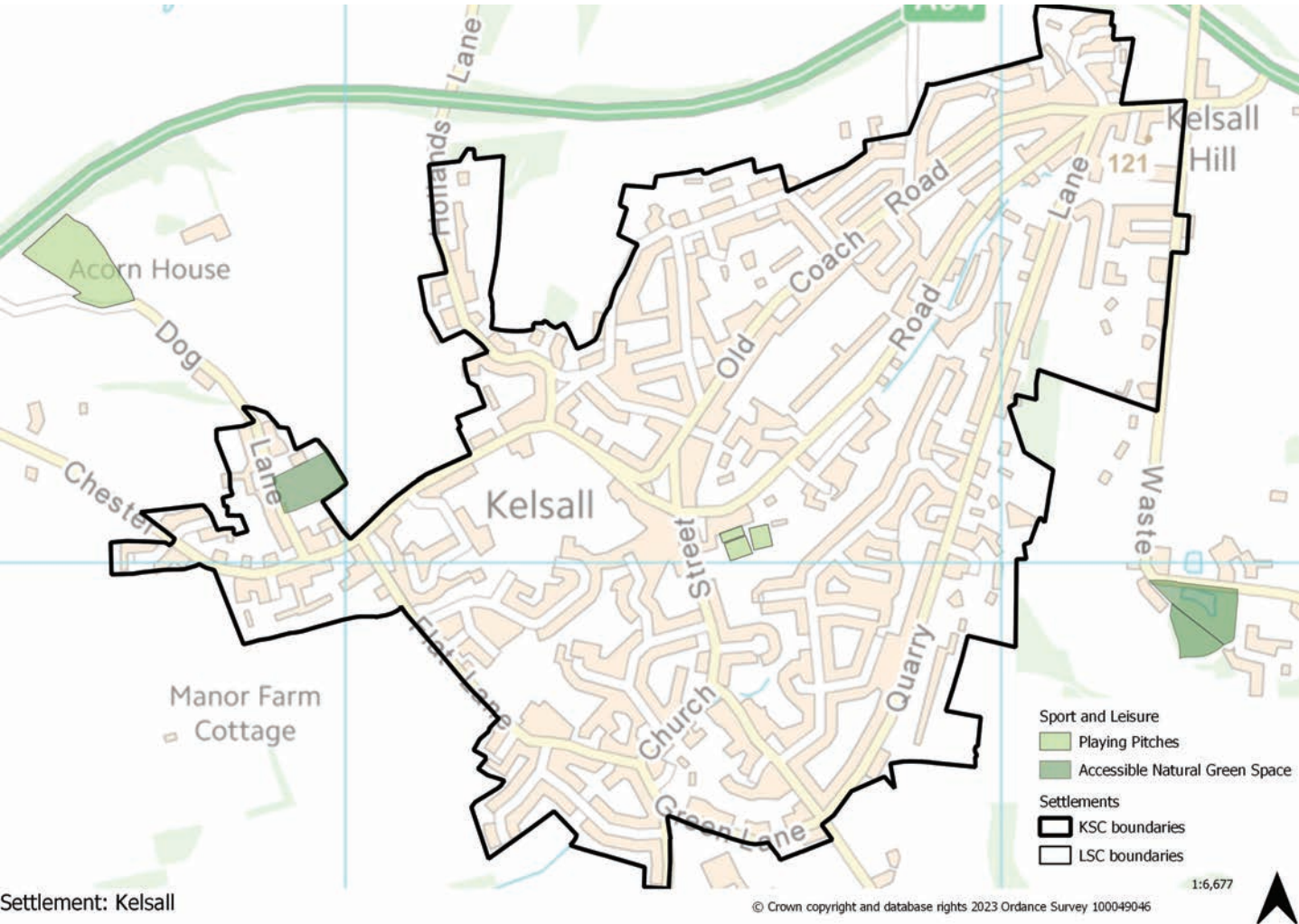
Map 3.1 Kelsall community facilities



3 Availability of services and facilities

Green infrastructure, sport and leisure

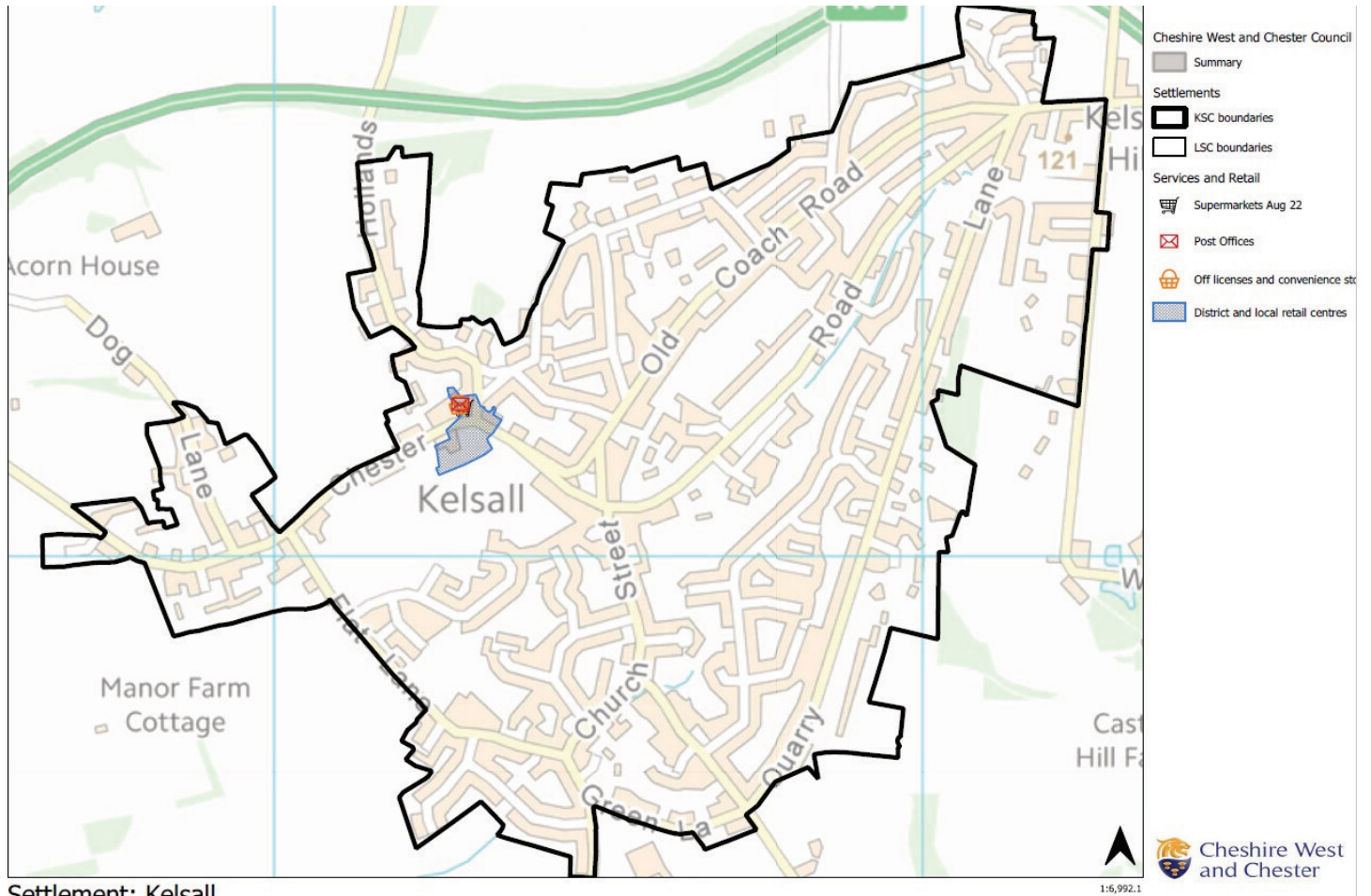
Map 3.2 Kelsall green infrastructure



Availability of services and facilities 3

Local retail and services

Map 3.3 Kelsall retail and services



4 Accessibility / access to public transport

4 Accessibility / access to public transport

Map 4.1 Kelsall accessibility

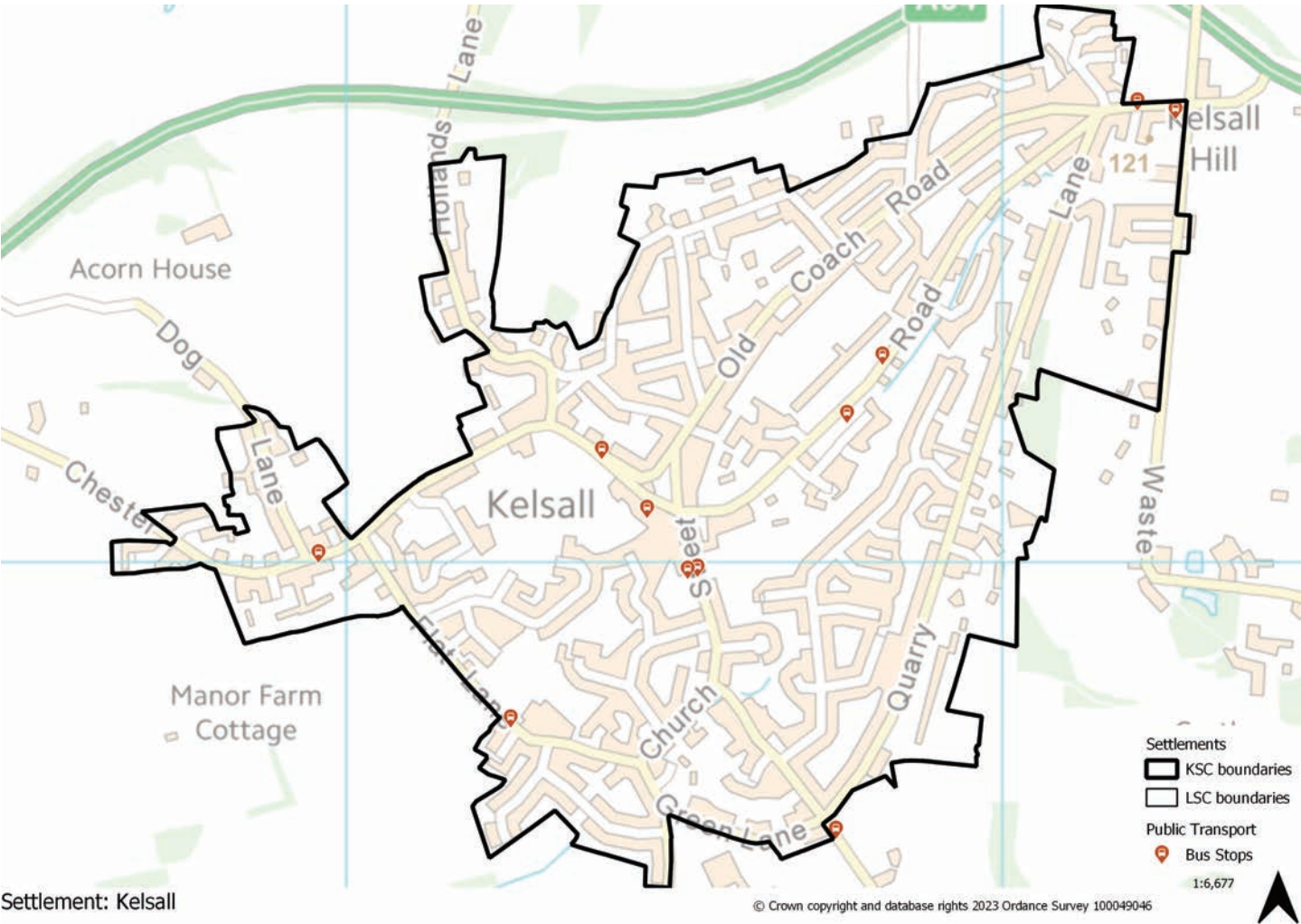


Table 4.1 Distance to other towns/higher order service centres

From Kelsall to:	Distance (approximate miles)	Approximate travel time by bus	Approximate travel time by train	Approximate travel time by bicycle	Approximate travel time by car
Chester	10	31 minutes	N/A	46 minutes	24 minutes
Ellesmere Port	15	1 hour 17 minutes (no direct service)	N/A	1 hour 6 minutes	23 minutes
Northwich	9	36 minutes	N/A	56 minutes	19 minutes
Winsford	9	1 hour 18 minutes (no direct service)	N/A	57 minutes	17 minutes

Accessibility / access to public transport 4

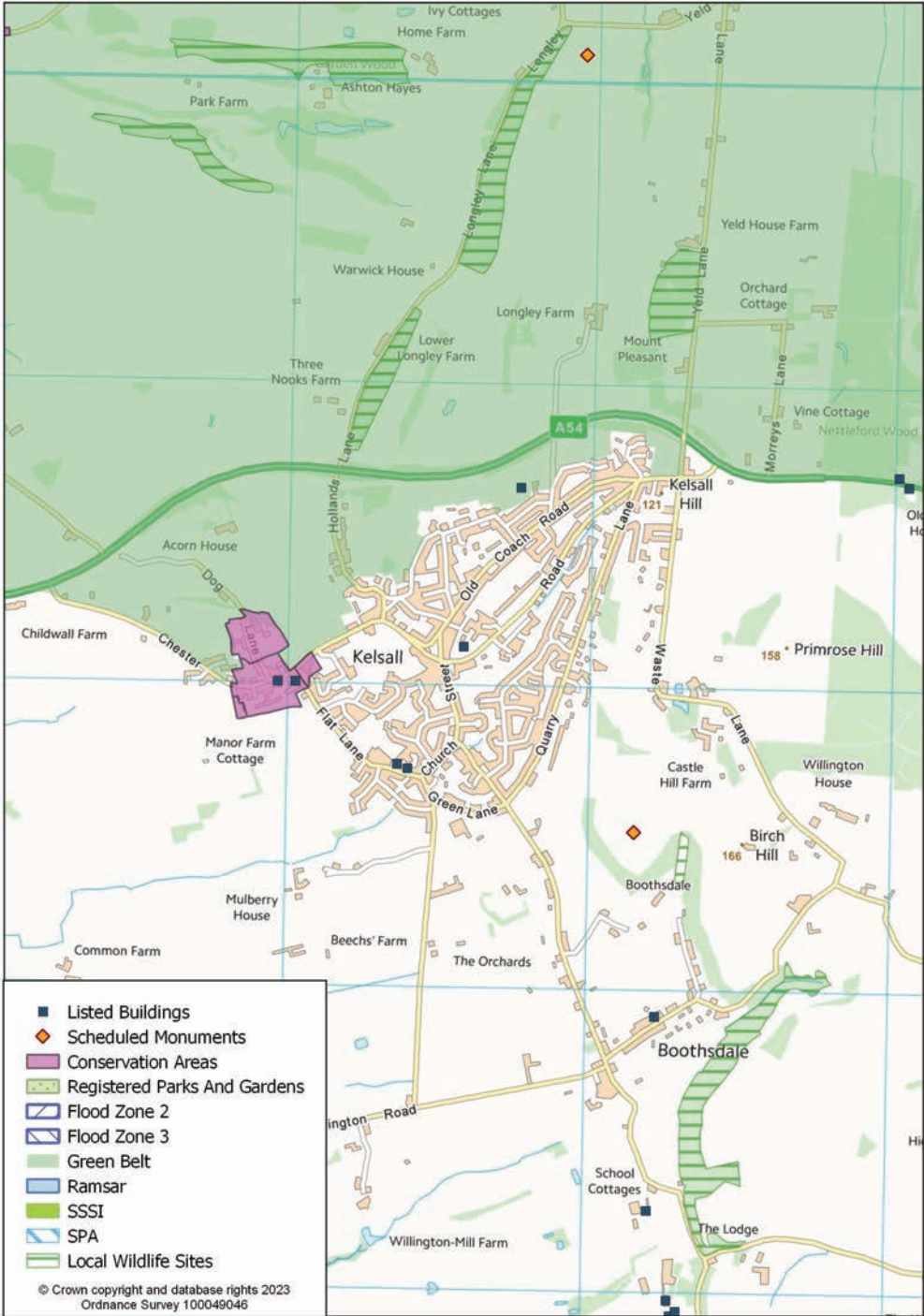
Table 4.2 Frequency of bus services from Kelsall

Bus routes from Kelsall	Days	Frequency
Chester	Mon-Sat	1/1 hour
Northwich	Mon-Sat	1/1 hour

5 Constraints - natural / built environment

5 Constraints - natural / built environment

Map 5.1 Kelsall constraints



Constraints - natural / built environment 5

Landscape Character

Table 5.1 Landscape character assessment

Landscape Character Type	General Description
Sandstone Ridge (Eddisbury)	The Eddisbury Sandstone Ridge is a prominent ridge that extends from Eddisbury Lodge in the north to Tarporley in the south, as a continuation southwards of the Frodsham Sandstone Ridge. The boundaries are defined primarily by geology and topography. The Sandstone Ridge stands prominently above the surrounding Plain and is visually one of the most distinctive landmarks in the Cheshire West and Chester landscape.
Sandstone fringe (Helsby to Tarporley)	The Helsby to Tarporley Sandstone Fringe wraps around the western edge of the Sandstone Ridge from Helsby in the north to Tarporley in the south, forming a transitional landscape between the Sandstone Ridge and the Cheshire Plain West. This Sandstone Fringe landscape is defined by its sandstone geology and intermediate topography and continues to the south.

6 Kelsall profile summary

6 Kelsall profile summary

Socio-economic profile

- Kelsall is one of the smaller settlements of the borough with a 0.84% share of the borough’s population.
- The age profile shows that the highest percentage of residents are between 50 and 54.
- There are 1,200 households in the settlement, mostly 3 bedroom houses or bungalows, with the majority being 2 person households owned outright.
- 56.2% of residents are in employment, slightly below the borough figure. The primary occupation of working residents is professional.
- 42.7% of the households have 2 cars or vans which is higher than the borough average.
- 40.9% of residents work from home which is higher than the borough figure and where they do travel to work the main method is by driving a car or van.

Availability of services and facilities

- Kelsall Local Retail Centre is located in the middle of the village and includes a Co-Op which is well used. There are a number of facilities within Kelsall, however these are dispersed around the village, such as a doctors, community centre, small parade of shops, primary school and pub.

Social and community infrastructure

- Education – 1 primary school.
- Health – GP practice, pharmacy and care home.
- Community, culture and entertainment – Library, Places of Worship and pub and restaurant.

Accessibility / access to public transport

- The A54 by-passes Kelsall to the north providing quick access to routes between Chester, Winsford and Northwich. Hourly bus services are available to and from Chester via Tarvin and to and from Northwich via Sandiway. Kelsall is not on the rail network.

Employment opportunities

Table 6.1 Kelsall employment opportunities

Number of jobs (2021)	Economically active (excluding full-time students)	Economically inactive	Jobs less economically active population	Job density
785	1,825	1,425	-1,040	0.43

Constraints - natural / built environment

- Kelsall is bounded to the north by the North Cheshire Green Belt.
- Within the settlement and the wider area there are a number of designated built environment features, including the Kelsall Conservation Area, and a number of Listed Buildings and one Scheduled Monument.