

Places background paper - Neston and Parkgate

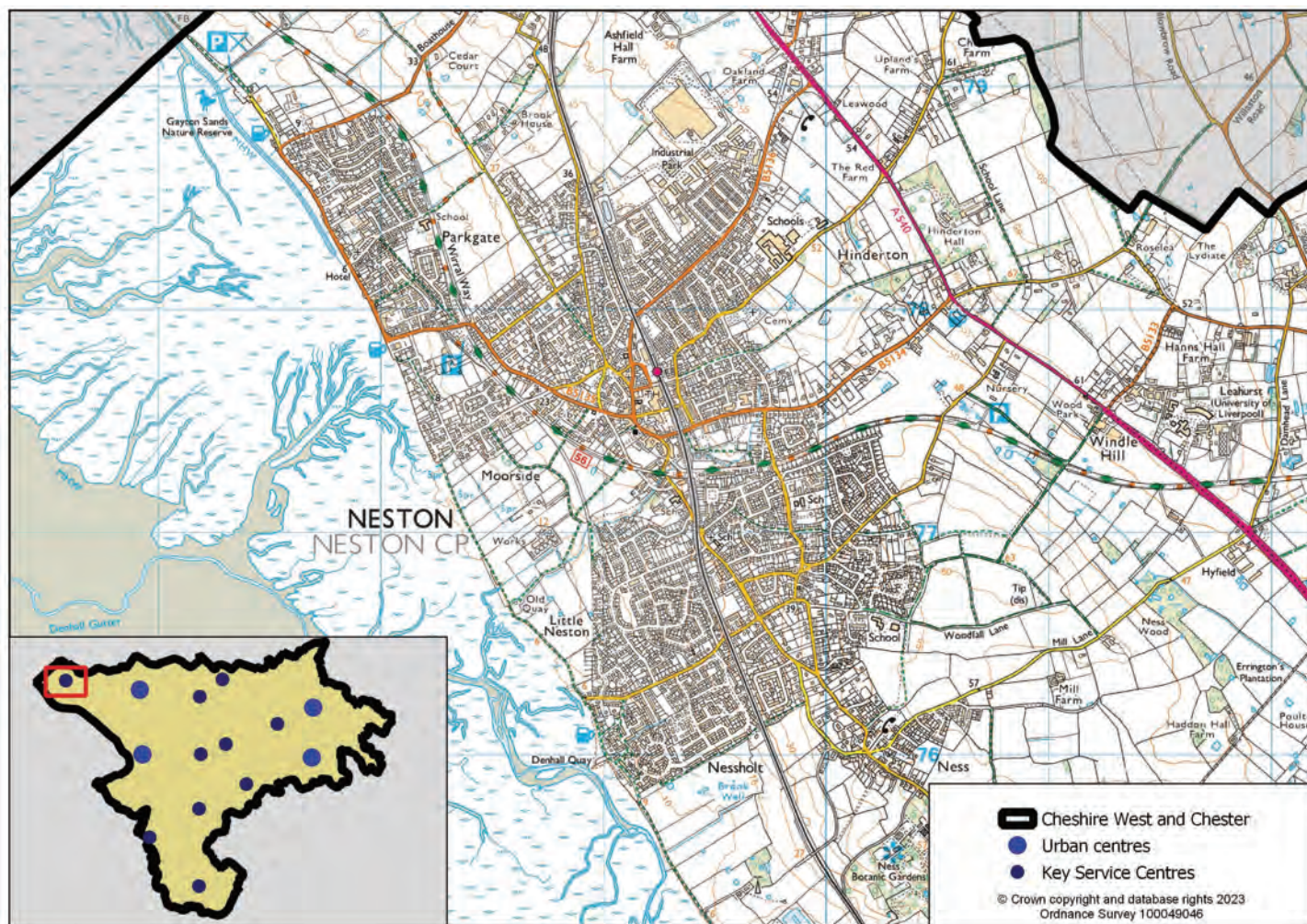
1 Neston and Parkgate	2
2 Socio-economic profile	3
3 Availability of services and facilities	9
Social and community infrastructure	10
Green infrastructure, sport and leisure	11
Local retail and services	12
4 Accessibility / access to public transport	13
5 Employment opportunities	15
6 Constraints - natural / built environment	16
7 Neston and Parkgate profile summary	18

1 Neston and Parkgate

1 Neston and Parkgate

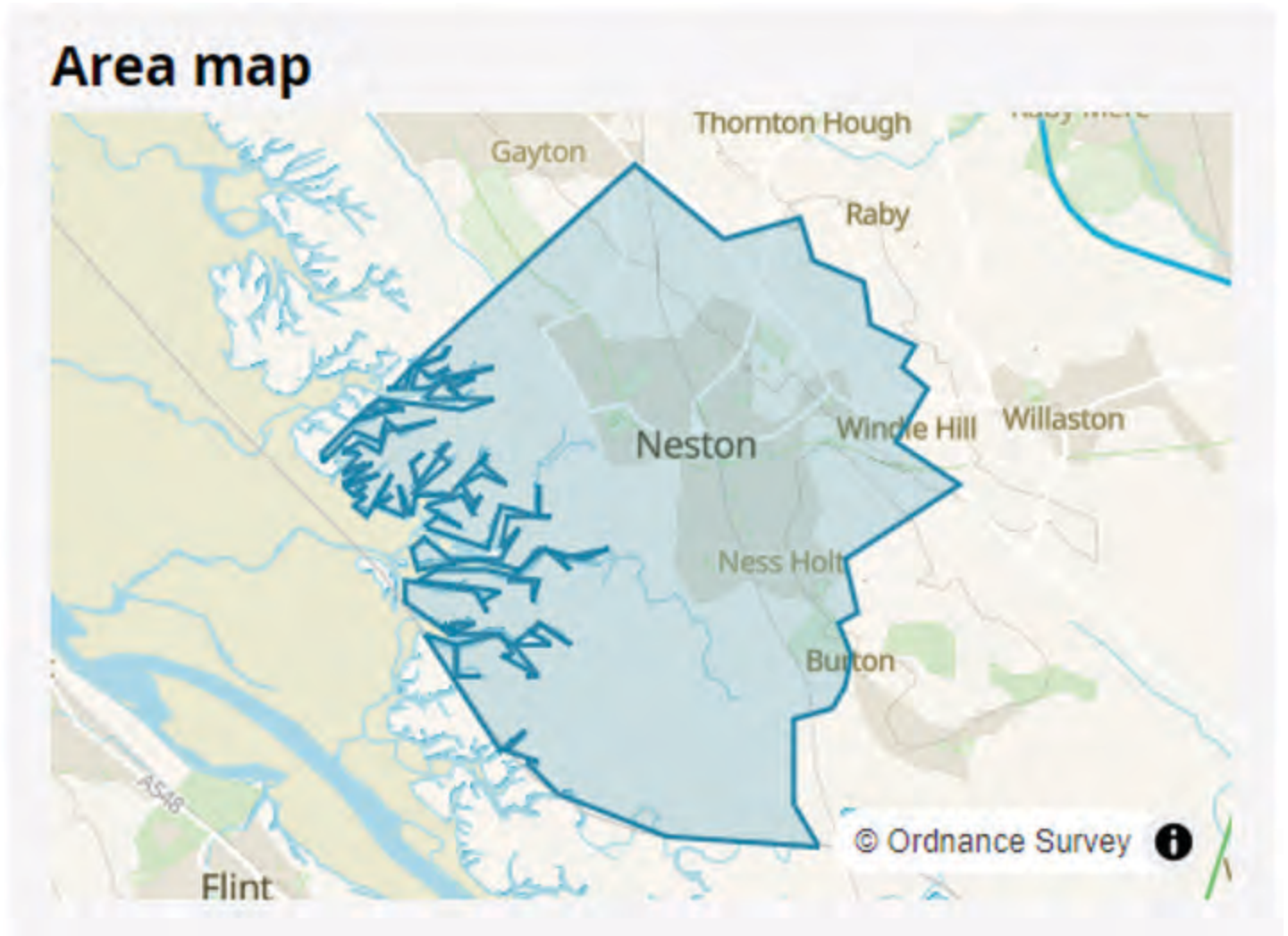
1.1 Neston and Parkgate are located in the north west of the borough on the Dee Estuary.

Map 1.1 Neston and Parkgate location



2 Socio-economic profile

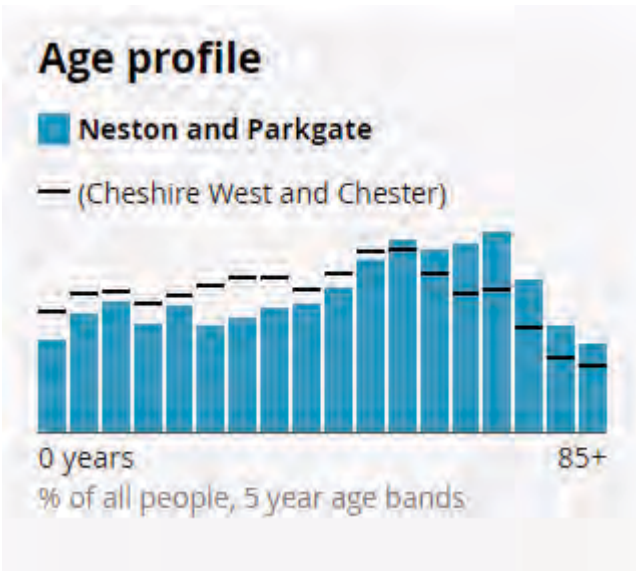
Map 2.1 Neston area map



Neston and Parkgate: ONS – Parish area. The data and boundaries displayed in this profile are aggregated from small areas on a best-fit basis, and therefore may differ slightly from other sources: <https://www.ons.gov.uk/visualisations/customprofiles/build/>

2 Socio-economic profile

Table 2.1 Neston and Parkgate socio-economic profile

Topic	Settlement figure		Borough figure		Settlement share of borough total
Population					
Total existing population (Census 2021, rounded to the nearest 100 people)	15,400		357,200		4.31%
<div>Age Profile</div> <div></div> <div>(Census 2021)</div>	Age	%	Age	%	
	0-4:	3.7	0-4:	4.9	
	5-9:	4.8	5-9:	5.6	
	10-14:	5.3	10-14:	5.7	
	15-19:	4.4	15-19:	5.2	
	20-24:	5.1	20-24:	5.5	
	25-29:	4.3	25-29:	5.9	
	30-34:	4.6	30-34:	6.3	
	35-39:	5.0	35-39:	6.3	
	40-44:	5.2	40-44:	5.8	
	45-49:	5.8	45-49:	6.4	
	50-54:	7.0	50-54:	7.3	
	55-59:	7.8	55-59:	7.4	
	60-64:	7.4	60-64:	6.4	
	65-69:	7.6	65-69:	5.6	
	70-74:	8.1	70-74:	5.8	
	75-79:	6.2	75-79:	4.2	
	80-84:	4.3	80-84:	3.0	
	85+:	3.6	85+:	2.7	
Households					
Number of households (2021 Census, rounded to the nearest 100 households)	7,000		155,200		4.51%

Socio-economic profile 2

Topic	Settlement figure		Borough figure		Settlement share of borough total
Household size (2021 Census, percentage of all households)	1 person in household	31.4%	1 person in household	30.2%	N/A
	2 people in household	39.2%	2 people in household	36.4%	
	3 people in household	14.2%	3 people in household	16.1%	
	4 or more people in household	15.2%	4 or more people in household	17.2%	
Household composition (2021 Census, percentage of all households)	One person household	31.3%	One person household	30.2%	N/A
	Single family household	64.4%	Single family household	65.3%	
	Other household types	4.3%	Other household types	4.4%	
Accommodation type (2021 Census, percentage of all households)	Whole house or bungalow	89.1%	Whole house or bungalow	87.4%	N/A
	Flat, maisonette or apartment	10.6%	Flat, maisonette or apartment	11.9%	
	A caravan or other mobile or temporary structure	0.2%	A caravan or other mobile or temporary structure	0.7%	
Number of bedrooms (2021 Census, percentage of all households)	1 bedroom	6.4%	1 bedroom	7.0%	N/A
	2 bedrooms	21.8%	2 bedrooms	23.1%	
	3 bedrooms	44.9%	3 bedrooms	45.7%	
	4 or more bedrooms	26.9%	4 or more bedrooms	24.3%	
Tenure of household (2021 Census, percentage of all households)	Owns outright	46.9%	Owns outright	37.1%	N/A
	Owns with a mortgage or loan or shared ownership	28.3%	Owns with a mortgage or loan or shared ownership	32.4%	
	Social rented	12.8%	Social rented	14.6%	

2 Socio-economic profile

Topic	Settlement figure		Borough figure		Settlement share of borough total
	Private rented or lives rent free	12.0%	Private rented or lives rent free	15.8%	
Employment					
Economic activity status (2021 Census, % of people aged 16 years and over)	Economically active: In employment	49.4%	Economically active: In employment	57.2%	N/A
	Economically active: Unemployed	2.3%	Economically active: Unemployed	2.8%	
	Economically inactive	48.2%	Economically inactive	40.0%	
Employment history (2021 Census, % of people aged 16 years and over not in employment)	Not in employment: Worked in the last 12 months	9.9%	Not in employment: Worked in the last 12 months	12.3%	
	Not in employment: Not worked in the last 12 months	72.8%	Not in employment: Not worked in the last 12 months	67.3%	
	Not in employment: Never worked	17.3%	Not in employment: Never worked	20.5%	
Occupation (2021 Census, % of people aged 16 years and over in employment)	Managers, directors and senior officials	15.4%	Managers, directors and senior officials	14.0%	
	Professional occupations	23.9%	Professional occupations	20.5%	
	Associate professional and technical occupations	13.3%	Associate professional and technical occupations	13.2%	
	Administrative and secretarial occupations	8.8%	Administrative and secretarial occupations	8.9%	
	Skilled trades occupations	9.8%	Skilled trades occupations	9.3%	

Socio-economic profile 2

Topic	Settlement figure		Borough figure		Settlement share of borough total
	Caring, leisure and other service occupations	8.3%	Caring, leisure and other service occupations	8.8%	
	Sales and customer service occupations	6.8%	Sales and customer service occupations	8.2%	
	Process, plant and machine operatives	5.1%	Process, plant and machine operatives	6.9%	
	Elementary occupations	8.6%	Elementary occupations	10.2%	
Travel to work and transport					
Number of cars or vans (2021 Census, % of all households)	No cars or vans in household	13.6%	No cars or vans in household	16.7%	N/A
	1 car or van in household	40.4%	1 car or van in household	40.8%	
	2 cars or vans in household	33.9%	2 cars or vans in household	32.0%	
	3 or more cars or vans in household	12.1%	3 or more cars or vans in household	10.5%	
Distance travelled to work (2021 Census, % of people aged 16 years and over in employment)	Less than 10km	26.3%	Less than 10km	32.7%	N/A
	10km to less than 30km	23.2%	10km to less than 30km	18.6%	
	30km and over	6.1%	30km and over	5.2%	
	Works mainly from home	31.9%	Works mainly from home	31.5%	
	Other	12.5%	Other	12.1%	
Method of travel to workplace (2021 Census, % of people aged 16 years and over in employment)	Work mainly at or from home	31.9%	Work mainly at or from home	31.5%	N/A
	Underground, metro, light rail, tram	0.1%	Underground, metro, light rail, tram	0.1%	

2 Socio-economic profile

Topic	Settlement figure		Borough figure		Settlement share of borough total
	Train	0.7%	Train	0.8%	
	Bus, minibus or coach	1.4%	Bus, minibus or coach	1.7%	
	Taxi	0.5%	Taxi	0.6%	
	Motorcycle, scooter or moped	0.4%	Motorcycle, scooter or moped	0.4%	
	Driving a car or van	53.8%	Driving a car or van	50.8%	
	Passenger in a car or van	3.3%	Passenger in a car or van	3.9%	
	Bicycle	1.6%	Bicycle	2.0%	
	On foot	5.6%	On foot	7.4%	
	Other method of travel to work	0.9%	Other method of travel to work	0.9%	

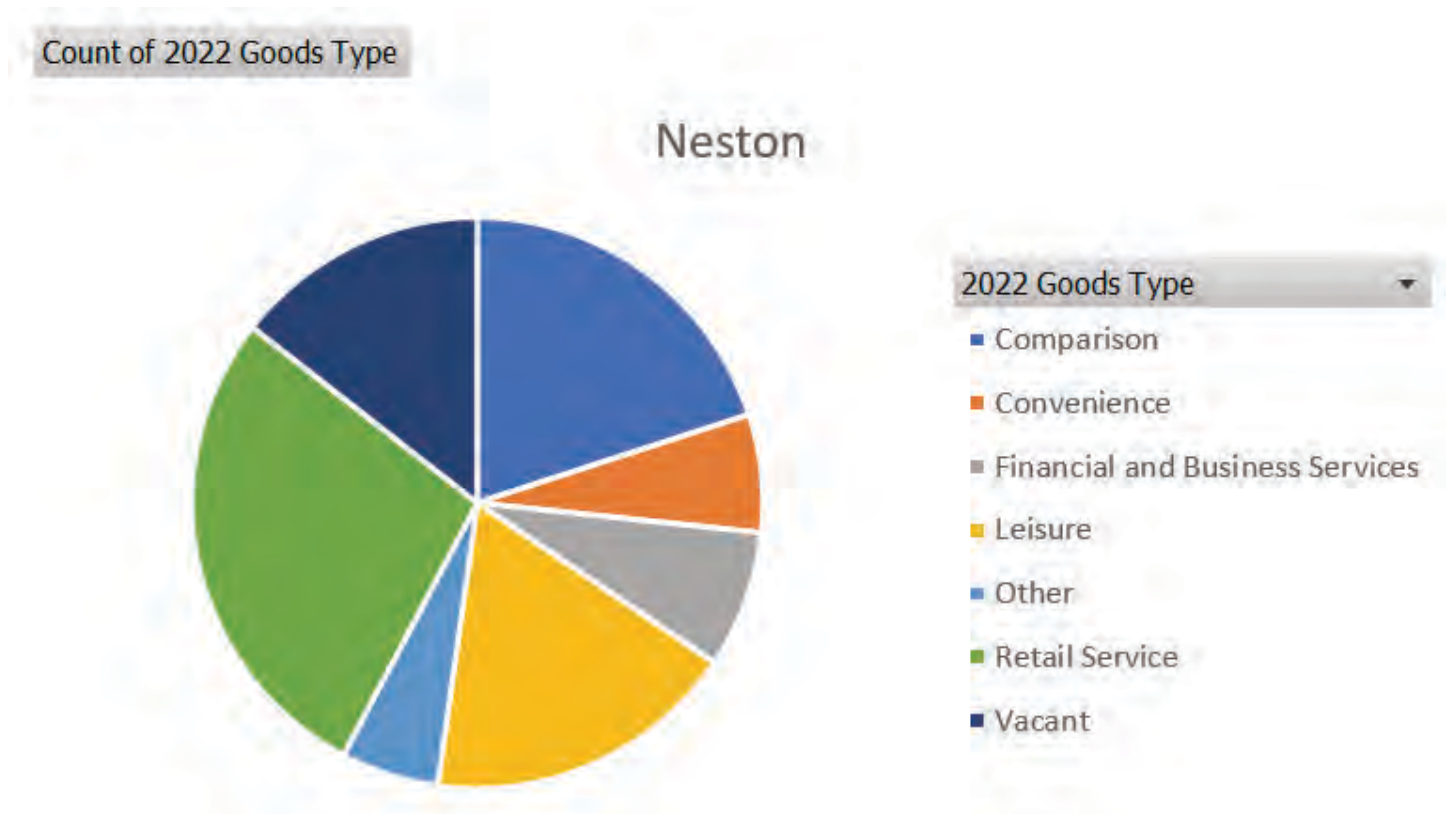
3 Availability of services and facilities

Town Centre Retail

Neston is identified as a town centre for retail policy. The centre is 3.5km from the border with Wirral and 1.4km from the visitor destination Parkgate. The centre has easy access to the Wirral Way, a path that links West Kirby to Hooton. Within the town centre is a train station that has regular trains to Wrexham, North Wales and Birkenhead in the Wirral. The centre is 1.6km from the A540 which runs along the western side of the Wirral and links to the M56 to Manchester or A55 to North Wales. Parking is free in the centre and is mainly based within car parks. Brook Street accommodates a number of buses to Liverpool, Chester and Ellesmere Port. Whilst the centre is well connected, it is more likely that local residents use the centre and travel to other destinations in the Wirral, Chester and North Wales. Neston is the smallest town centre in the borough and traditionally catered for convenience needs. The centre however been evolving and in recent years has developed a strong food and drink sector allowing people to dwell longer in the town centre. There is a popular market on the town square, behind the town hall and in front of Sainsburys. The vacancy rate has improved in recent years but is yet to return to the pre-pandemic levels. Brook Street has always suffered with high long term vacant units along with a few along Chester Road.

3.1 Local Retail Centres in the borough have been surveyed (Spring/Summer 2023) to ascertain the 'health' of the centres in terms of vacancy rates compared to the previous year. The retail offer in each settlement and a breakdown of the commercial goods type (2022) is provided in the graph below (e.g. comparison, convenience, leisure uses).

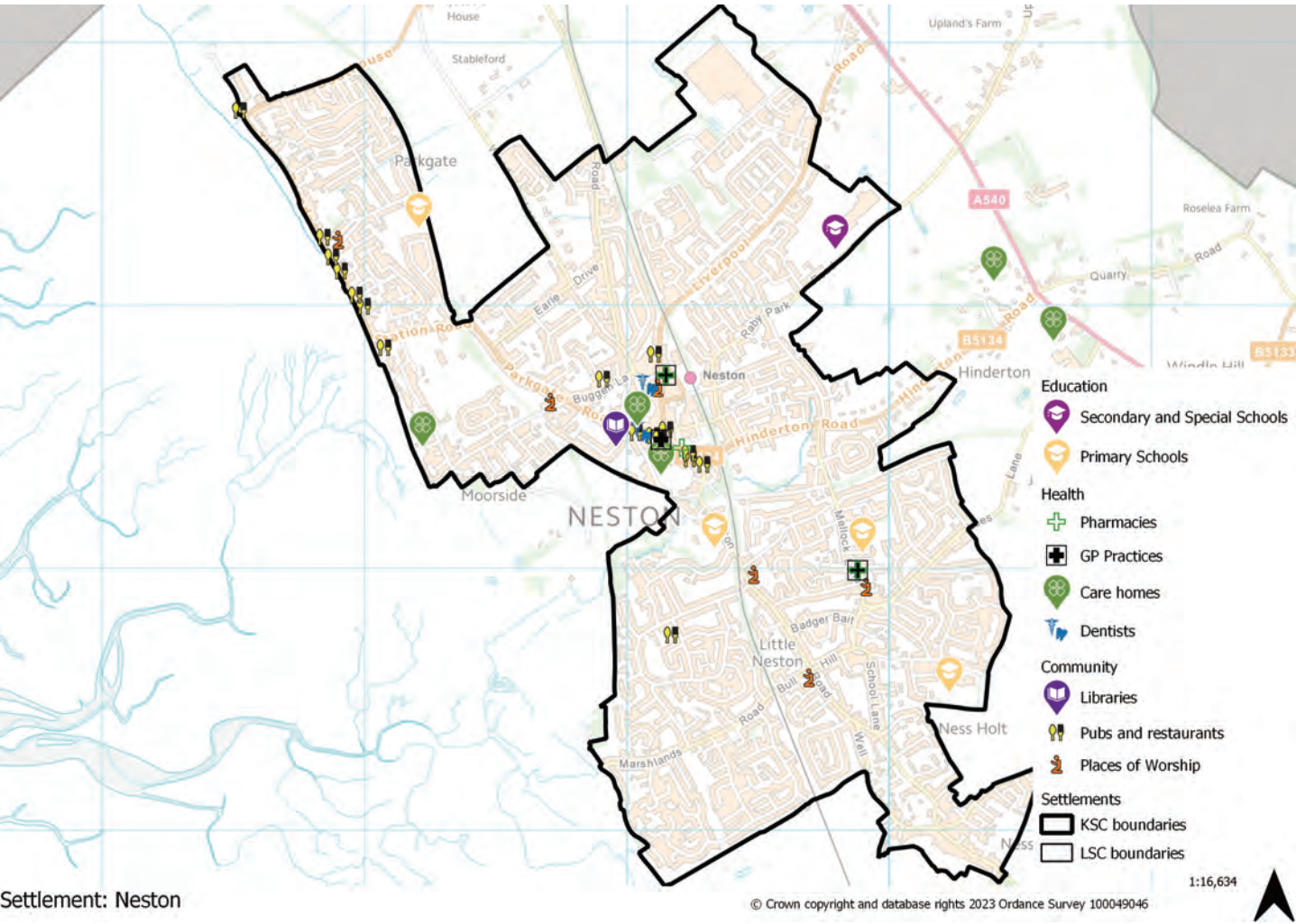
Figure 3.1 Neston retail goods by type



3 Availability of services and facilities

Social and community infrastructure

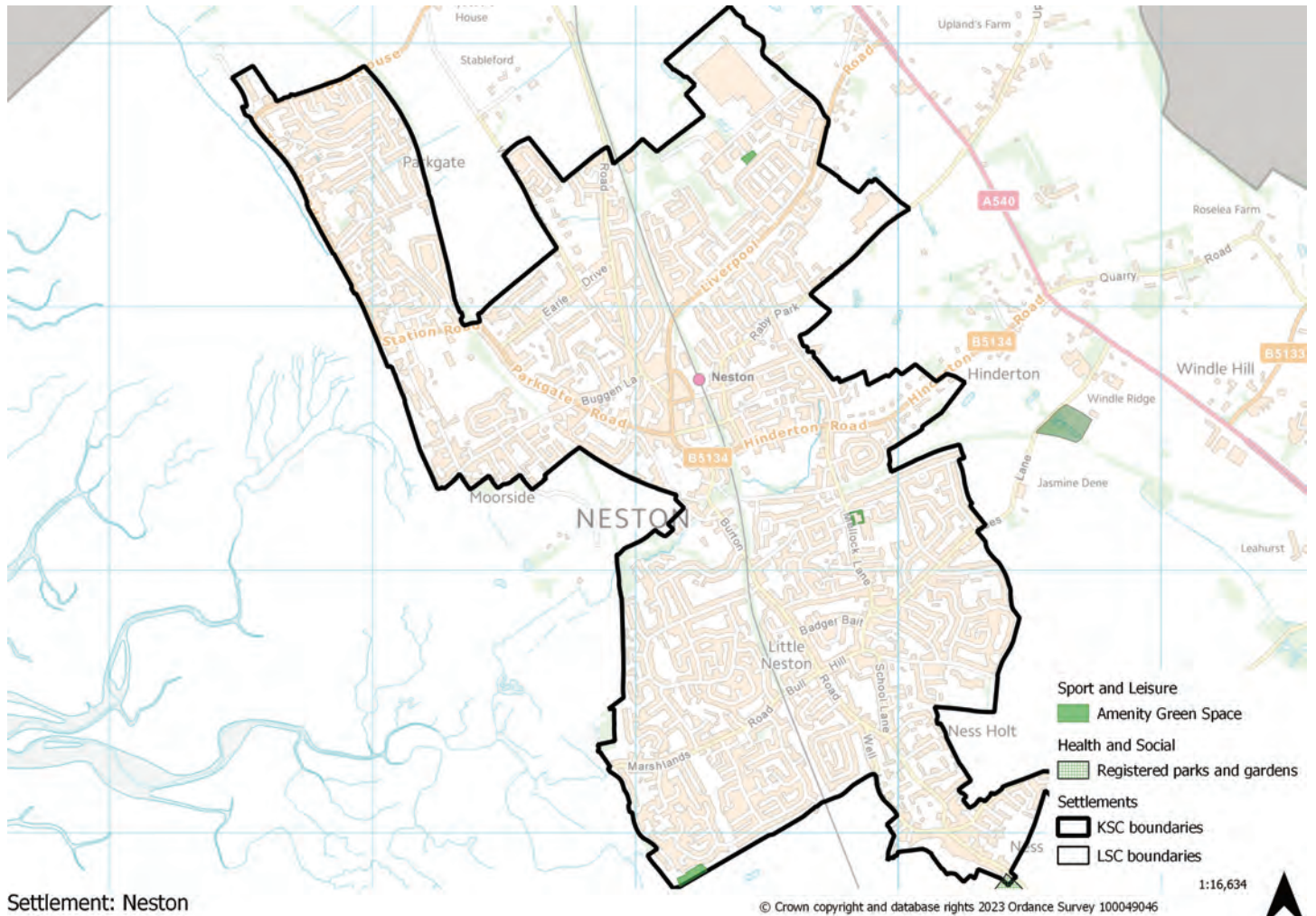
Map 3.1 Neston and Parkgate community facilities



Availability of services and facilities 3

Green infrastructure, sport and leisure

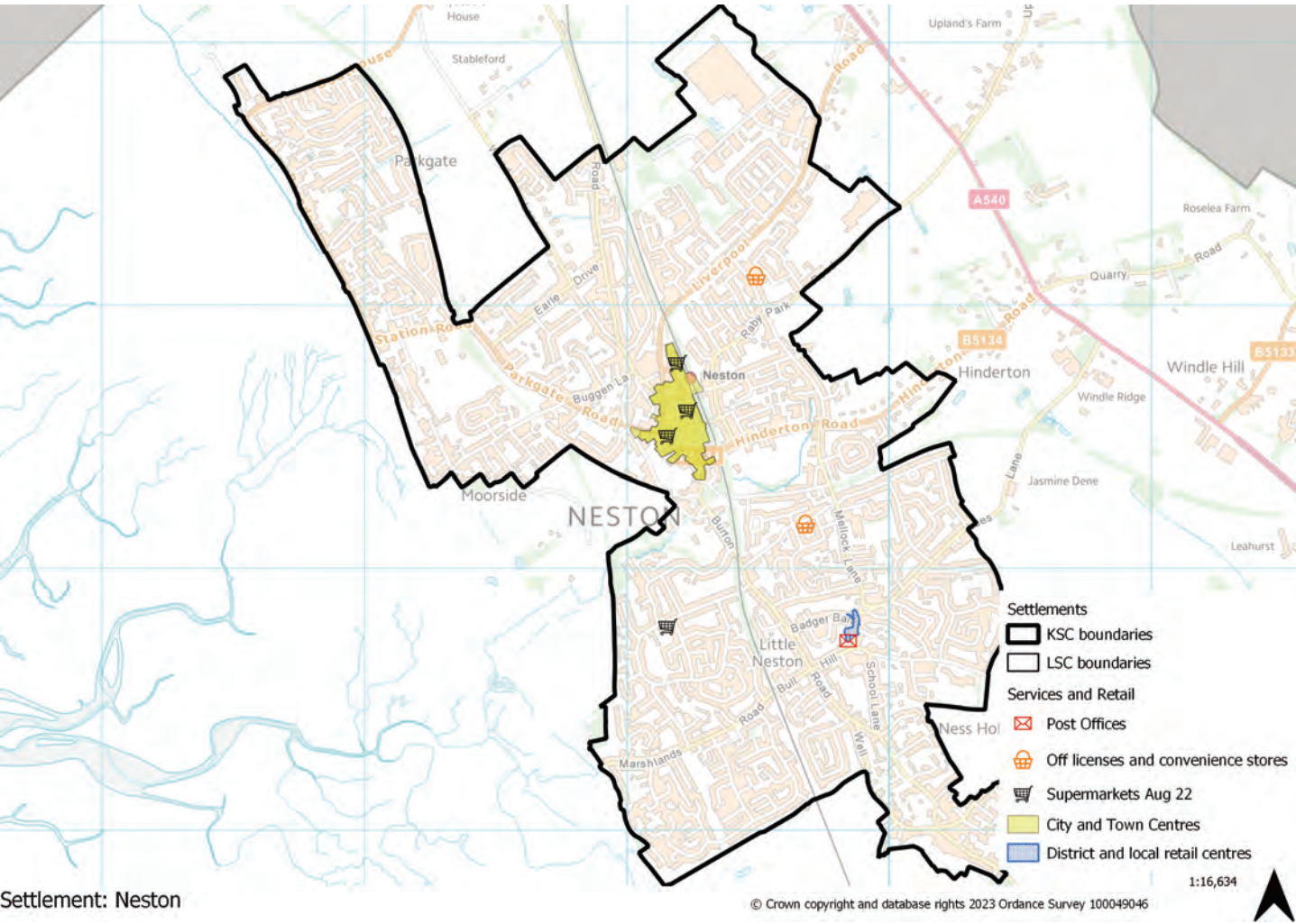
Map 3.2 Neston and Parkgate green infrastructure



3 Availability of services and facilities

Local retail and services

Map 3.3 Neston and Parkgate retail and services



Accessibility / access to public transport 4

4 Accessibility / access to public transport

Map 4.1 Neston accessibility

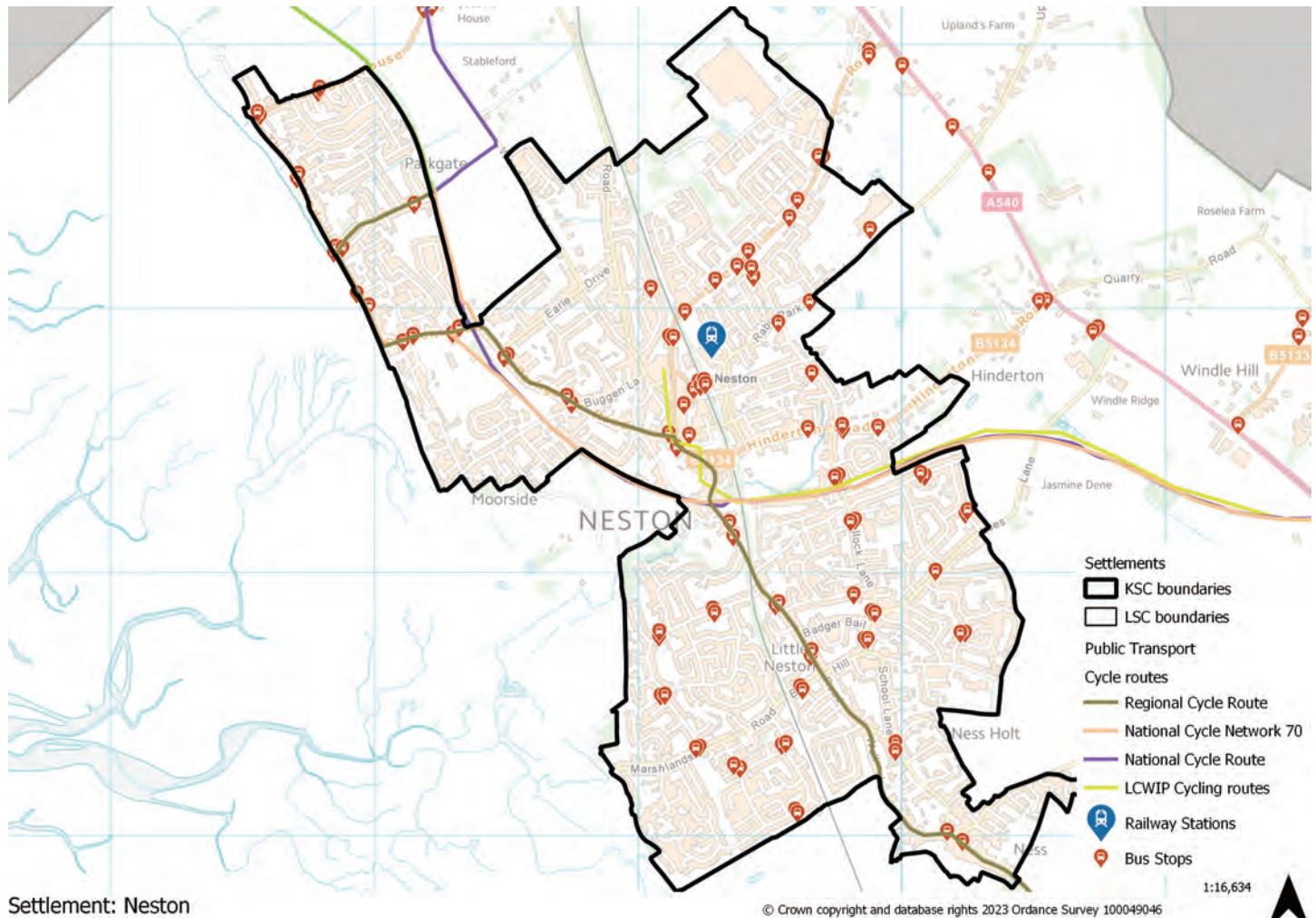


Table 4.1 Distance to other towns/higher order service centres

From Neston to:	Distance (approximate miles)	Approximate travel time by bus	Approximate travel time by train	Approximate travel time by bicycle	Approximate travel time by car
Chester	12	45 minutes	1 hour 5 minutes (no direct service)	1 hour 4 minutes	25 minutes
Ellesmere Port	10	1 hour 24 minutes (no direct service)	1 hour 42 minutes (no direct service)	47 minutes	23 minutes
Northwich	33	2 hours 4 minutes (no direct service)	1 hour 39 minutes (no direct service).	2 hours 39 minutes	50 minutes
Winsford	32	3 hours (no direct service)	1 hour 51 minutes (no direct service)	2 hours 46 minutes	53 minutes

4 Accessibility / access to public transport

From Neston to:	Distance (approximate miles)	Approximate travel time by bus	Approximate travel time by train	Approximate travel time by bicycle	Approximate travel time by car
Heswall	3.5	22 minutes	5 minutes	23 minutes	11 minutes
Liverpool	12 (via toll)	57 minutes	51 minutes (no direct service)	1 hour 4 minutes (using ferry)	27 minutes (using toll)

Table 4.2 Frequency of train services from Neston

Main train routes from Neston	Days	Frequency
Bidston	Mon-Fri and Sat and Sun	2/1 hour and 1/1 hour
Wrexham	Daily	1/1 hour

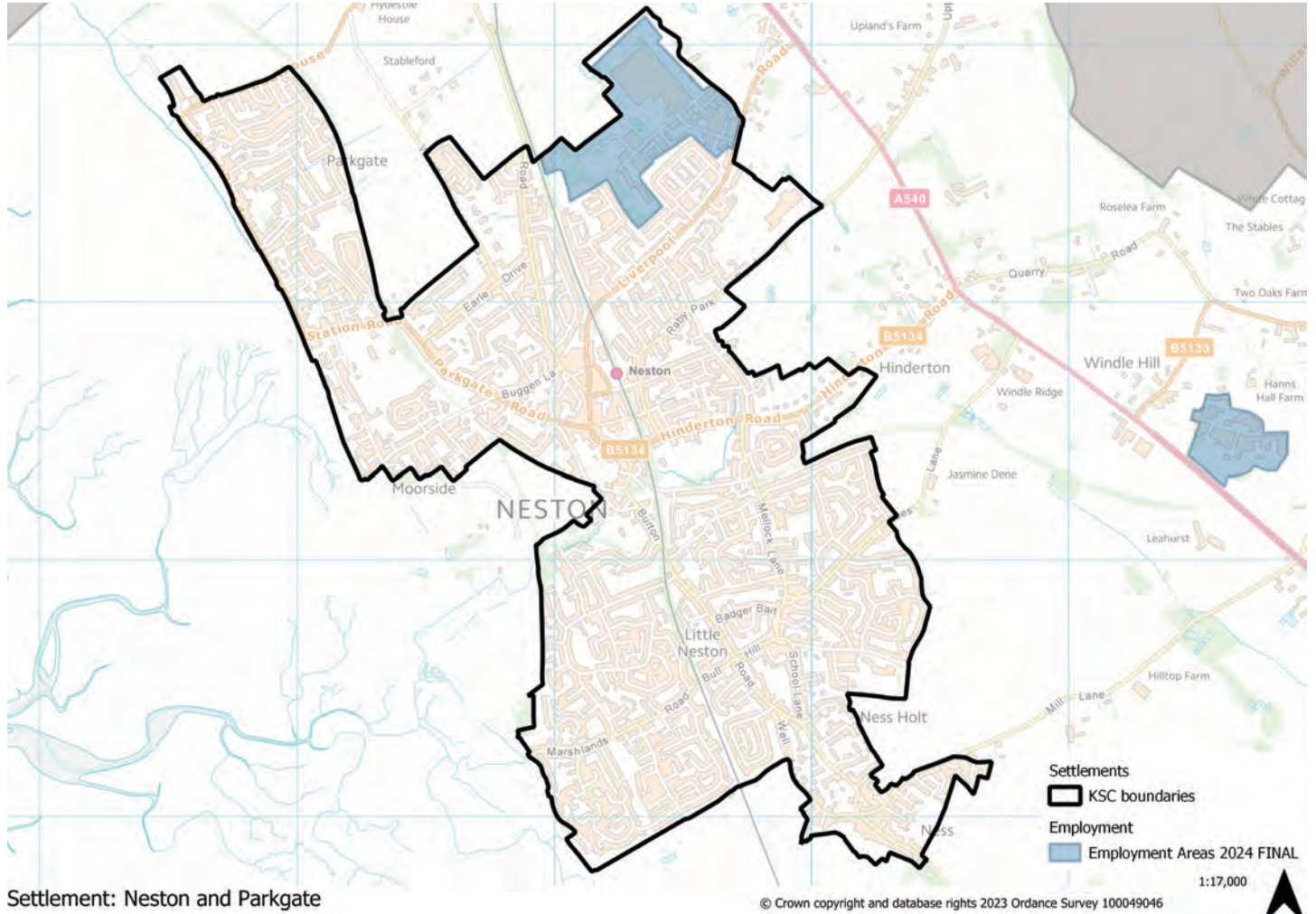
Table 4.3 Frequency of bus services from Neston

Bus routes from Neston and Parkgate	Days	Frequency
Kirby	Mon- Sat	1/1 hour
Ellesmere Port	Mon-Fri	1/1.5 hour
Liverpool	Daily	2/1 hour and 1/1 hour Sunday

Employment opportunities 5

5 Employment opportunities

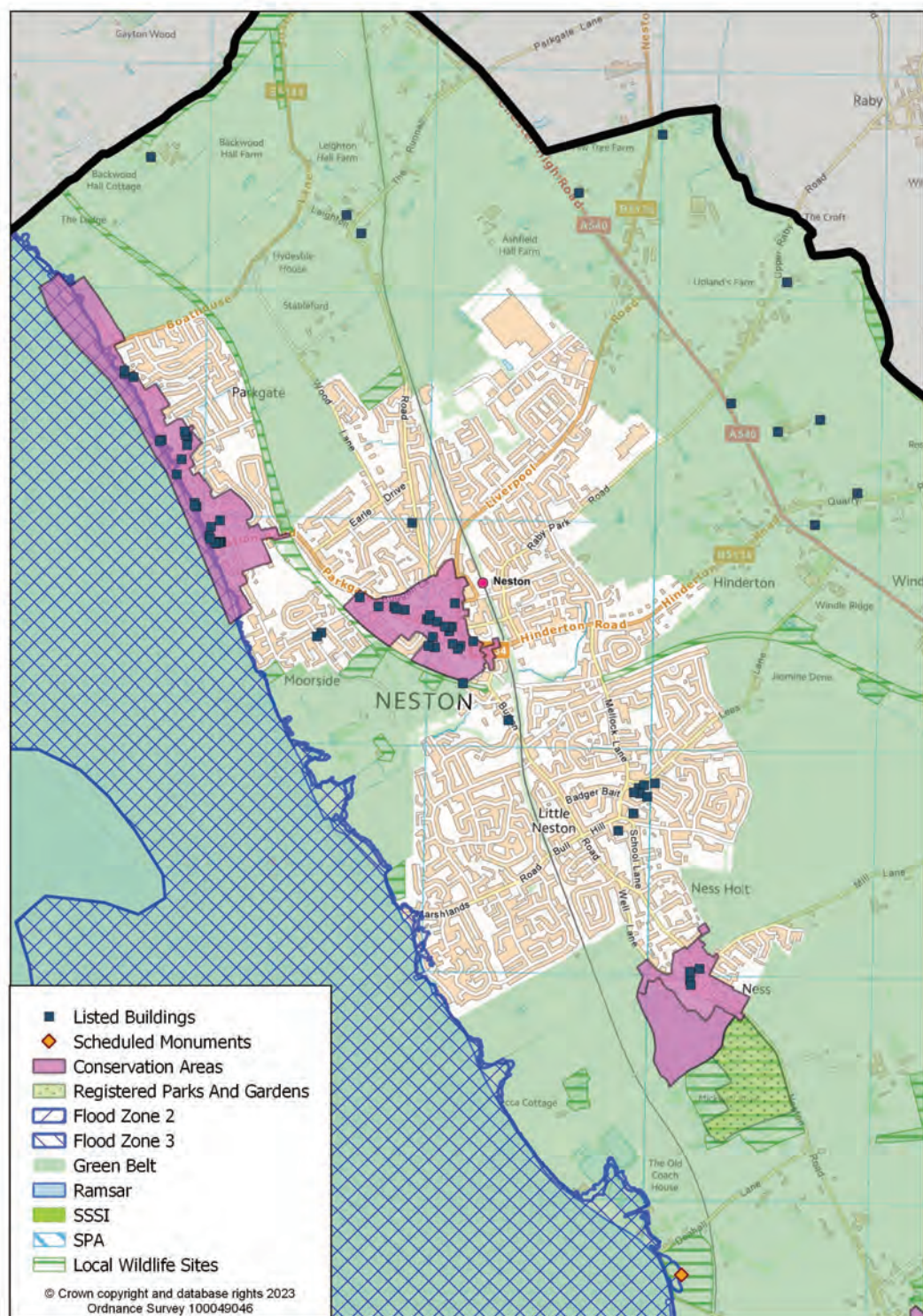
Picture 5.1



6 Constraints - natural / built environment

6 Constraints - natural / built environment

Map 6.1 Neston and Parkgate constraints



Constraints - natural / built environment 6

Landscape Character

Table 6.1 Landscape character assessment

Landscape Character Type	General Description
Mudflats and saltmarsh - Dee Estuary- to the west	The Dee Estuary landscape character area is an area of inter-tidal mudflats and salt-marsh along the western coastline of the Wirral peninsular. Its eastern boundary is sometimes defined by embankment and walling where it meets permanently dry land at high tide level. It extends northwards beyond the administrative borough boundary into Wirral.
Enclosed farmland - surrounding the settlement	This landscape character type is located on a peninsula formed by the Mersey and Dee estuaries. The landscape comprises low lying, very gently undulating or gently sloping topography and a distinctly rural, small to medium scale field pattern into which it is divided. Key characteristics are the strong field patterns, small woodlands, ponds and streams, nucleated rural villages and scattered farmsteads. Land use is a mix of arable and pasture.

7 Neston and Parkgate profile summary

7 Neston and Parkgate profile summary

Socio-economic profile

- Neston and Parkgate is a large settlement in the north west of the borough and has a 4.31% share of the borough’s population.
- The age profile shows that the highest percentage of residents are between 70 and 74.
- There are 7,000 households in the settlement, mostly 3 bedroom houses or bungalows, with the majority being 2 person households owned outright.
- 49.4% of residents are in employment, which is below the borough figure. The primary occupation of working residents is professional.
- 40.4% of the households have 1 car or van which is only 0.4% lower than the borough average.
- 31.9% of residents work from home only 0.4% higher than the borough figure and where they do travel to work the main method is by driving a car or van.

Availability of services and facilities

- Neston is identified as a town centre for retail policy. Neston is the smallest town centre in the borough and traditionally catered for convenience needs, however, the centre has been evolving and in recent years has developed a strong food and drink sector allowing people to dwell longer in the town centre and there is a popular market. Neston has supermarkets, post office and a number of convenience stores.

Social and community infrastructure

- Education – 4 primary schools, 2 secondary/special schools.
- Health – GP surgery and clinic, dentists, pharmacies and care homes.
- Community, culture and entertainment – Library, community centre, Places of Worship, pubs and restaurants.

Accessibility / access to public transport

- Neston has a railway station on the line that runs from Wrexham to Bidston (and on to Liverpool), with two services an hour.
- There is an hourly service to and from Heswall/West Kirby and to Ellesmere Port and a half hourly service to Liverpool.

Employment opportunities

Table 7.1 Neston and Parkgate employment opportunities

Number of jobs (2021)	Economically active (excluding full-time students)	Economically inactive	Jobs less economically active population	Job density
4,325	6,898	6,654	-2,573	0.63

Neston and Parkgate profile summary 7

Constraints - natural / built environment

- The settlement area of Neston and Parkgate is bounded by the North Cheshire Green Belt to the north, east and south.
- There are a number of built environment designations both within the settlement and the wider area, including the Neston, Ness and Parkgate Conservation Areas, a number of Listed Buildings and Ness Botanical Gardens, a registered park and garden.
- There are a number of natural environment designations covering parts of the settlement and the immediate surrounding area. These include four Local Wildlife Sites, a Site of Special Scientific Interest and three International designations which cover the Dee Estuary.
- High spring tides in the River Dee have resulted in flooding to small areas adjacent to the estuary marshes at Parkgate and Little Neston. The estuary is within Flood Zone 3a (high probability of flooding).