

Places background paper - Tarporley

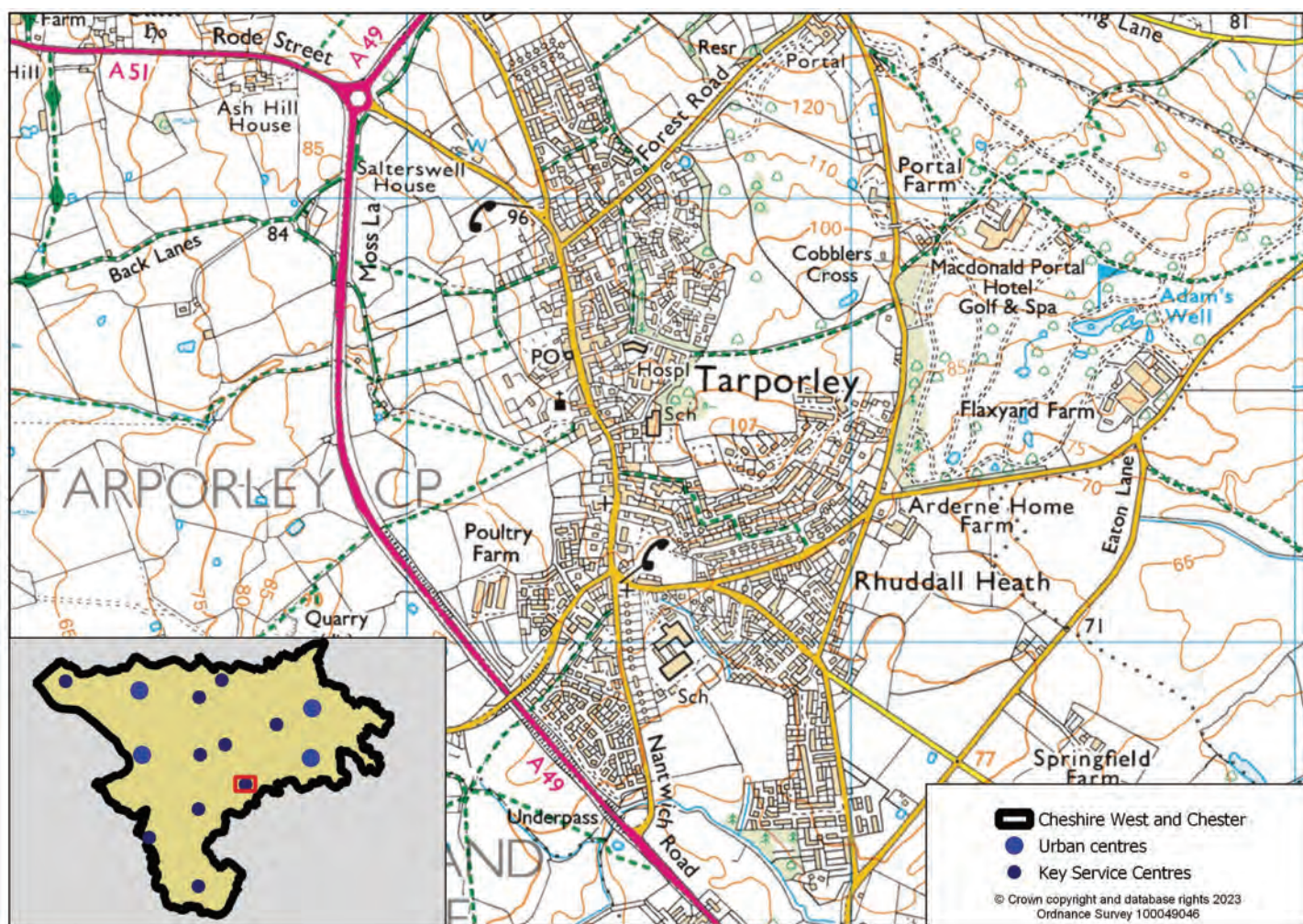
1	Tarporley	2
2	Socio-economic profile	3
3	Availability of services and facilities	9
	Social and community infrastructure	10
	Green infrastructure, sport and leisure	11
	Local retail and services	12
4	Accessibility / access to public transport	13
5	Employment opportunities	15
6	Constraints - natural / built environment	16
7	Tarporley profile summary	18

1 Tarporley

1 Tarporley

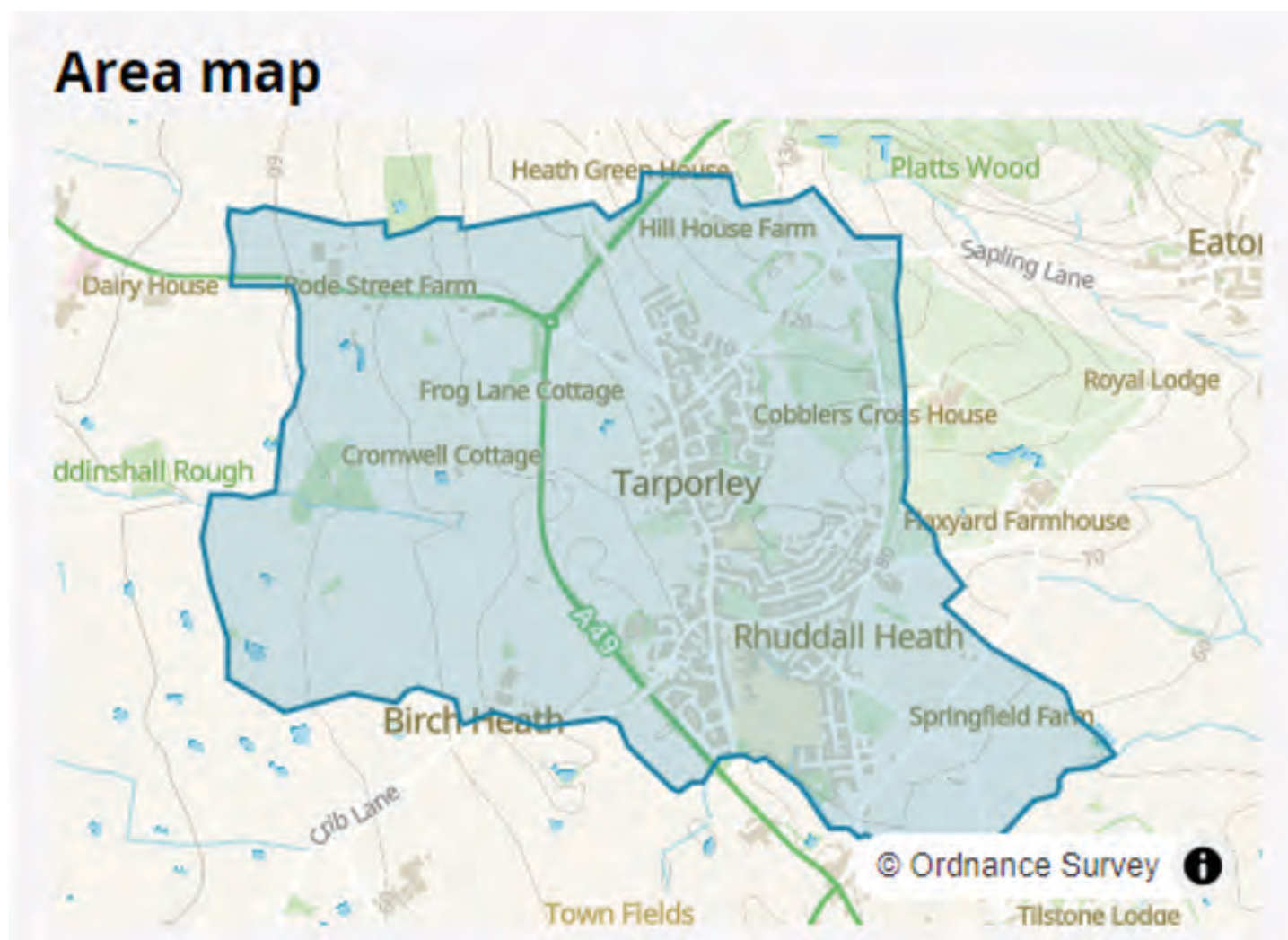
1.1 Tarporley lies to the south east of the borough. Tarporley is by-passed by the A49 providing links to Whitchurch to the south and Warrington to the north. The A51 also links Tarporley to Nantwich to the south east and Chester to the north west.

Map 1.1 Tarporley location



2 Socio-economic profile


Map 2.1 Tarporley area map



Tarporley: ONS – Built up area profile: The data and boundaries displayed in this profile are aggregated from small areas on a best-fit basis, and therefore may differ slightly from other sources: <https://www.ons.gov.uk/visualisations/customprofiles/build/>

2 Socio-economic profile

Table 2.1 Tarporley socio-economic profile

Topic	Settlement figure		Borough figure		Settlement share of borough total
Population					
Total existing population (Census 2021, rounded to the nearest 100 people)	3,200		357,200		0.90%
<div>Age Profile</div> <div>Picture 2.1</div> <div><p>Age profile</p><p>■ Tarporley</p><p>— (Cheshire West and Chester)</p><p>0 years 85+</p><p>% of all people, 5 year age bands</p></div> <div>(Census 2021)</div>	Age	%	Age	%	
	0-4:	3.9	0-4:	4.9	
	5-9:	5.1	5-9:	5.6	
	10-14:	7.2	10-14:	5.7	
	15-19:	5.2	15-19:	5.2	
	20-24:	2.6	20-24:	5.5	
	25-29:	4.3	25-29:	5.9	
	30-34:	4.1	30-34:	6.3	
	35-39:	4.7	35-39:	6.3	
	40-44:	5.4	40-44:	5.8	
	45-49:	7.4	45-49:	6.4	
	50-54:	7.2	50-54:	7.3	
	55-59:	8.0	55-59:	7.4	
	60-64:	6.9	60-64:	6.4	
	65-69:	7.0	65-69:	5.6	
	70-74:	7.4	70-74:	5.8	
	75-79:	5.3	75-79:	4.2	
	80-84:	4.9	80-84:	3.0	
	85+:	3.5	85+:	2.7	
	Households				
Number of households (2021 Census, rounded to the nearest 100 households)	1,400		155,200		0.90%
Household size	1 person in household	30.0%	1 person in household	30.2%	N/A

Socio-economic profile 2

Topic	Settlement figure		Borough figure		Settlement share of borough total
(2021 Census, percentage of all households)					
	2 people in household	39.7%	2 people in household	36.4%	
	3 people in household	13.0%	3 people in household	16.1%	
	4 or more people in household	17.2%	4 or more people in household	17.2%	
Household composition (2021 Census, percentage of all households)	One person household	30.1%	One person household	30.2%	N/A
	Single family household	67.2%	Single family household	65.3%	
	Other household types	2.7%	Other household types	4.4%	
Accommodation type (2021 Census, percentage of all households)	Whole house or bungalow	96.2%	Whole house or bungalow	87.4%	N/A
	Flat, maisonette or apartment	3.8%	Flat, maisonette or apartment	11.9%	
	A caravan or other mobile or temporary structure	0.0%	A caravan or other mobile or temporary structure	0.7%	
Number of bedrooms (2021 Census, percentage of all households)	1 bedroom	2.0%	1 bedroom	7.0%	N/A
	2 bedrooms	19.8%	2 bedrooms	23.1%	
	3 bedrooms	37.6%	3 bedrooms	45.7%	
	4 or more bedrooms	40.6%	4 or more bedrooms	24.3%	
Tenure of household (2021 Census, percentage of all households)	Owns outright	48.4%	Owns outright	37.1%	N/A
	Owns with a mortgage or loan or shared ownership	33.7%	Owns with a mortgage or loan or shared ownership	32.4%	
	Social rented	5.8%	Social rented	14.6%	
	Private rented or lives rent free	12.1%	Private rented or lives rent free	15.8%	
Employment					

2 Socio-economic profile

Topic	Settlement figure		Borough figure		Settlement share of borough total
Economic activity status (2021 Census, % of people aged 16 years and over)	Economically active: In employment	53.6%	Economically active: In employment	57.2%	N/A
	Economically active: Unemployed	2.6%	Economically active: Unemployed	2.8%	
	Economically inactive	43.8%	Economically inactive	40.0%	
Employment history (2021 Census, % of people aged 16 years and over not in employment)	Not in employment: Worked in the last 12 months	11.8%	Not in employment: Worked in the last 12 months	12.3%	
	Not in employment: Not worked in the last 12 months	74.7%	Not in employment: Not worked in the last 12 months	67.3%	
	Not in employment: Never worked	13.6%	Not in employment: Never worked	20.5%	
Occupation (2021 Census, % of people aged 16 years and over in employment)	Managers, directors and senior officials	23.3%	Managers, directors and senior officials	14.0%	
	Professional occupations	24.3%	Professional occupations	20.5%	
	Associate professional and technical occupations	14.8%	Associate professional and technical occupations	13.2%	
	Administrative and secretarial occupations	9.9%	Administrative and secretarial occupations	8.9%	
	Skilled trades occupations	7.9%	Skilled trades occupations	9.3%	
	Caring, leisure and other service occupations	5.6%	Caring, leisure and other service occupations	8.8%	
	Sales and customer service occupations	5.3%	Sales and customer service occupations	8.2%	

Socio-economic profile 2

Topic	Settlement figure		Borough figure		Settlement share of borough total
	Process, plant and machine operatives	3.7%	Process, plant and machine operatives	6.9%	
	Elementary occupations	5.2%	Elementary occupations	10.2%	
Travel to work and transport					
Number of cars or vans (2021 Census, % of all households)	No cars or vans in household	8.7%	No cars or vans in household	16.7%	N/A
	1 car or van in household	40.6%	1 car or van in household	40.8%	
	2 cars or vans in household	40.5%	2 cars or vans in household	32.0%	
	3 or more cars or vans in household	10.2%	3 or more cars or vans in household	10.5%	
Distance travelled to work (2021 Census, % of people aged 16 years and over in employment)	Less than 10km	14.4%	Less than 10km	32.7%	N/A
	10km to less than 30km	23.5%	10km to less than 30km	18.6%	
	30km and over	7.3%	30km and over	5.2%	
	Works mainly from home	43.8%	Works mainly from home	31.5%	
	Other	11.1%	Other	12.1%	
Method of travel to workplace (2021 Census, % of people aged 16 years and over in employment)	Work mainly at or from home	43.9%	Work mainly at or from home	31.5%	N/A
	Underground, metro, light rail, tram	0.1%	Underground, metro, light rail, tram	0.1%	
	Train	0.1%	Train	0.8%	
	Bus, minibus or coach	0.1%	Bus, minibus or coach	1.7%	
	Taxi	0.0%	Taxi	0.6%	
	Motorcycle, scooter or moped	0.0%	Motorcycle, scooter or moped	0.4%	

2

Socio-economic profile

Topic	Settlement figure		Borough figure		Settlement share of borough total
	Driving a car or van	45.2%	Driving a car or van	50.8%	
	Passenger in a car or van	2.4%	Passenger in a car or van	3.9%	
	Bicycle	0.6%	Bicycle	2.0%	
	On foot	6.4%	On foot	7.4%	
	Other method of travel to work	1.3%	Other method of travel to work	0.9%	

3 Availability of services and facilities

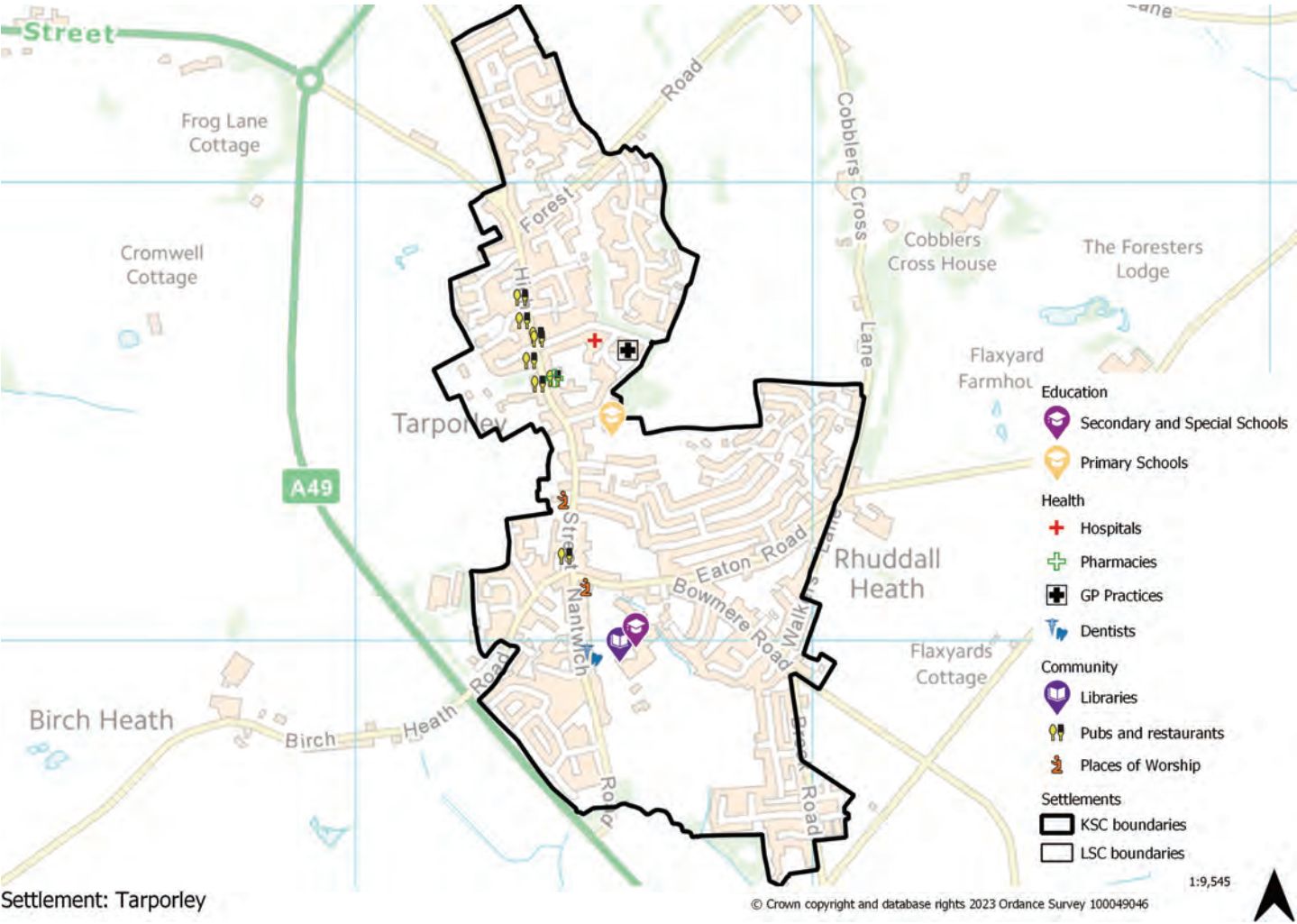
Tarporley Local Retail Centre

3.1 High Street - Tarporley has an attractive Local Retail Centre running north to south through the village, almost all of which is in its Conservation Area. The main road through the village has been by-passed by the A49. This is a successful centre with a low vacancy rate, though there is a regular turnover of retail businesses. There is a mix of independent retailers mainly focusing on non-food goods, such as hairdressers and barbers, and eating and drinking venues. There is one hotel on the High Street and another at the golf course. The centre is mixed with residential properties, many of which have no off-road parking. Outside the centre there are uses such as a high school, primary school, pre-school, community centre, 3 churches, doctors' surgeries and dentists. All these uses are within walking distance of the Local Retail Centre and can contribute to footfall and linked trips. For this reason, the centre can be busy and attracts visitors beyond the immediate residents. The High Street is a busy road, with many residents using the street to access their homes, as well as people commuting to and through the centre. There is on-street parking, some of which is time limited to 2 hours, as well as 3 car parks off the High Street. The roadway of the High Street is frequently congested with cars because most of the commercial and community uses are clustered around the one street compared with other centres that have uses spread round the village. This gives a real focus to the village of Tarporley.

3 Availability of services and facilities

Social and community infrastructure

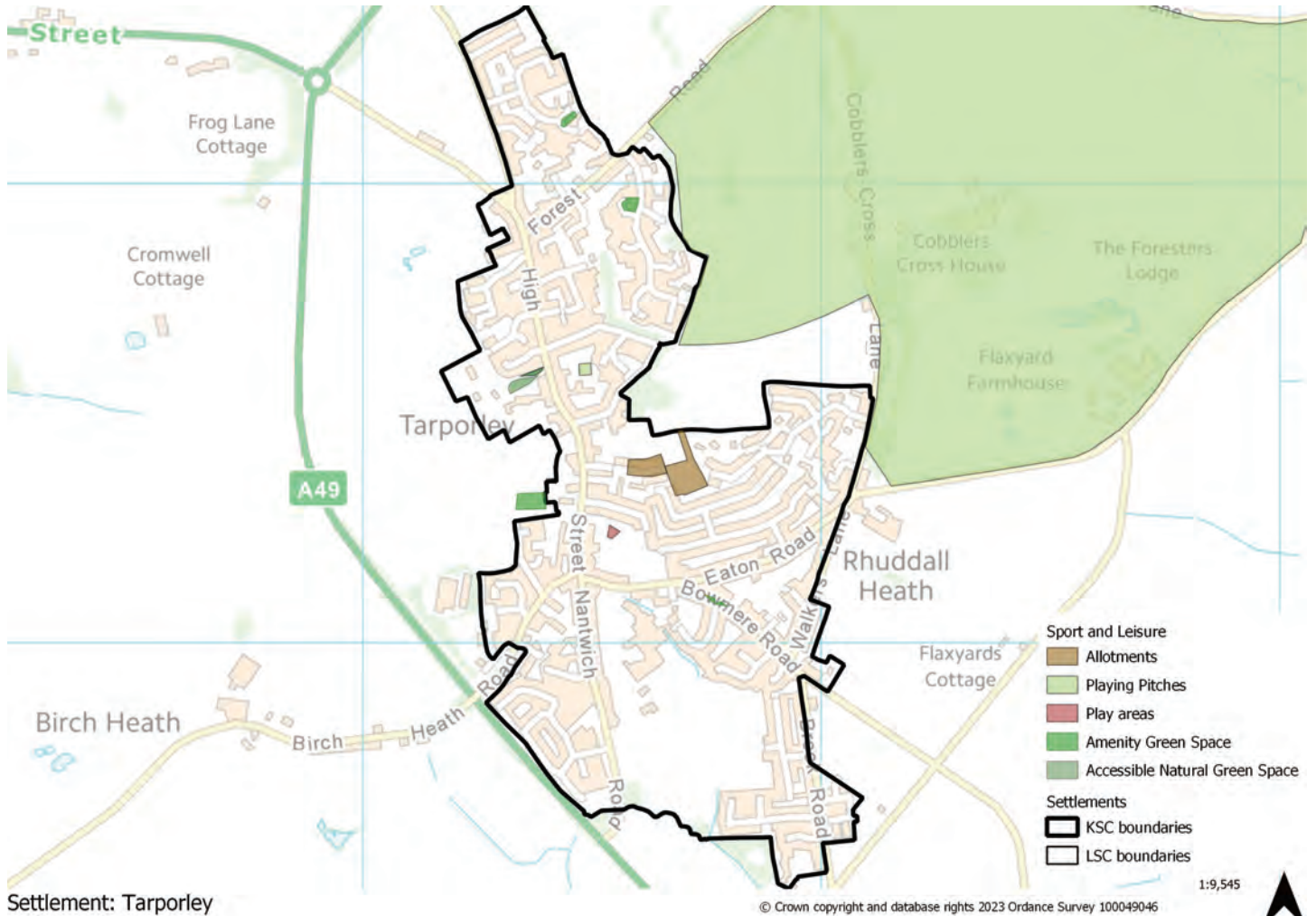
Map 3.1 Tarporley community facilities



Availability of services and facilities 3

Green infrastructure, sport and leisure

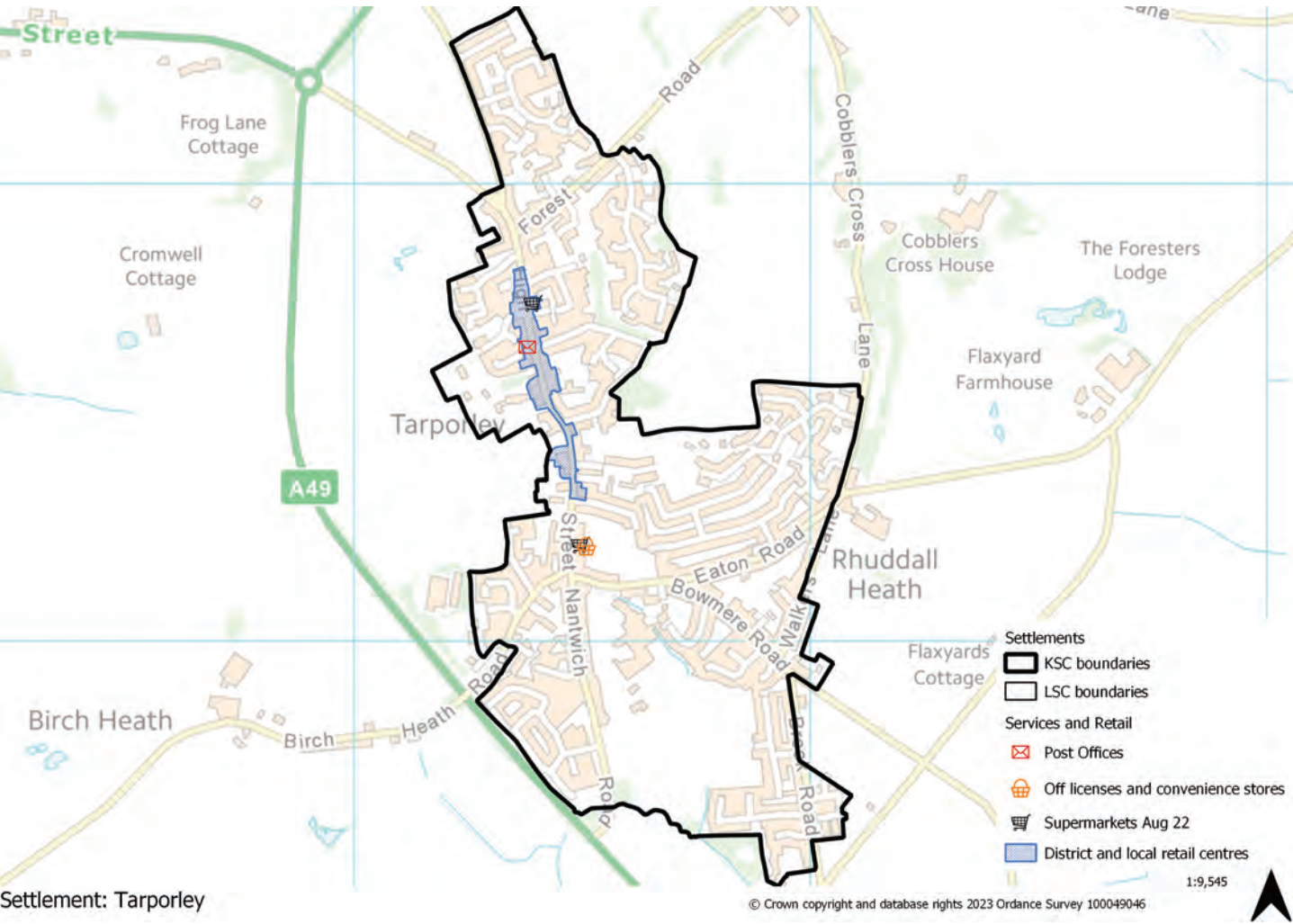
Map 3.2 Tarporley green infrastructure



3 Availability of services and facilities

Local retail and services

Map 3.3 Tarporley retail and services



Accessibility / access to public transport 4

4 Accessibility / access to public transport

Map 4.1 Tarporley accessibility

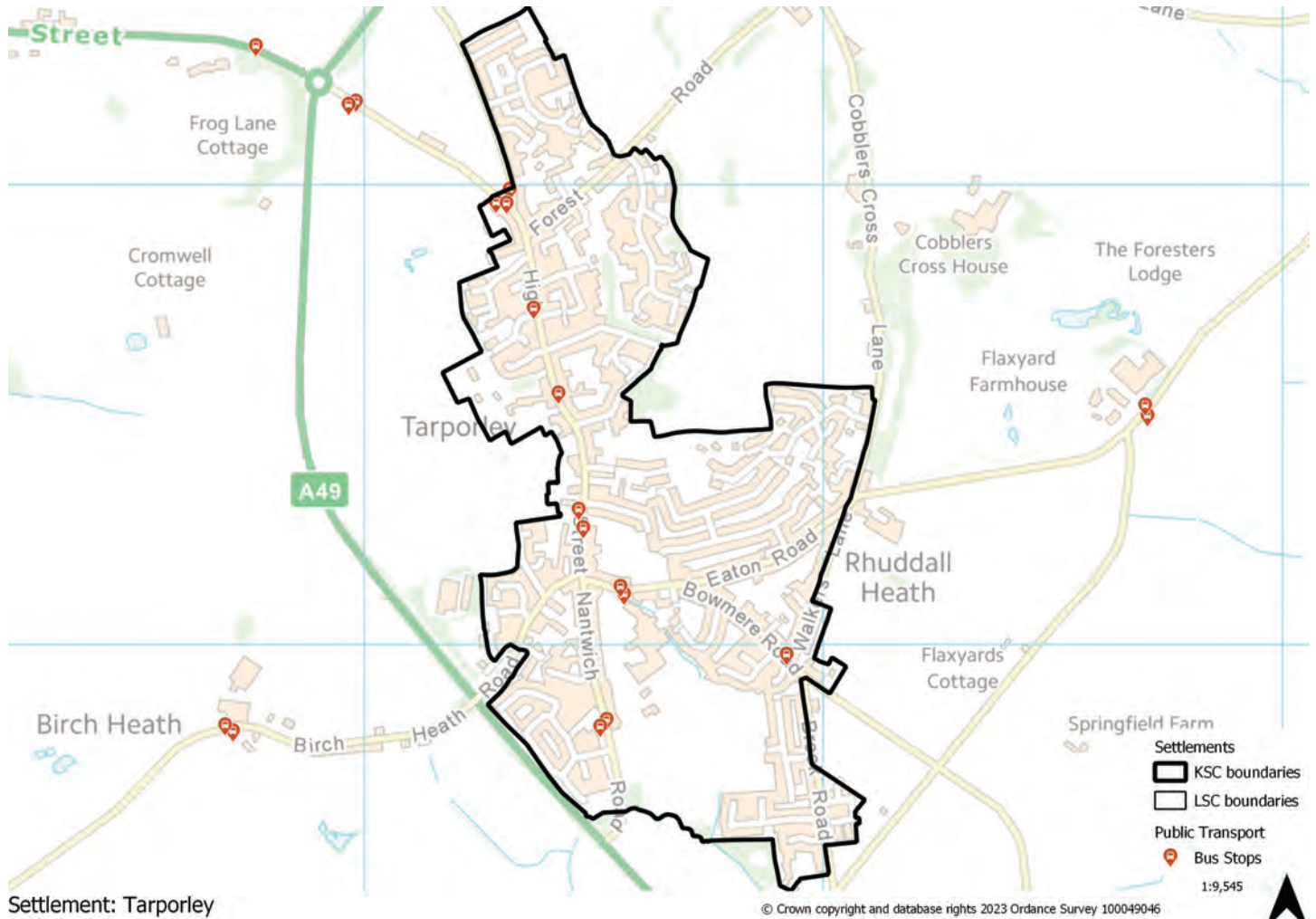


Table 4.1 Distance to other towns/higher order service centres

From Tarporley to:	Distance (approximate miles)	Approximate travel time by bus	Approximate travel time by train	Approximate travel time by bicycle	Approximate travel time by car
Chester	11	33 minutes	N/A	1 hour 3 minutes	29 minutes
Ellesmere Port	16	1 hour 21 minutes (no direct service)	N/A	1 hour 22 minutes	27 minutes
Northwich	10	1 hour 16 minutes (no direct service)	N/A	1 hour 2 minutes	24 minute
Winsford	9	2 hours 4 minutes (no direct service)	N/A	44 minutes	18 minute
Nantwich	11	29 minutes	N/A	1 hour 1 minute	22 minutes

4 Accessibility / access to public transport

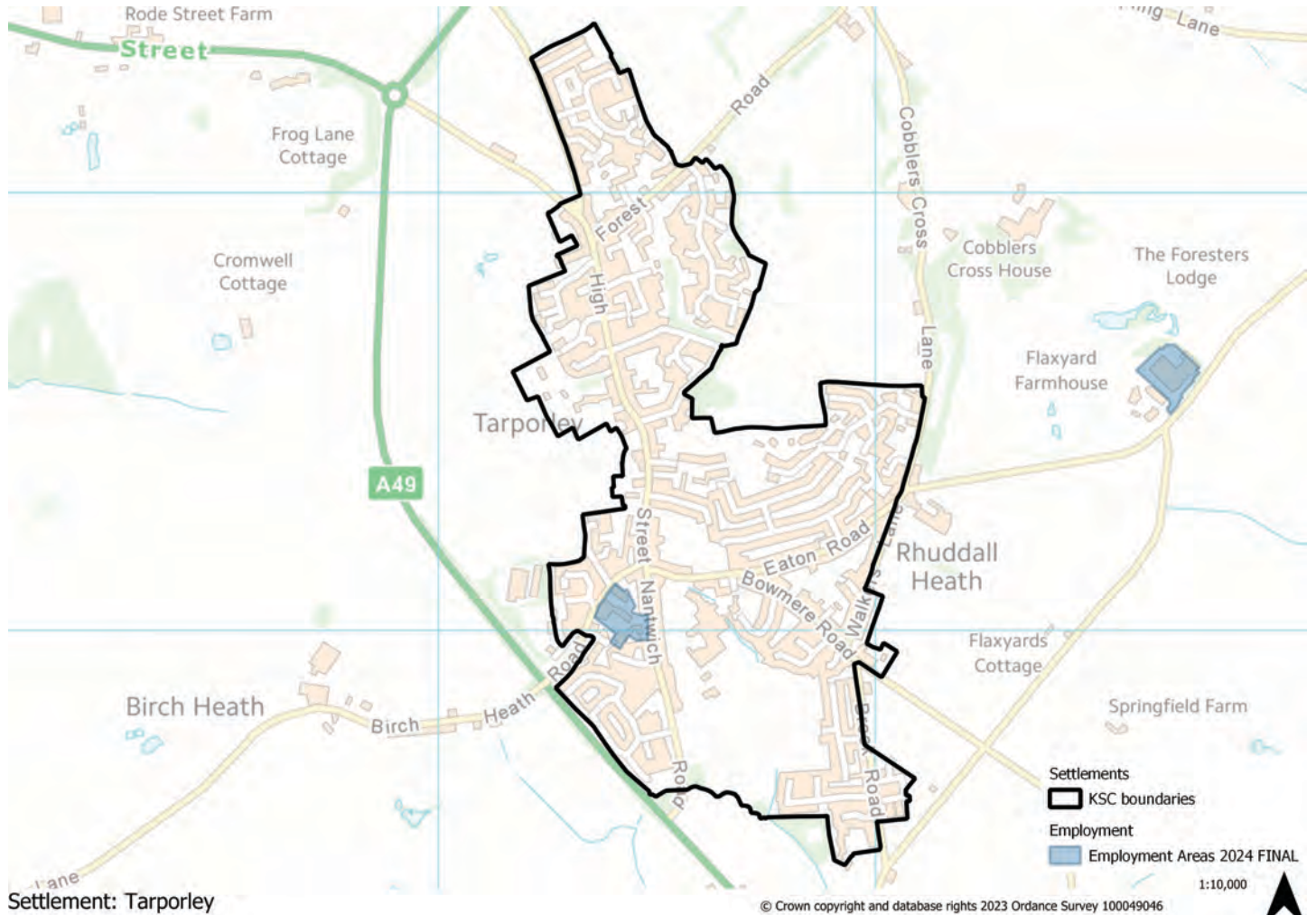
From Tarporley to:	Distance (approximate miles)	Approximate travel time by bus	Approximate travel time by train	Approximate travel time by bicycle	Approximate travel time by car
Crewe	14	55 minutes	N/A	1 hour 18 minutes	30 minutes

Table 4.2 Frequency of bus services from Tarporley

Bus routes from Tarporley	Days	Frequency
Crewe	Daily	1/1 hour and 1/1.5 hour Sunday
Chester	Daily	1/1 hour and 1/1.5 hour Sunday

5 Employment opportunities

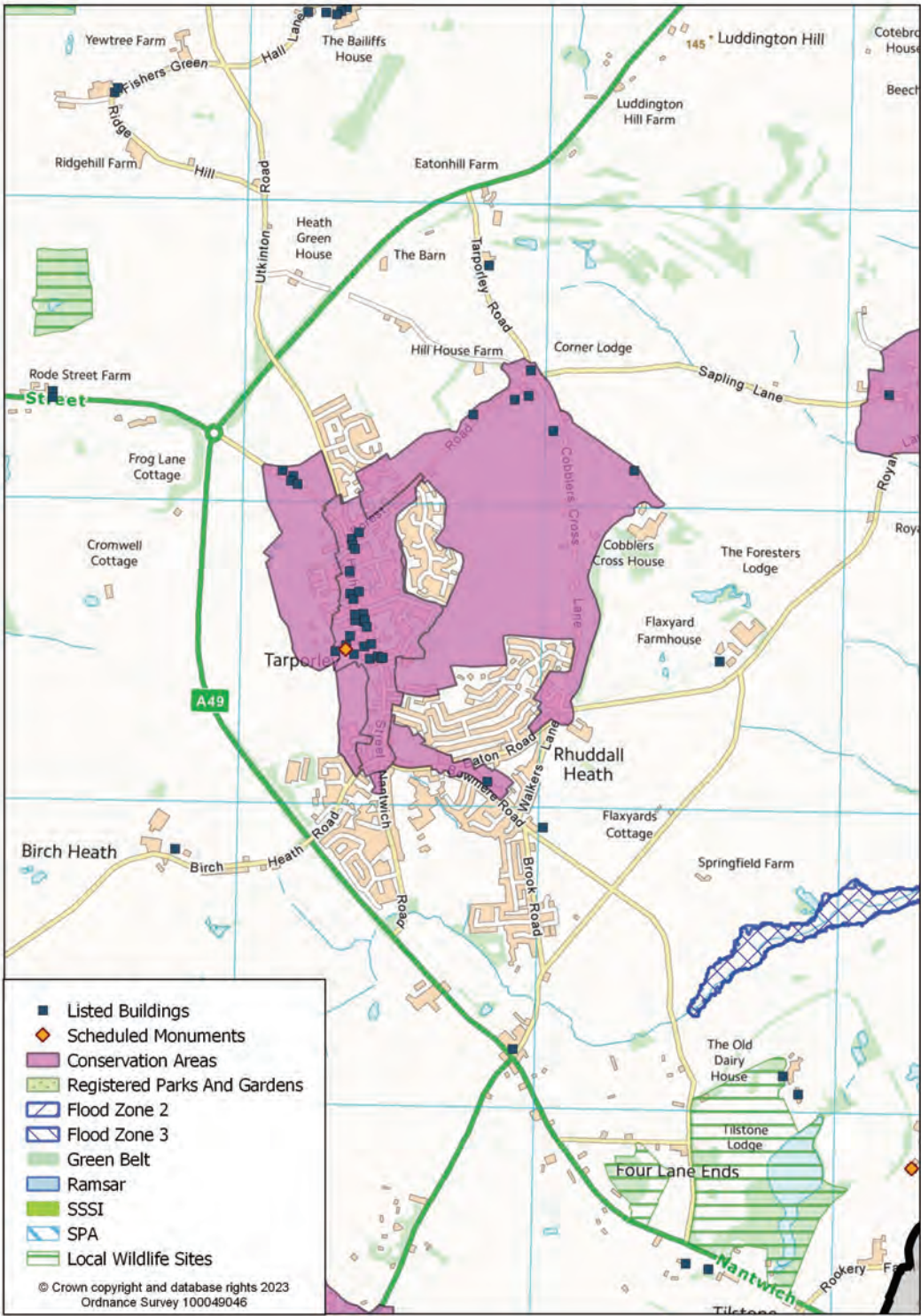
Picture 5.1



6 Constraints - natural / built environment

6 Constraints - natural / built environment

Map 6.1 Tarporley constraints



Constraints - natural / built environment6

Landscape Character

Table 6.1 Landscape character assessment

Landscape Character Type	General Description
Sandstone Ridge (Eddisbury) - to the north	The Eddisbury Sandstone Ridge is a prominent ridge that extends from Eddisbury Lodge in the north to Tarporley in the south, as a continuation southwards of the Frodsham Sandstone Ridge. The boundaries are defined primarily by geology and topography. The Sandstone Ridge stands prominently above the surrounding Plain and is visually one of the most distinctive landmarks in the Cheshire West and Chester landscape.
Sandstone Fringe (Helsby to Tarporley) - to the west	The Helsby to Tarporley Sandstone Fringe wraps around the western edge of the Sandstone Ridge from Helsby in the north to Tarporley in the south, forming a transitional landscape between the Sandstone Ridge and the Cheshire Plain West. This Sandstone Fringe landscape is defined by its sandstone geology and intermediate topography and continues to the south.
Undulating enclosed farmland (Eaton, Marton and Over) - to the south	The Eaton, Marton & Over Undulating Enclosed Farmland is a transitional area of gently undulating farmland lying between the elevated areas of Delamere and the Eddisbury Sandstone Ridge to the west, and the flat lowland of the Cheshire plain to the south and west. It extends from Tiverton and Tarporley in the west to wrap around the north western and southern edges of Winsford to the east, where it abuts the Weaver Valley.

7 Tarporley profile summary

7 Tarporley profile summary

Socio-economic profile

- Tarporley is a small settlement located in the south east of the borough and has a 0.90% share of the borough’s population.
- The age profile shows that the highest percentage of residents are between 55 and 59.
- There are 1,400 households in the settlement, mostly 4 or more bedroom houses or bungalows, with the majority being 2 person households owned outright.
- 53.6% of residents are in employment, which is below the borough figure. The primary occupation of working residents is professional.
- 40.6% of the households have 1 car or van which is only 0.2% lower than the borough average.
- 43.8% of residents work from home which is higher than the borough figure and where they do travel to work the main method is by driving a car or van.

Availability of services and facilities

- Tarporley has a Local Retail Centre running north to south along the High Street which has a good mix of independent retailers mainly focusing on non-food goods or food and drink services. There is a small Co-op, and a Spar at the petrol station to the south of the High Street. Outside the centre there is a high school with sixth form college, primary school, pre-school, community centre, churches, doctors’ surgeries, dentists, and fitness gyms.

Social and community infrastructure

- Education – Pre-school, primary school, high school with sixth form college
- Health – 2 GP surgeries, an outpatient and office facility run by the Countess of Chester Hospital, pharmacy, 2 dentists, chiropody, well- being centre with access to private health care.
- Community, culture and entertainment – library, places of worship, pubs cafes and restaurants, community centre, tennis club, bowling green, allotments, 3 golf courses, golf driving range.

Accessibility / access to public transport

- Tarporley is by-passed by the A49 providing links to Whitchurch to the south and Warrington to the north. The A51 also links Tarporley to Nantwich to the south east and Chester to the north west.
- A hourly bus service is available to and from Crewe via Nantwich and to Chester via Tarvin. No rail services are available from Tarporley.

Employment opportunities

Table 7.1 Tarporley employment opportunities

Number of jobs (2021)	Economically active (excluding full-time students)	Economically inactive	Jobs less economically active population	Job density
1,715	1,445	1,160	270	1.19

Tarporley profile summary 7

Constraints - natural / built environment

- Tarporley has an extensive Conservation Area that covers most of the High Street and extends to the east of the built up area of the settlement. There is a concentration of Listed Buildings along High Street.
- There is an area affected by Flood Zone 2 and 3 along Wettenhall Brook, however this is outside the settlement to the south east.