

Places background paper - Tarvin

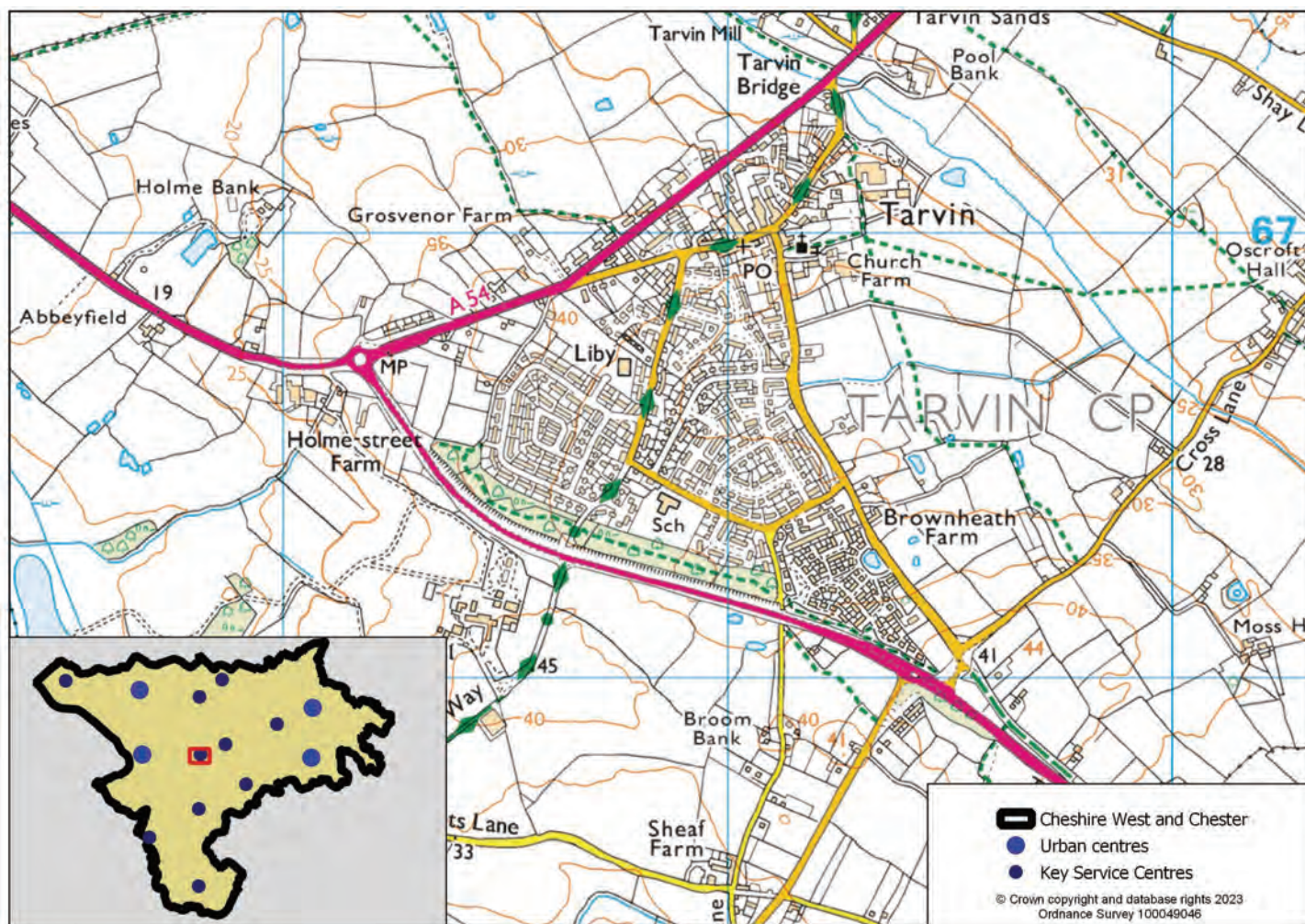
1	Tarvin .....	2
2	Socio-economic profile .....	3
3	Availability of services and facilities .....	9
	Social and community infrastructure .....	9
	Green infrastructure, sport and leisure .....	10
	Local retail and services .....	11
4	Accessibility / access to public transport .....	12
5	Employment opportunities .....	14
6	Constraints - natural / built environment .....	15
7	Tarvin profile summary .....	17

# 1 Tarvin

## 1 Tarvin

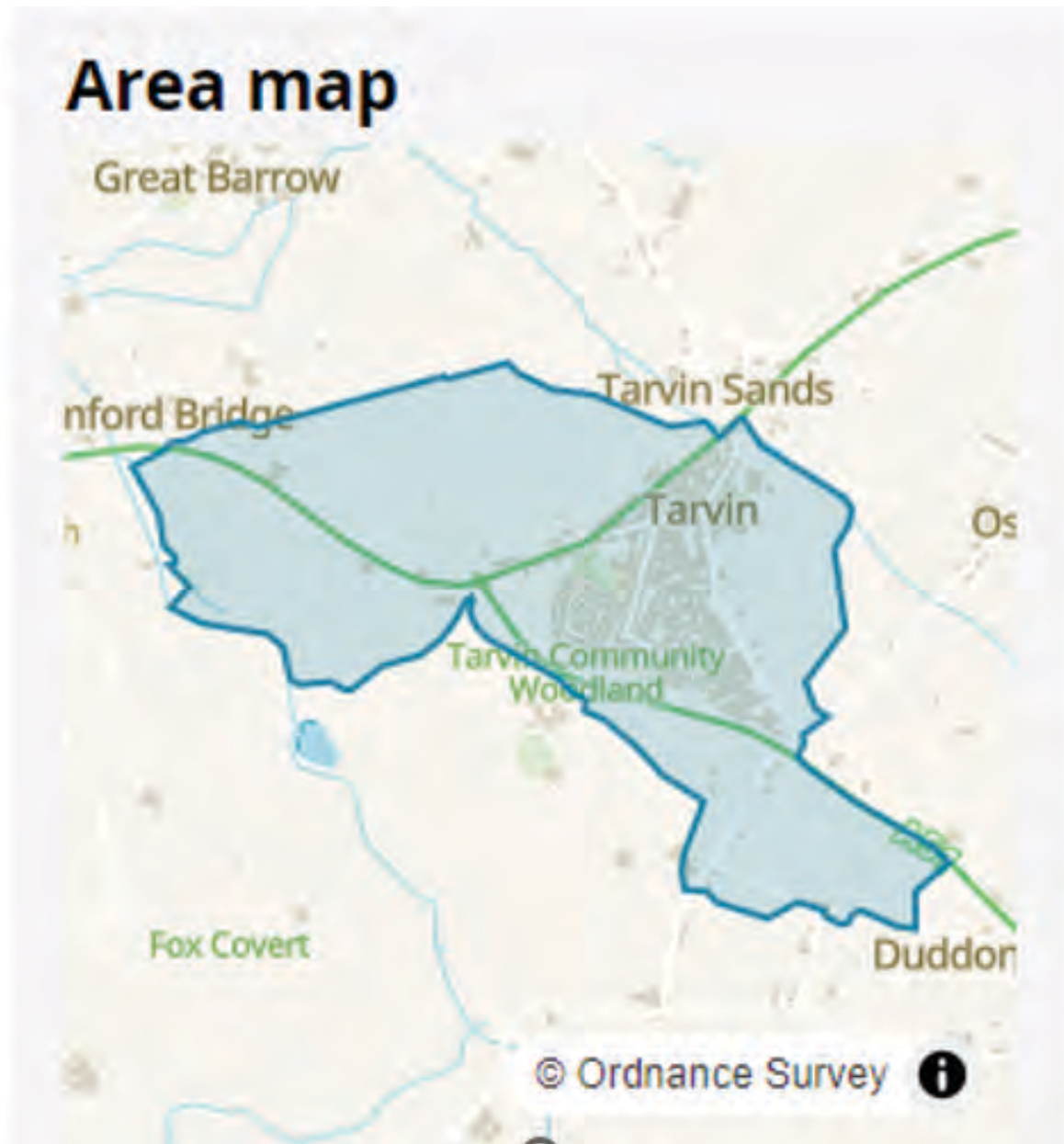
1.1 Tarvin is located centrally within the borough off the A54 which links Chester with Northwich and Winsford.

Map 1.1 Tarvin location



## 2 Socio-economic profile

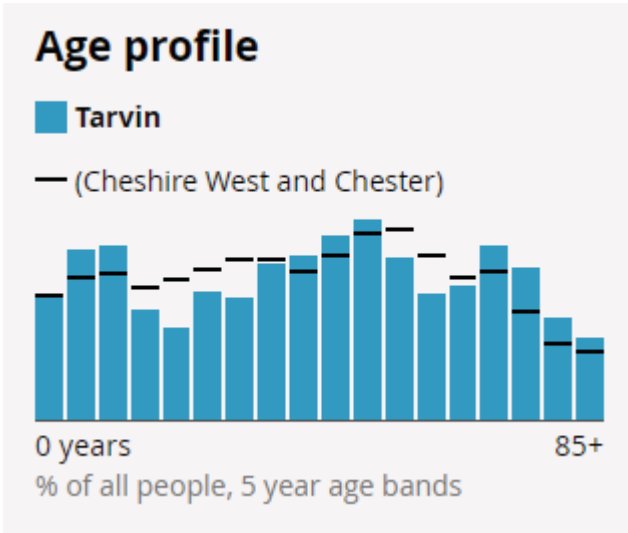
Picture 2.1 Tarvin area map



Tarvin: ONS – Built up area profile: The data and boundaries displayed in this profile are aggregated from small areas on a best-fit basis, and therefore may differ slightly from other sources: <https://www.ons.gov.uk/visualisations/customprofiles/build/>

2 Socio-economic profile

Table 2.1 Tarvin socio-economic profile

Topic	Settlement figure		Borough figure		Settlement share of borough total
Population					
Total existing population  (Census 2021, rounded to the nearest 100 people)	2,700		357,200		0.76%
Age Profile  Picture 2.2    (Census 2021)	Age	%	Age	%	
	0-4:	4.9	0-4:	4.9	
	5-9:	6.6	5-9:	5.6	
	10-14:	6.8	10-14:	5.7	
	15-19:	4.3	15-19:	5.2	
	20-24:	3.6	20-24:	5.5	
	25-29:	5.0	25-29:	5.9	
	30-34:	4.8	30-34:	6.3	
	35-39:	6.1	35-39:	6.3	
	40-44:	6.4	40-44:	5.8	
	45-49:	7.2	45-49:	6.4	
	50-54:	7.8	50-54:	7.3	
	55-59:	6.3	55-59:	7.4	
	60-64:	4.9	60-64:	6.4	
	65-69:	5.2	65-69:	5.6	
	70-74:	6.8	70-74:	5.8	
	75-79:	5.9	75-79:	4.2	
	80-84:	4.0	80-84:	3.0	
	85+:	3.2	85+:	2.7	
Households					
Number of households  (2021 Census, rounded to the nearest 100 households)	1,200		155,200		0.77%
Household size	1 person in household	25.5%	1 person in household	30.2%	N/A



## Socio-economic profile 2

Topic	Settlement figure		Borough figure		Settlement share of borough total
(2021 Census, percentage of all households)					
	2 people in household	38.0%	2 people in household	36.4%	
	3 people in household	16.9%	3 people in household	16.1%	
	4 or more people in household	19.5%	4 or more people in household	17.2%	
<b>Household composition</b> (2021 Census, percentage of all households)	One person household	25.5%	One person household	30.2%	N/A
	Single family household	71.0%	Single family household	65.3%	
	Other household types	3.5%	Other household types	4.4%	
<b>Accommodation type</b> (2021 Census, percentage of all households)	Whole house or bungalow	97.5%	Whole house or bungalow	87.4%	N/A
	Flat, maisonette or apartment	2.5%	Flat, maisonette or apartment	11.9%	
	A caravan or other mobile or temporary structure	0.0%	A caravan or other mobile or temporary structure	0.7%	
<b>Number of bedrooms</b> (2021 Census, percentage of all households)	1 bedroom	1.2%	1 bedroom	7.0%	N/A
	2 bedrooms	16.3%	2 bedrooms	23.1%	
	3 bedrooms	47.1%	3 bedrooms	45.7%	
	4 or more bedrooms	35.4%	4 or more bedrooms	24.3%	
<b>Tenure of household</b> (2021 Census, percentage of all households)	Owns outright	42.0%	Owns outright	37.1%	N/A
	Owns with a mortgage or loan or shared ownership	37.9%	Owns with a mortgage or loan or shared ownership	32.4%	
	Social rented	8.5%	Social rented	14.6%	
	Private rented or lives rent free	11.6%	Private rented or lives rent free	15.8%	

## 2 Socio-economic profile

Topic	Settlement figure		Borough figure		Settlement share of borough total
Employment					
<b>Economic activity status</b>  (2021 Census, % of people aged 16 years and over)	Economically active: In employment	58.4%	Economically active: In employment	57.2%	
	Economically active: Unemployed	1.9%	Economically active: Unemployed	2.8%	
	Economically inactive	39.7%	Economically inactive	40.0%	
<b>Employment history</b>  (2021 Census, % of people aged 16 years and over not in employment)	Not in employment: Worked in the last 12 months	12.8%	Not in employment: Worked in the last 12 months	12.3%	
	Not in employment: Not worked in the last 12 months	75.9%	Not in employment: Not worked in the last 12 months	67.3%	
	Not in employment: Never worked	11.3%	Not in employment: Never worked	20.5%	
<b>Occupation</b>  (2021 Census, % of people aged 16 years and over in employment)	Managers, directors and senior officials	18.3%	Managers, directors and senior officials	14.0%	
	Professional occupations	26.3%	Professional occupations	20.5%	
	Associate professional and technical occupations	14.1%	Associate professional and technical occupations	13.2%	
	Administrative and secretarial occupations	7.2%	Administrative and secretarial occupations	8.9%	
	Skilled trades occupations	8.2%	Skilled trades occupations	9.3%	
	Caring, leisure and other service occupations	6.5%	Caring, leisure and other service occupations	8.8%	

## Socio-economic profile 2

Topic	Settlement figure		Borough figure		Settlement share of borough total
	Sales and customer service occupations	6.3%	Sales and customer service occupations	8.2%	
	Process, plant and machine operatives	4.6%	Process, plant and machine operatives	6.9%	
	Elementary occupations	8.6%	Elementary occupations	10.2%	
Travel to work and transport					
<b>Number of cars or vans</b>  (2021 Census, % of all households)	No cars or vans in household	9.1%	No cars or vans in household	16.7%	N/A
	1 car or van in household	38.0%	1 car or van in household	40.8%	
	2 cars or vans in household	39.2%	2 cars or vans in household	32.0%	
	3 or more cars or vans in household	13.6%	3 or more cars or vans in household	10.5%	
<b>Distance travelled to work</b>  (2021 Census, % of people aged 16 years and over in employment)	Less than 10km	24.3%	Less than 10km	32.7%	N/A
	10km to less than 30km	21.2%	10km to less than 30km	18.6%	
	30km and over	4.4%	30km and over	5.2%	
	Works mainly from home	38.5%	Works mainly from home	31.5%	
	Other	11.6%	Other	12.1%	
<b>Method of travel to workplace</b>  (2021 Census, % of people aged 16 years and over in employment)	Work mainly at or from home	38.5%	Work mainly at or from home	31.5%	N/A
	Underground, metro, light rail, tram	0.1%	Underground, metro, light rail, tram	0.1%	
	Train	0.3%	Train	0.8%	
	Bus, minibus or coach	1.3%	Bus, minibus or coach	1.7%	

2

Socio-economic profile

Topic	Settlement figure		Borough figure		Settlement share of borough total
	Taxi	0.1%	Taxi	0.6%	
	Motorcycle, scooter or moped	0.4%	Motorcycle, scooter or moped	0.4%	
	Driving a car or van	50.6%	Driving a car or van	50.8%	
	Passenger in a car or van	3.1%	Passenger in a car or van	3.9%	
	Bicycle	0.4%	Bicycle	2.0%	
	On foot	4.3%	On foot	7.4%	
	Other method of travel to work	0.9%	Other method of travel to work	0.9%	



## Availability of services and facilities 3

### 3 Availability of services and facilities

#### Tarvin Local Retail Centre (May 2023)

**3.1 High Street** - this Local Retail Centre is on High Street to the north of the village, close to the A54. There is much needed convenience retail with a Co-Op that can be accessed via the A54 and the High Street. There is a diverse mix of uses, including leisure with a restaurant, café and pub. Given its location in the village, it is likely that many people pop to the centre when commuting, resulting in a number of cars parked on the street or in car parks, such as the Co-Op. The road is slightly wider than other streets in the village, indicating its importance, however, this is slightly lost through the number of parked cars. Other facilities within the village are dotted elsewhere, including the community centre, library, petrol station with shop, primary school and medical centre. This results in a smaller Local Retail Centre compared with some other villages and provides less opportunities for linked trips. The centre is well maintained and has a low vacancy rate, with a diversity of uses that contribute to the vitality and viability of the centre.

#### Social and community infrastructure

Map 3.1 Tarvin community facilities



3 Availability of services and facilities

Green infrastructure, sport and leisure

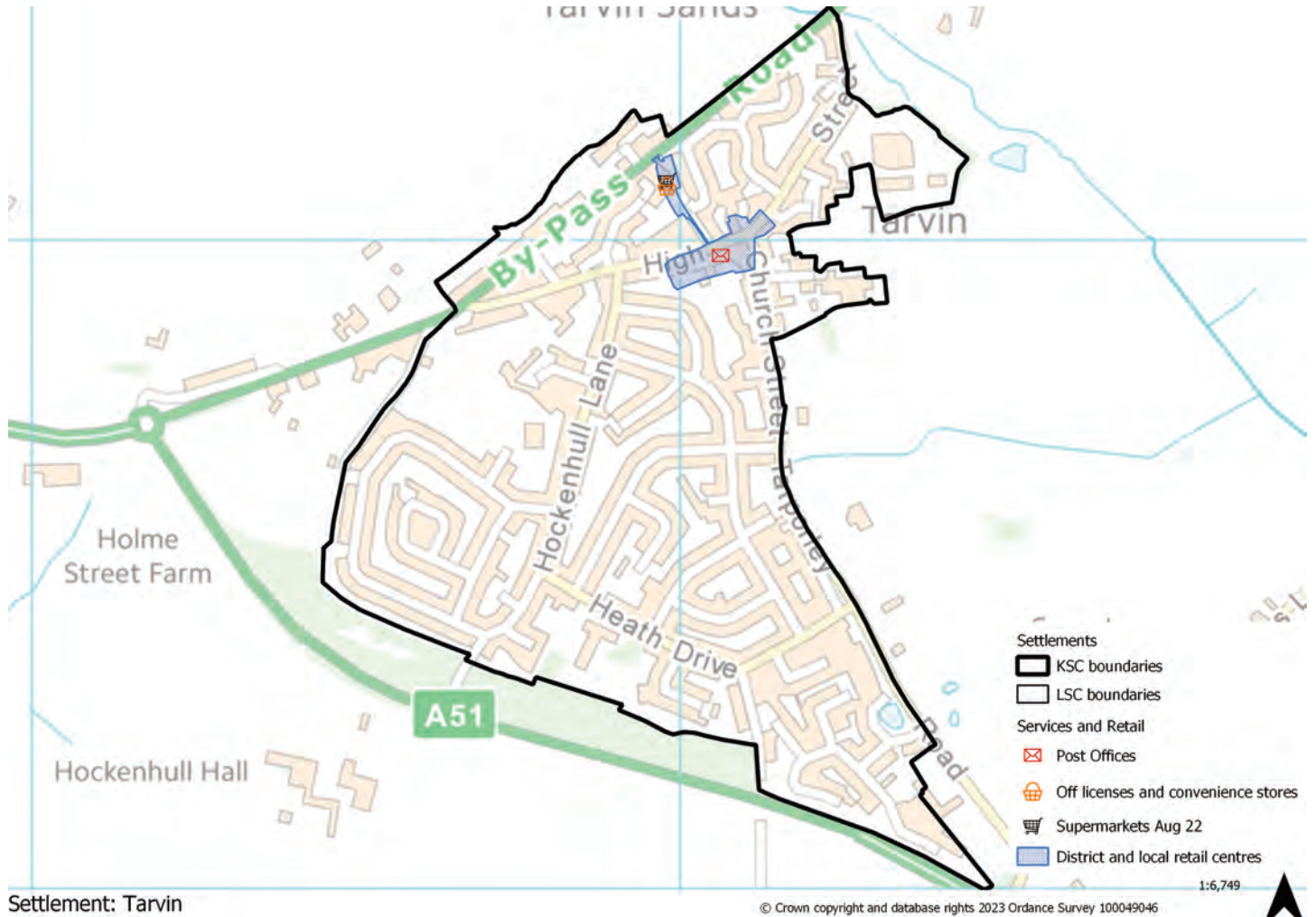
Map 3.2 Tarvin green infrastructure



## Availability of services and facilities 3

## Local retail and services

Map 3.3 Tarvin retail and services





4 Accessibility / access to public transport

4 Accessibility / access to public transport

Map 4.1 Tarvin accessibility

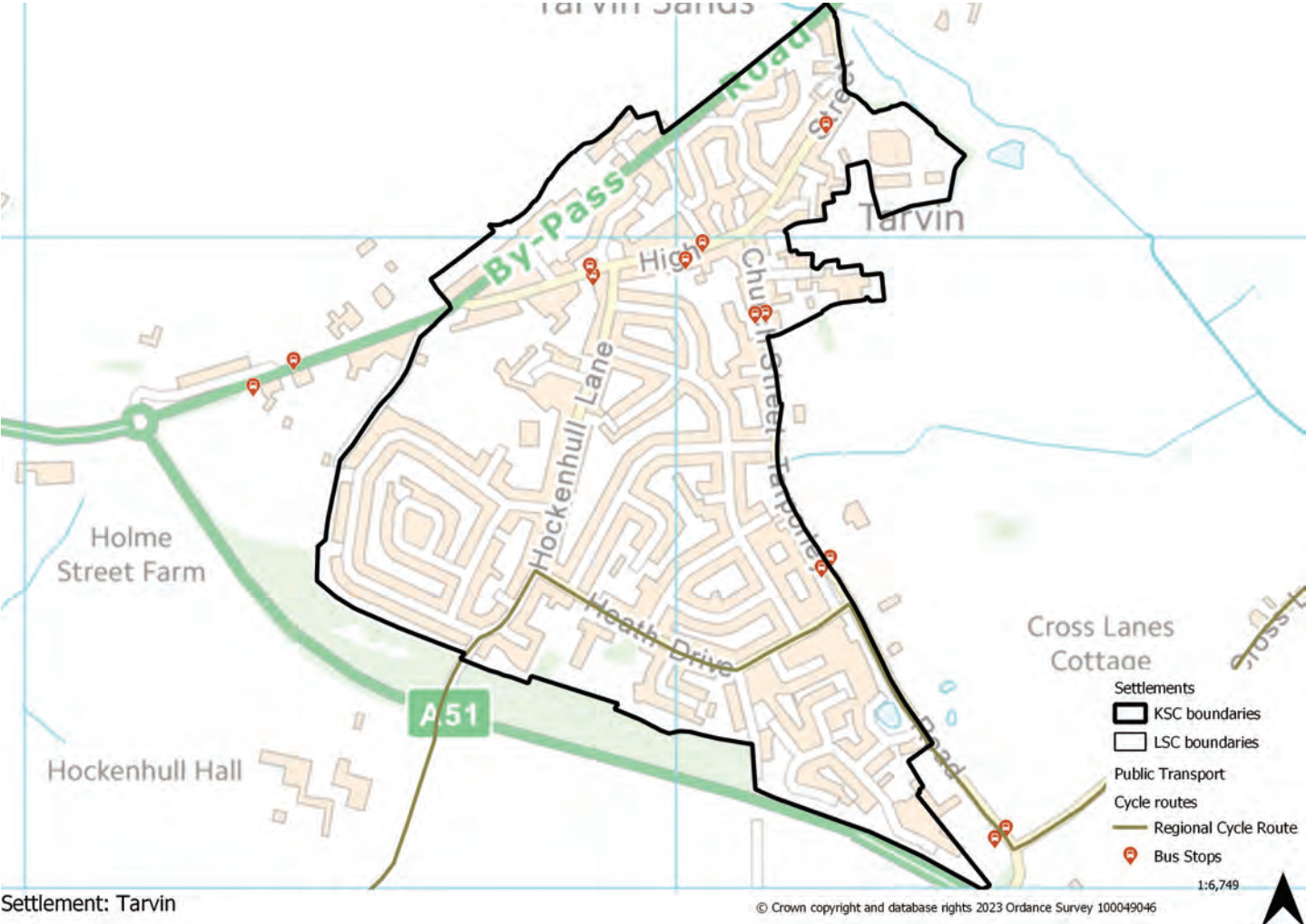


Table 4.1 Distance to other towns/higher order service centres

From Tarvin to:	Distance (approximate miles)	Approximate travel time by bus	Approximate travel time by train	Approximate travel time by bicycle	Approximate travel time by car
Chester	6	24 minutes	N/A	32 minutes	21 minutes
Ellesmere Port	11	1 hour 18 minutes (no direct service)	N/A	51 minutes	20 minutes
Northwich	12	41 minutes	N/A	1 hour 8 minutes	26 minutes
Winsford	12	1 hour 39 minutes (no direct service)	N/A	1 hour 13 minutes	25 minutes

Accessibility / access to public transport 4

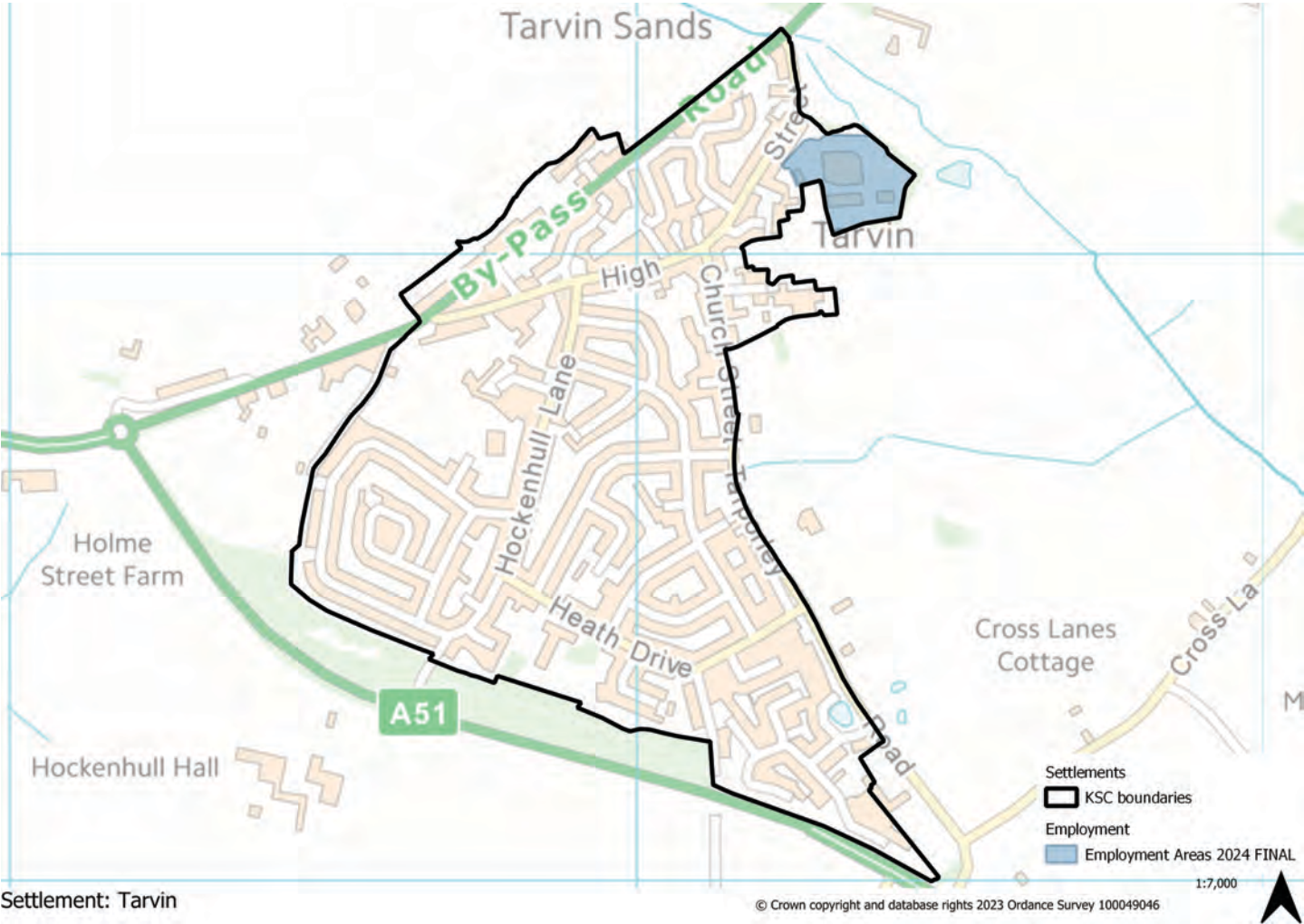
Table 4.2 Frequency of bus services from Tarvin

Bus routes from Tarvin	Days	Frequency
Chester	Daily	1/1 hour and 1/1.5 hour Sunday
Northwich	Mon-Sat	1/1 hour
Crewe	Daily	1/1 hour and 1/1.5 hour Sunday

5 Employment opportunities

5 Employment opportunities

Picture 5.1

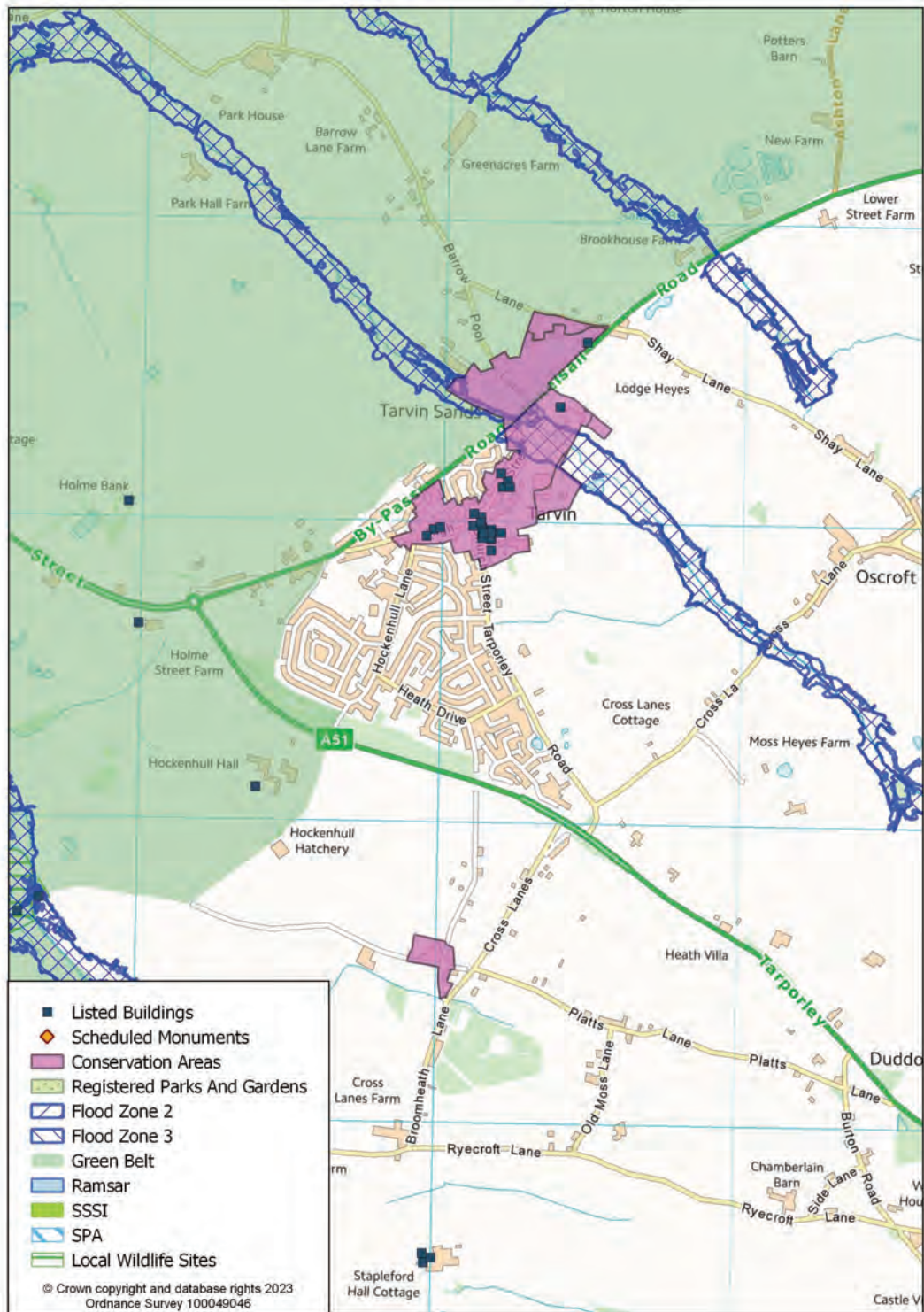




## Constraints - natural / built environment 6

## 6 Constraints - natural / built environment

Map 6.1 Tarvin constraints



## 6 Constraints - natural / built environment

### Landscape Character

Table 6.1 Landscape character assessment

Landscape Character Type	General Description
Cheshire Plain West (Dunham to Tarvin Plain) - surrounds the settlement	This landscape type is defined by its flat or very gentle topography enclosed by hedgerows and standard trees in small-medium enclosures that follow an irregular and semi-regular field pattern. It is differentiated from the Cheshire Plain East by the physical barrier of the Sandstone Ridge. The Dunham to Tarvin Plain LCA falls between the Gowy Valley and Sandstone Fringe LCAs across the north-eastern parts of the Cheshire Plain West LCT. It includes urban fringe area around the south of Stanmore and Elton to the north and includes the free-standing rural settlements of Tarvin, Ashton Hayes and Great Barrow across its south.

## 7 Tarvin profile summary

### Socio-economic profile

- Tarvin is a small settlement located in the centre of the borough and has a 0.76% share of the borough's population.
- The age profile shows that the highest percentage of residents are between 50 and 54.
- There are 1,200 households in the settlement, mostly 3 bedroom houses or bungalows, with the majority being 2 person households owned outright.
- 58.4% of residents are in employment, which is higher than the borough figure. The primary occupation of working residents is professional.
- 39.2% of the households have 2 cars or vans which is higher than the borough average.
- 38.5% of residents work from home which is higher than the borough figure and where they do travel to work the main method is by driving a car or van.

### Availability of services and facilities

- Tarvin has a designated Local Retail Centre on High Street. There is a convenience retail with a Co-Op that can be accessed via the A54 and the High Street. There is a diverse mix of uses, including leisure with a restaurant, café and pub. Other facilities within the village are located away from the retail centre, including the community centre, library, petrol station with shop, primary school and medical centre.

### Social and community infrastructure

- Education – primary school.
- Health – GP practice, dentist, pharmacy.
- Community, culture and entertainment – Library, community centre, Places of Worship, pubs and restaurant.

### Accessibility / access to public transport

- Tarvin is linked to Chester in the west and Winsford and Northwich to the east via the A54. The A51 also provides a link to Tarporley to the south east. An hourly bus service is available to and from Tarvin to Chester and Northwich via Kelsall and Sandiway. An hourly service is also available to and from Crewe via Nantwich.

### Employment opportunities

Table 7.1 Tarvin employment opportunities

Number of jobs (2021)	Economically active (excluding full-time students)	Economically inactive	Jobs less economically active population	Job density
465	1,487	1,052	-1,022	0.31

### Constraints - natural / built environment

- Tarvin is bound to the west by the Green Belt.

## 7 Tarvin profile summary

- There are a number of Listed Buildings within the Conservation Area concentrated in the north of the settlement.
- Areas to the north east of Tarvin are within Flood Zones 2 and 3a (high probability of flooding).