

Places background paper - Tattenhall

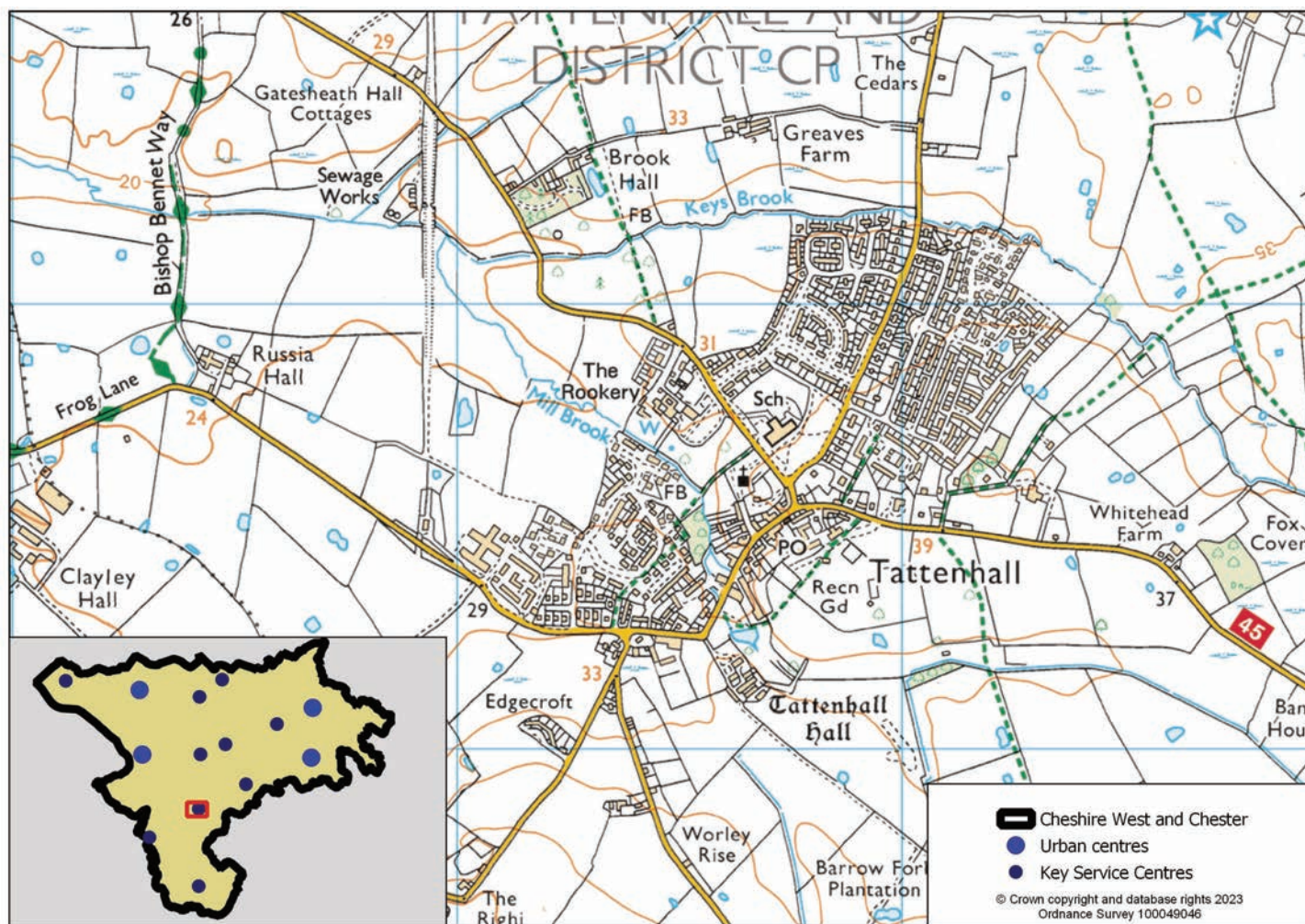
1 Tattenhall	2
2 Socio-economic profile	3
3 Availability of services and facilities	9
Social and community infrastructure	9
Green infrastructure, sport and leisure	10
Local retail and services	11
4 Accessibility / access to public transport	12
5 Employment opportunities	14
6 Constraints - natural / built environment	15
7 Tattenhall profile summary	17

1 Tattenhall

1 Tattenhall

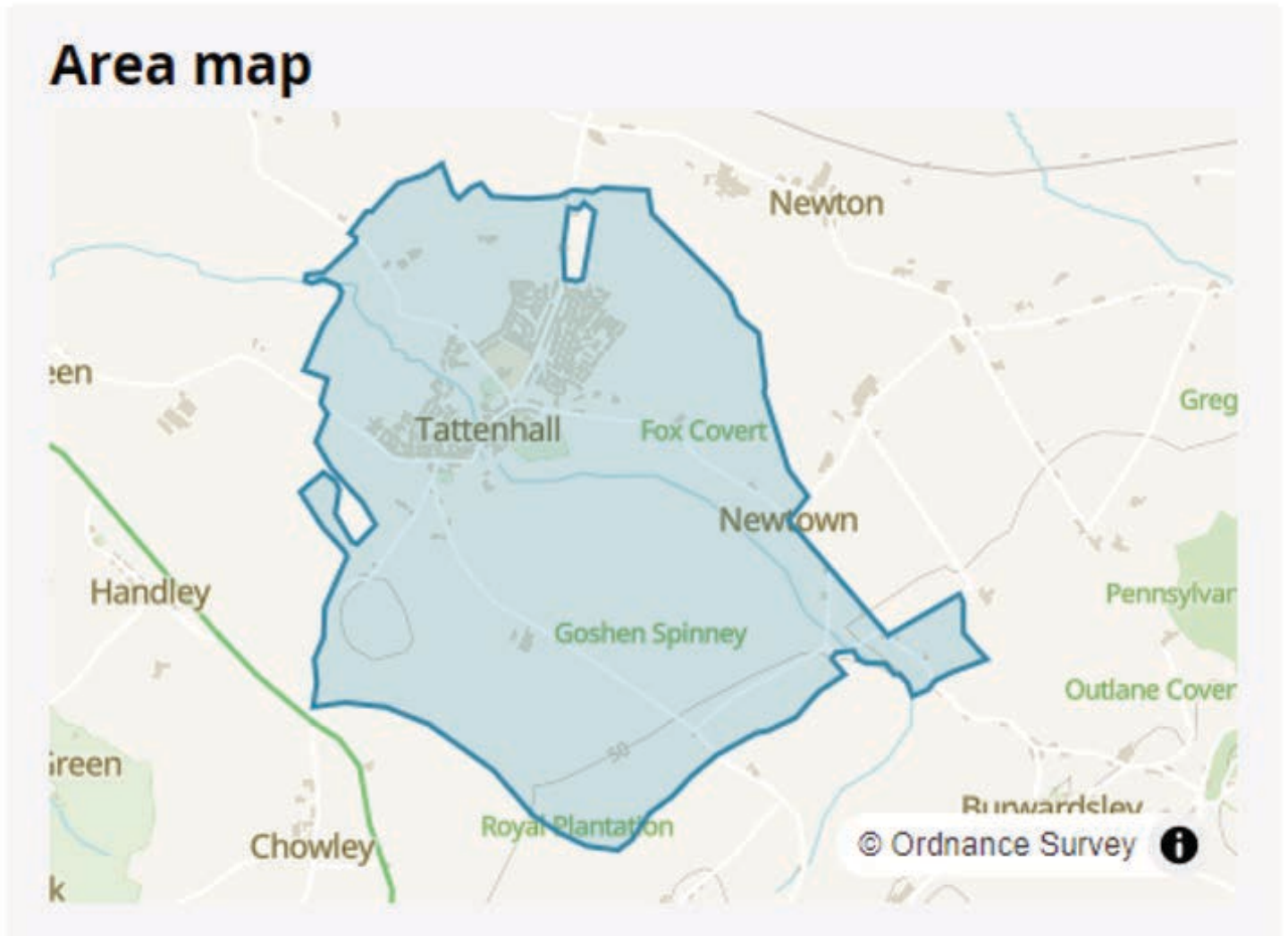
1.1 Tattenhall lies on the Cheshire Plain in the valley between the Sandstone Ridge and the hills of North Wales, and on the watershed separating the Dee and the Mersey.

Map 1.1 Tattenhall location



2 Socio-economic profile

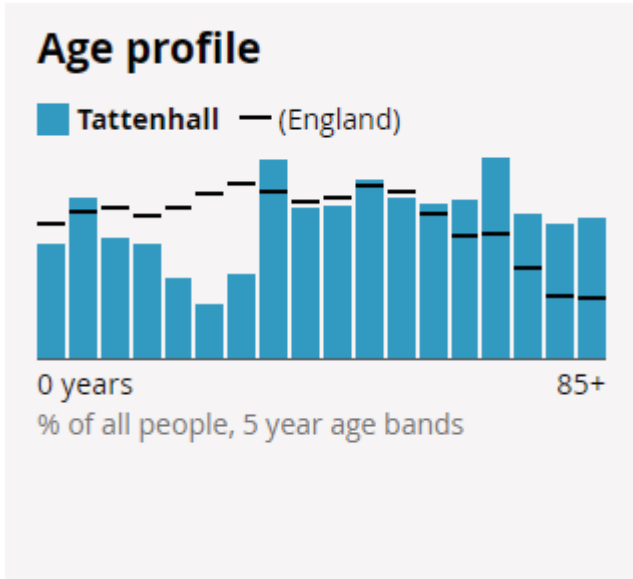
Map 2.1 Tattenhall area map



Tattenhall: ONS – Built up area profile: The data and boundaries displayed in this profile are aggregated from small areas on a best-fit basis, and therefore may differ slightly from other sources: <https://www.ons.gov.uk/visualisations/customprofiles/build/>

2 Socio-economic profile

Table 2.1 Tattenhall socio-economic profile

Topic	Settlement figure		Borough figure		Settlement share of borough total
Population					
Total existing population (Census 2021, rounded to the nearest 100 people)	2,300		357,200		0.64%
Age Profile Picture 2.1  (Census 2021)	Age	%	Age	%	
	0-4:	4.6	0-4:	4.9	
	5-9:	6.4	5-9:	5.6	
	10-14:	4.8	10-14:	5.7	
	15-19:	4.6	15-19:	5.2	
	20-24:	3.2	20-24:	5.5	
	25-29:	2.2	25-29:	5.9	
	30-34:	3.4	30-34:	6.3	
	35-39:	7.9	35-39:	6.3	
	40-44:	6.0	40-44:	5.8	
	45-49:	6.1	45-49:	6.4	
	50-54:	7.1	50-54:	7.3	
	55-59:	6.4	55-59:	7.4	
	60-64:	6.2	60-64:	6.4	
	65-69:	6.3	65-69:	5.6	
	70-74:	8.0	70-74:	5.8	
	75-79:	3.5	75-79:	4.2	
	80-84:	5.8	80-84:	3.0	
	85+:	5.6	85+:	2.7	
Households					
Number of households (2021 Census, rounded to the nearest 100 households)	1,100		155,200		0.71%

Socio-economic profile 2

Topic	Settlement figure		Borough figure		Settlement share of borough total
Household size (2021 Census, percentage of all households)	1 person in household	31.1%	1 person in household	30.2%	N/A
	2 people in household	40.9%	2 people in household	36.4%	
	3 people in household	11.8%	3 people in household	16.1%	
	4 or more people in household	16.2%	4 or more people in household	17.2%	
Household composition (2021 Census, percentage of all households)	One person household	31.4%	One person household	30.2%	N/A
	Single family household	66.7%	Single family household	65.3%	
	Other household types	1.9%	Other household types	4.4%	
Accommodation type (2021 Census, percentage of all households)	Whole house or bungalow	87.5%	Whole house or bungalow	87.4%	N/A
	Flat, maisonette or apartment	12.5%	Flat, maisonette or apartment	11.9%	
	A caravan or other mobile or temporary structure	0.0%	A caravan or other mobile or temporary structure	0.7%	
Number of bedrooms (2021 Census, percentage of all households)	1 bedroom	6.5%	1 bedroom	7.0%	N/A
	2 bedrooms	25.7%	2 bedrooms	23.1%	
	3 bedrooms	38.4%	3 bedrooms	45.7%	
	4 or more bedrooms	29.4%	4 or more bedrooms	24.3%	
Tenure of household (2021 Census, percentage of all households)	Owns outright	42.2%	Owns outright	37.1%	N/A
	Owns with a mortgage or loan or shared ownership	27.3%	Owns with a mortgage or loan or shared ownership	32.4%	
	Social rented	15.0%	Social rented	14.6%	

2 Socio-economic profile

Topic	Settlement figure		Borough figure		Settlement share of borough total
	Private rented or lives rent free	15.4%	Private rented or lives rent free	15.8%	
Employment					
Economic activity status (2021 Census, % of people aged 16 years and over)	Economically active: In employment	51.0%	Economically active: In employment	57.2%	N/A
	Economically active: Unemployed	1.9%	Economically active: Unemployed	2.8%	
	Economically inactive	47.1%	Economically inactive	40.0%	
Employment history (2021 Census, % of people aged 16 years and over not in employment)	Not in employment: Worked in the last 12 months	10.1%	Not in employment: Worked in the last 12 months	12.3%	
	Not in employment: Not worked in the last 12 months	75.6%	Not in employment: Not worked in the last 12 months	67.3%	
	Not in employment: Never worked	14.3%	Not in employment: Never worked	20.5%	
Occupation (2021 Census, % of people aged 16 years and over in employment)	Managers, directors and senior officials	17.2%	Managers, directors and senior officials	14.0%	
	Professional occupations	24.0%	Professional occupations	20.5%	
	Associate professional and technical occupations	13.7%	Associate professional and technical occupations	13.2%	
	Administrative and secretarial occupations	7.8%	Administrative and secretarial occupations	8.9%	
	Skilled trades occupations	9.5%	Skilled trades occupations	9.3%	

Socio-economic profile 2

Topic	Settlement figure		Borough figure		Settlement share of borough total
	Caring, leisure and other service occupations	6.3%	Caring, leisure and other service occupations	8.8%	
	Sales and customer service occupations	6.6%	Sales and customer service occupations	8.2%	
	Process, plant and machine operatives	7.0%	Process, plant and machine operatives	6.9%	
	Elementary occupations	7.9%	Elementary occupations	10.2%	
Travel to work and transport					
Number of cars or vans (2021 Census, % of all households)	No cars or vans in household	12.5%	No cars or vans in household	16.7%	N/A
	1 car or van in household	40.1%	1 car or van in household	40.8%	
	2 cars or vans in household	35.5%	2 cars or vans in household	32.0%	
	3 or more cars or vans in household	11.9%	3 or more cars or vans in household	10.5%	
Distance travelled to work (2021 Census, % of people aged 16 years and over in employment)	Less than 10km	16.8%	Less than 10km	32.7%	N/A
	10km to less than 30km	27.9%	10km to less than 30km	18.6%	
	30km and over	7.3%	30km and over	5.2%	
	Works mainly from home	36.0%	Works mainly from home	31.5%	
	Other	12.1%	Other	12.1%	
Method of travel to workplace (2021 Census, % of people aged 16 years and over in employment)	Work mainly at or from home	35.7%	Work mainly at or from home	31.5%	N/A
	Underground, metro, light rail, tram	0.0%	Underground, metro, light rail, tram	0.1%	

2 Socio-economic profile

Topic	Settlement figure		Borough figure		Settlement share of borough total
	Train	0.1%	Train	0.8%	
	Bus, minibus or coach	0.9%	Bus, minibus or coach	1.7%	
	Taxi	0.1%	Taxi	0.6%	
	Motorcycle, scooter or moped	0.1%	Motorcycle, scooter or moped	0.4%	
	Driving a car or van	52.9%	Driving a car or van	50.8%	
	Passenger in a car or van	2.0%	Passenger in a car or van	3.9%	
	Bicycle	2.2%	Bicycle	2.0%	
	On foot	4.9%	On foot	7.4%	
	Other method of travel to work	1.0%	Other method of travel to work	0.9%	

Availability of services and facilities 3

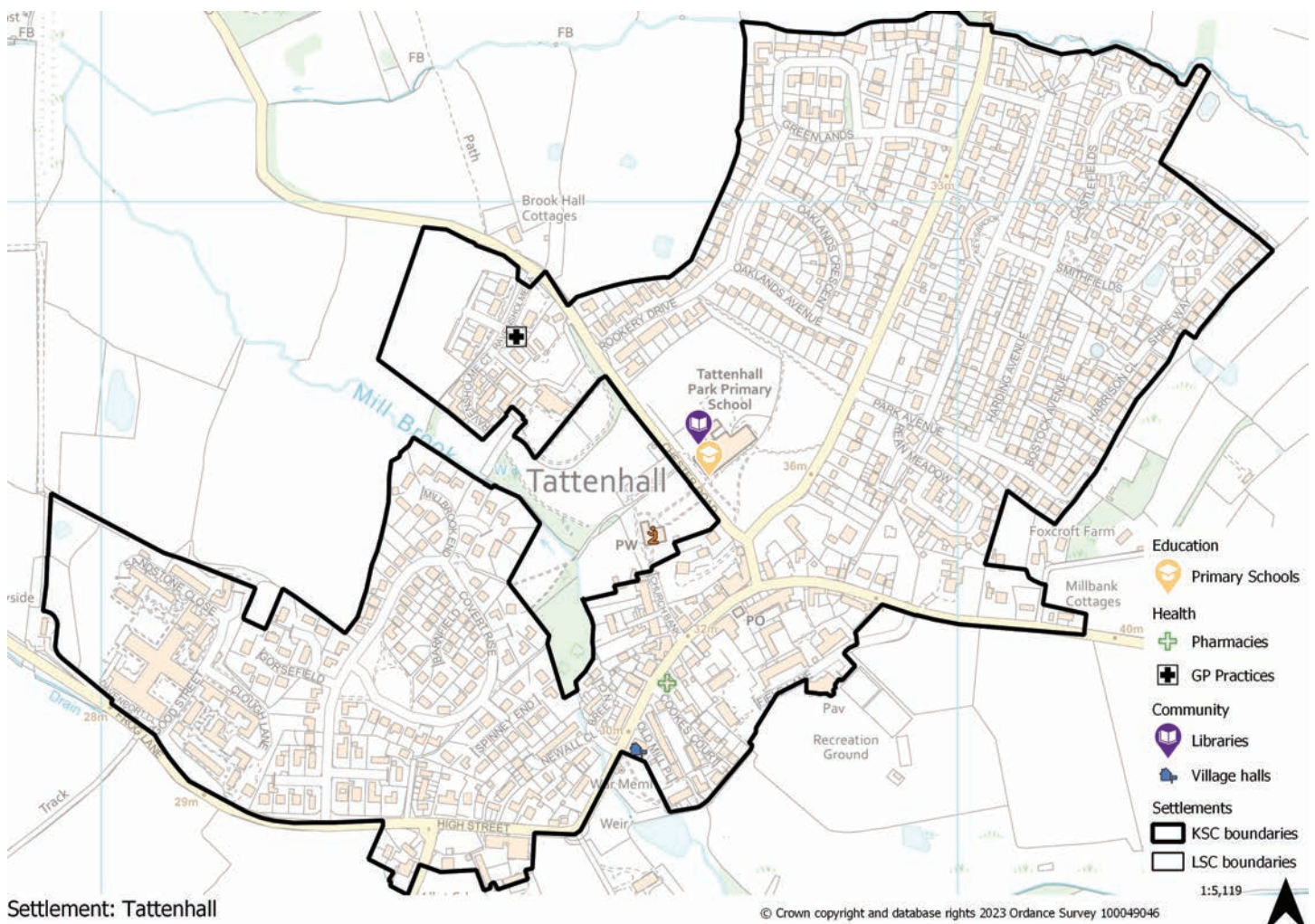
3 Availability of services and facilities

Tattenhall Local Retail Centre (May 2023)

3.1 High Street - this Local Retail Centre is located to the south of the village and is relatively small compared to the size of the village. There is a Spar, a Post Office, nursery and pharmacy to meet the day to day needs of residents and food and drink establishments. Residential is mixed with the commercial uses and the centre has diminished over the years, with closures or change of use. There is a church, doctors, library and primary school close to the Local Retail Centre, however it is unlikely linked trips will be taken due to the lack of facilities and the location of the centre in relation to the houses in the village. The reduction in services and facilities in the centre also has an impact and it is more likely that residents will make trips to other centres to satisfy their convenience needs, most likely using a car. Given Tattenhall is in the rural area, longer distances will need to be travelled to meet their day to day needs. It is most likely that trips will be made to Chester, which is around a 24km round trip.

Social and community infrastructure

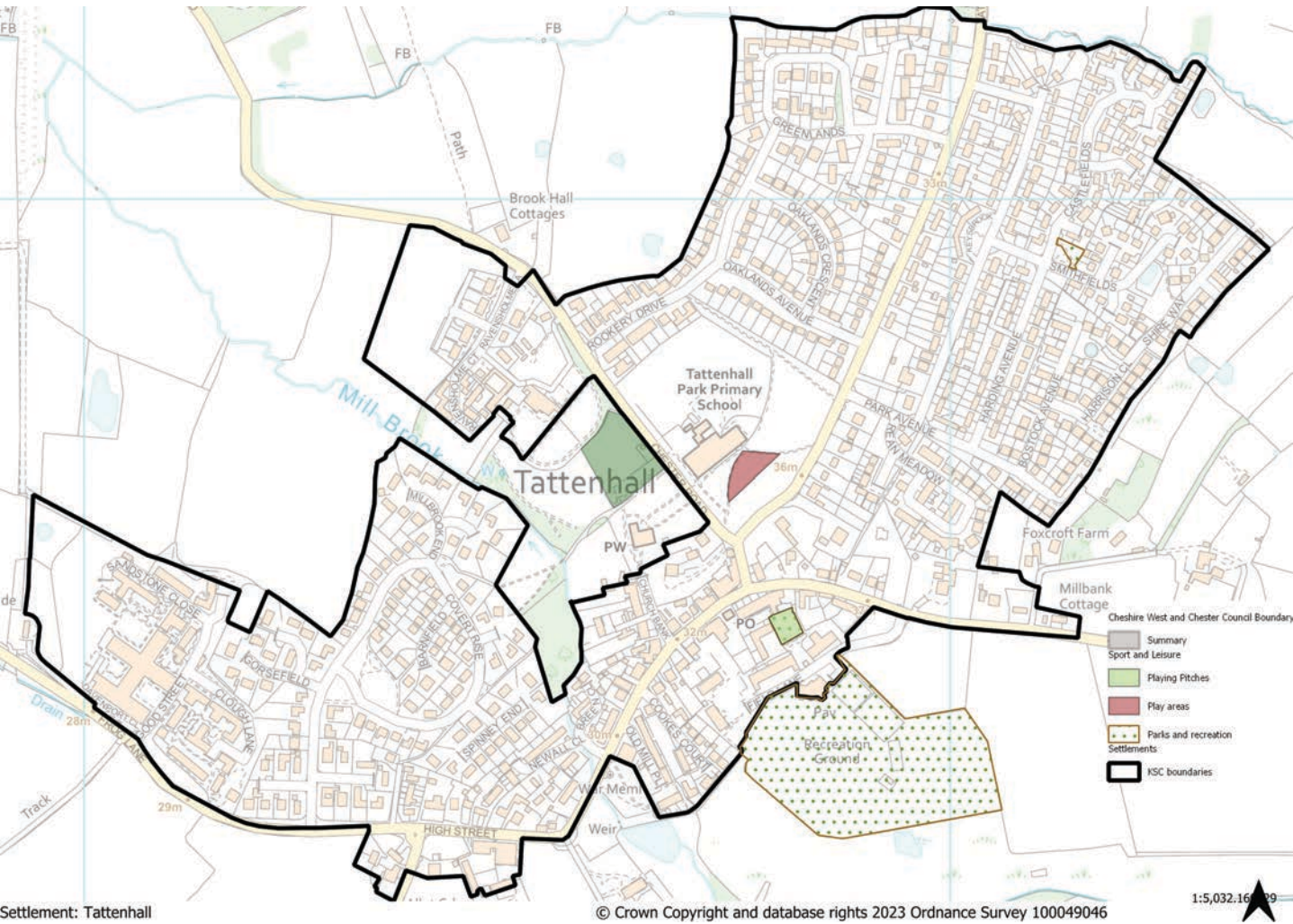
Map 3.1 Tattenhall community facilities



3 Availability of services and facilities

Green infrastructure, sport and leisure

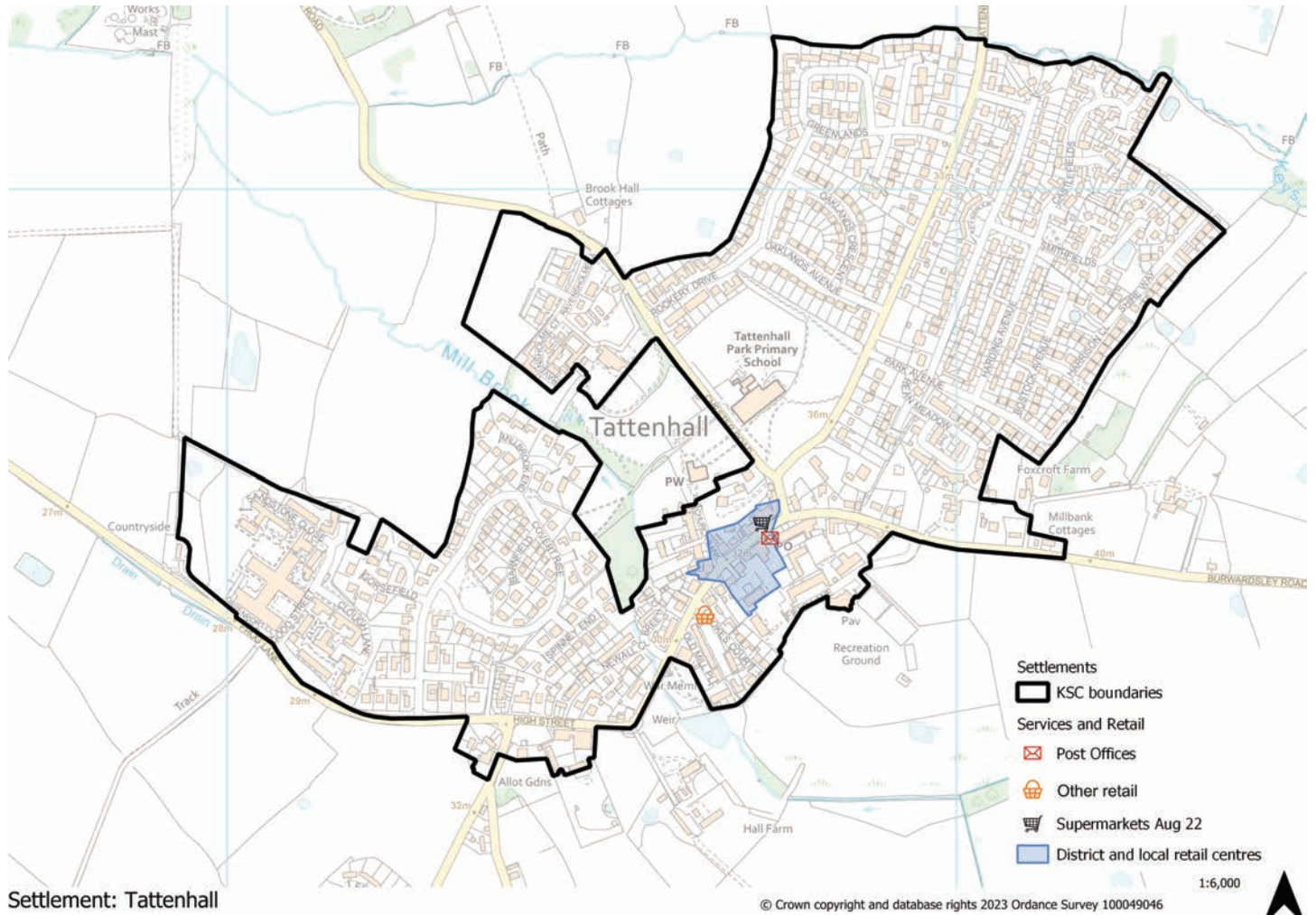
Picture 3.1



Availability of services and facilities 3

Local retail and services

Map 3.2



4 Accessibility / access to public transport

4 Accessibility / access to public transport

Map 4.1 Tattenhall accessibility

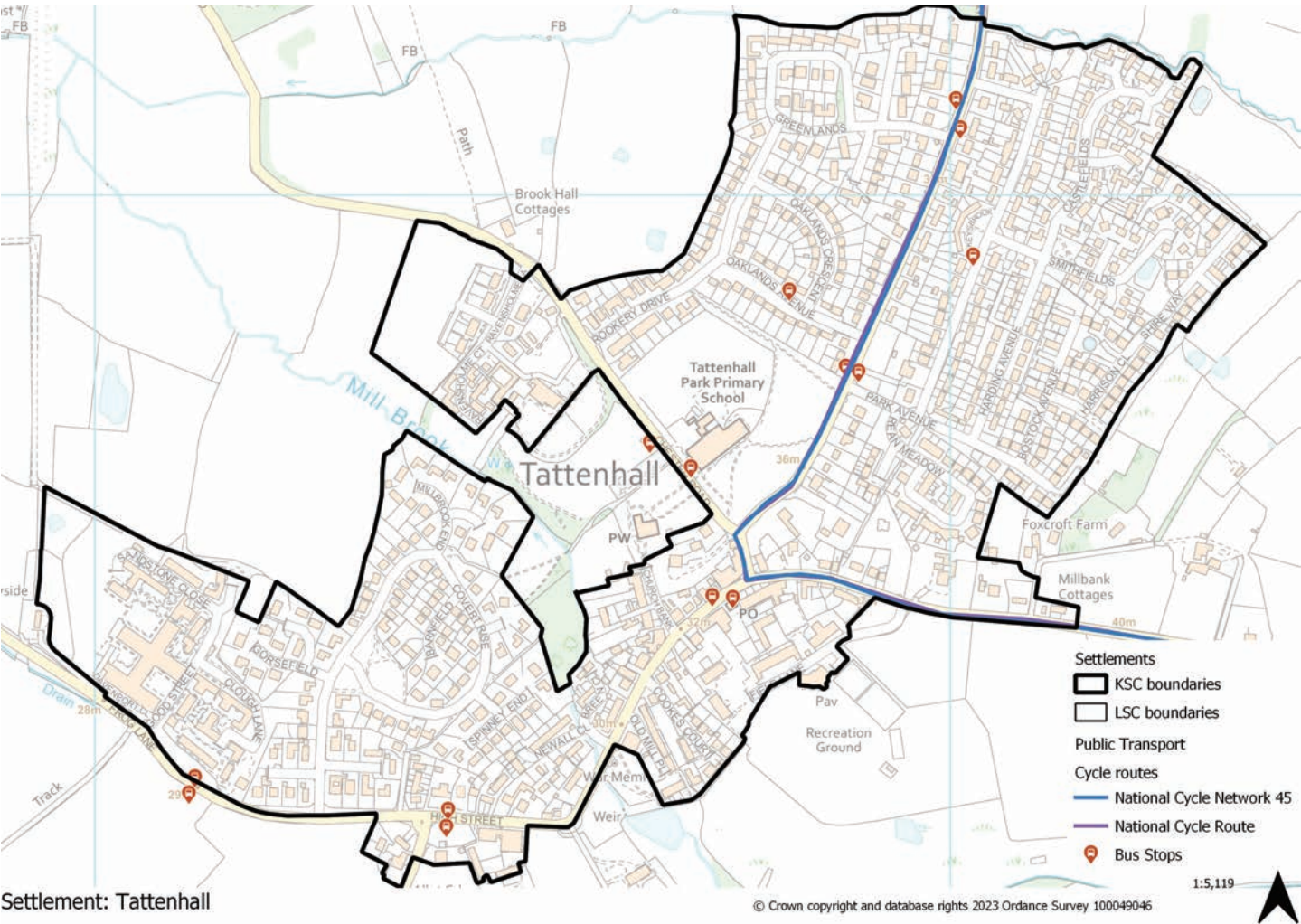


Table 4.1 Distance to other towns/higher order service centres

From Tattenhall to:	Distance (approximate miles)	Approximate travel time by bus	Approximate travel time by train	Approximate travel time by bicycle	Approximate travel time by car
Chester	9	38 minutes	N/A	52 minutes	22 minutes
Ellesmere Port	15	1 hour 31 minutes (no direct service)	N/A	1 hour 25 minutes	25 minutes
Northwich	17	1 hour 44 minutes (bus and train)	N/A	1 hour 37 minutes	36 minutes
Winsford	16	2 hours 44 minutes (no direct service)	N/A	1 hour 19 minutes	32 minutes
Wrexham	13	1 hour 34 minutes (no direct service)	N/A	1 hour 10 minutes	25 minutes

Accessibility / access to public transport 4

From Tattenhall to:	Distance (approximate miles)	Approximate travel time by bus	Approximate travel time by train	Approximate travel time by bicycle	Approximate travel time by car
Whitchurch	13	51 minutes	N/A	1 hour 27 minutes	25 minutes

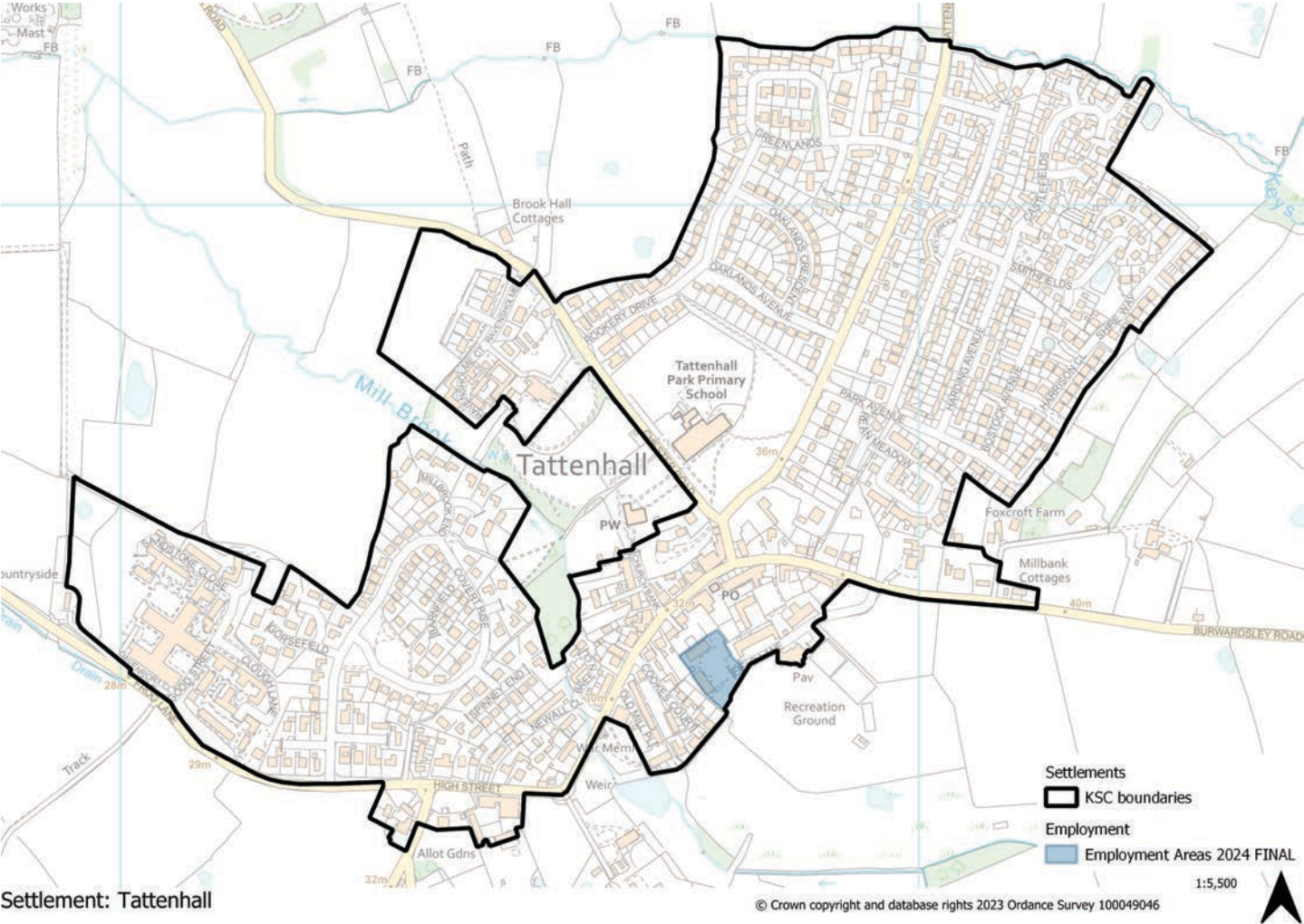
Table 4.2 Frequency of bus services from Tattenhall

Bus routes from Tattenhall	Days	Frequency
Whitchurch	Mon-Sat	2/1 hour
Chester	Mon-Sat	1/1 hour

5 Employment opportunities

5 Employment opportunities

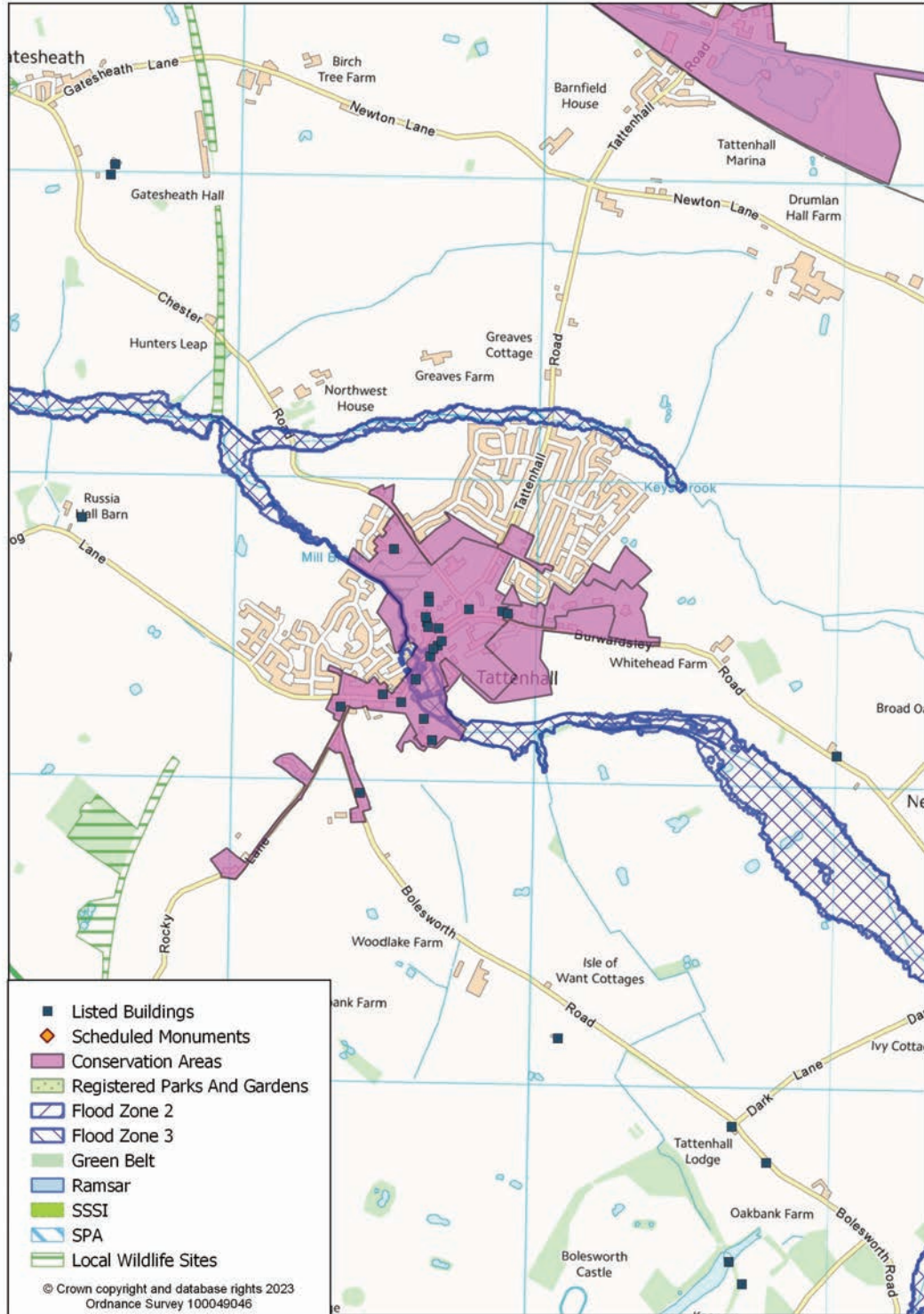
Picture 5.1



Constraints - natural / built environment 6

6 Constraints - natural / built environment

Map 6.1 Tattenhall constraints



6 Constraints - natural / built environment

Landscape Character

Table 6.1 Landscape character assessment

Landscape Character Type	General Description
Cheshire Plain West (Tattenhall to Shocklach Plain to south and Hargrave, Hoofield & Beeston Plain to north)	This character type dominates a large proportion of CWaC, and as such it has been broken down into four character areas which reflect the subtle variations that exist in the landscape. This landscape type is defined by its flat or very gentle topography enclosed by hedgerows and standard trees in small-medium enclosures that follow an irregular and semi-regular field pattern. It is differentiated from the Cheshire Plain East by the physical barrier of the Sandstone Ridge.

Tattenhall profile summary 7

7 Tattenhall profile summary

Socio-economic profile

- Tattenhall is a small settlement located to the south of the borough and has a 0.64% share of the borough's population.
- The age profile shows that the highest percentage of residents are between 70 and 74.
- There are 1,100 households in the settlement, mostly 3 bedroom houses or bungalows, with the majority being 2 person households owned outright.
- 51.0% of residents are in employment, which is lower than the borough figure. The primary occupation of working residents is professional.
- 40.1% of the households have 1 cars or vans which is only 0.75% lower than the borough average.
- 36.0% of residents work from home which is higher than the borough figure and where they do travel to work the main method is by driving a car or van.

Availability of services and facilities

- The High Street in Tattenhall is designated as a Local Retail Centre. There is a Spar, a Post Office, nursery and pharmacy to meet the day to day needs of residents and a couple of food and drink services. Residential is mixed with the commercial uses and the centre has diminished over the years, with closures or change of use. There is a church, doctors, library and primary school close to the Local Retail Centre.

Social and community infrastructure

- Education – primary school.
- Health – GP practice and pharmacy.
- Community, culture and entertainment – library, village hall, Place of Worship, pub.

Accessibility / access to public transport

- Tattenhall lies to the east of the A41 which provides direct access to Whitchurch to the south and Chester to the north. There is a bus service every 2 hours to Whitchurch via Malpas and one to Chester. No rail services are available in Tattenhall.

Employment opportunities

Table 7.1 Tattenhall employment opportunities

Number of jobs (2021)	Economically active (excluding full-time students)	Economically inactive	Jobs less economically active population	Job density
1,815	2,051	1,525	-236	0.88

Constraints - natural / built environment

- Tattenhall has an extensive Conservation Area in the centre of the village which includes a number of Listed Buildings. Areas to the north and south east of Tattenhall are within Flood Zone 3a (high probability of flooding). A Local Wildlife Site is also located in the centre of the village.