

# Hartford's Neighbourhood Plan

**Consultation Statement**

---



# Contents

---

1	<b>INTRODUCTION</b>	page 4
2	<b>BACKGROUND</b>	page 4
3	<b>HISTORY</b>	page 5
4	<b>FIRST STAGE COMMUNITY CONSULTATION EVENTS</b>	page 6
4.1	Public Meeting	
4.2	Workshop	
4.3	Village Stall	
4.4	Victorian Christmas Fayre 2012	
4.5	Census data	
4.6	Questionnaires	
4.7	Picnic in the Park	
4.8	Open Day (October 2013)	
5	<b>SECOND STAGE COMMUNITY CONSULTATION EVENTS</b>	page 11
5.1	Victorian Christmas Fayre 2013	
6	<b>CONSULTEES</b>	page 12
7	<b>MAIN ISSUES AND HOW THE PLAN ADDRESSES THEM</b>	page 12
8	<b>APPENDICES</b>	page 14

This Consultation Statement and the supporting consultation reports are considered to comply with Section 15(2) of part 5 of the 2012 Neighbourhood Plan Regulations.

# 1 Introduction

---

1.1 The Hartford Neighbourhood Plan is the culmination of two years' work and community consultation by Hartford Neighbourhood Plan Working Group (NPPWG).

The first section of this consultation document took place prior to The Secretary of State for Communities and Local Government, Mr Eric Pickles' decision to allow the development of 650 dwellings in the village.

The latter section relates to consultation from the community once this decision was made on 18 November 2013.

1.2 This Consultation Statement builds on the work of the Hartford HNPWG and is designed to meet the requirements for such a statement as set out in the Neighbourhood Planning (General) Regulations 2012. It summarises the community consultation process that was undertaken in producing the Hartford Neighbourhood Plan and shows how the requirement of Regulations 14 and 15 of the Neighbourhood Planning (General) Regulation 2012 have been satisfied.

1.3 Regulation 15(2) of the Neighbourhood Planning (General) Regulation 2012 requires a Consultation Statement which:

- (a) contains details of the persons and bodies who were consulted about the proposed Neighbourhood Development Plan;
- (b) explains how they were consulted;
- (c) summarises the main issues and concerns raised by the person consulted;
- (d) describes how these issues and concerns have been considered and, where relevant, addressed in the proposed Neighbourhood Development Plan.

1.4 This version will be added to once the statutory (Regulation 14) consultation period of the Draft Neighbourhood Plan is complete and the Plan has been amended appropriately. The final version will then fully meet the above requirements.

# 2 Background

---

2.1 At the monthly parish meeting in February 2012, Hartford Parish Council resolved to produce a Neighbourhood Plan for Hartford.

2.2 Members of Hartford Parish Council and Hartford Civic Society met on 8 June 2012 with the common interest of producing a Neighbourhood Plan (NP) for Hartford. A terms of reference and a vision statement were agreed, a working group comprising four parish councillors and four civic society committee members was formed, a minute secretary was appointed and various community experts were co-opted to assist in the production of a Neighbourhood Plan for Hartford.

*(see Appendix 8.1: Terms of reference and Appendix 8.2: Vision Statement)*

In July 2012 the Hartford Parish Council (HPC) submitted an application to Cheshire West and Chester Council (CW&C) to be a designated body to produce a Neighbourhood Plan. A statement explaining the area and a map defining the parish accompanied the application.

The request was validated by CW&C and advertised on Wednesday 19th August with a six week period for comment until the 10th October 2012.

Following this consultation with all adjoining Parishes, stakeholders and the community, Hartford Parish Council's request was designated by CW&C on 6 March 2013.

*(see Appendix 8.13: map of the Parish of Hartford)*

## 3 History

---

**3.1** Hartford has had a history of participation in processes intended to help shape the future of the village. It commented on the extension of its Conservation Area in 2004, produced a Parish Plan in November 2004 and a Village Design Statement in January 2005. The Parish Plan can be viewed at [www.hartfordparishcouncil.org.uk](http://www.hartfordparishcouncil.org.uk) and The Village Design Statement can be viewed at [www.hartfordcivicsociety.org.uk](http://www.hartfordcivicsociety.org.uk)

The monthly newsletter *Hartford News* (first published in October 1973) informs and shares information amongst residents and is available free from a number of village outlets. The Parish Council has had a website since 2005, on which it publishes the minutes of its meetings and where *Hartford News* can be down loaded if required. *Hartford News* also uses Facebook and Twitter to receive comments and to communicate with the community.

*(see Appendix 8.14: map showing the Conservation Area)*

**3.2** In July 2011 Harrow Estates consulted on their proposal to build 300 dwellings on Grange Farm, an area of grade one agricultural land, in the centre of the village but outside the settlement boundary.

Also in September, 2011 Bridgemere Land plc and Bridgemere JV Ltd. consulted on their proposal to develop 350 dwellings on land east of School Lane (The Hollies). This open countryside adjacent to the River Weaver Valley has the protection of an Area of Significant Local Environmental Value (ASLEV.) again outside the settlement boundary.

**3.3** Both applications were rejected by Cheshire West and Chester's Strategic Planning Committee at its meeting on 31 May 2012. The Committee under their powers of the Town and Country Planning Act 1990 refused the applications for the following reasons:

- The development proposals would have a severe impact on the highway network. It is considered that the mitigation measures proposed are insufficient to overcome such impact. Accordingly, the proposal is contrary to the provision of the National Planning Policy

Framework and Policy T1 of the Vale Royal Borough Local Plan First Review Alteration 2006:

- Insufficient information has been provided relating to the transport impact that the proposed developments would have on the Northwich Vision Area. Accordingly, the proposal is contrary to Policy GS9P of the Vale Royal Borough Local Plan First Review Alteration 2006.

This second reason for refusal was withdrawn at a later date.

Cheshire West and Chester Council was subsequently taken to an inquiry by the developer in December 2012.

Widespread consultation revealed major concerns and opposition to these developments which led to the formation of a Joint Action Group (JAG) which was granted Rule 6 Status and represented the community in their opposition to the proposed development of 650 houses which would increase the population by 30%.

Both applications were called in by the Secretary of State for Communities and Local Government, Mr Eric Pickles and it was not until 18 November 2013 that the Secretary of State made his decision to allow both developments to go ahead.

**3.4** In stage one, from July 2012 until the decision in November 2013, all collation of research and consultation evidence towards producing a draft Neighbourhood Plan for Hartford had been focused on the evidence that has been received from the community.

This clearly reflected the views of the residents in that there was a need for properties suitable for our ageing population as well as for more modest size properties that younger people could afford.

The community felt that any large developments would have severe traffic implications and would not ensure that the village would be sustainable for the future.

Whilst not opposed to development, the community felt that smaller developments spread around the village would meet this criteria.

This evidence from the community was supported by the census results of 2011 which confirmed that Hartford had a very low age range in the 24-35 year olds and an above national average of

older residents. Statistics available also state that people are living longer and that there is a desperate need for housing suitable for the older generation.

This information was built into Hartford's first draft Neighbourhood Plan and reflects the comments received from residents in this consultation statement.

### Meeting with Housing Minister Nick Boles

3.5 The HNPWG met with Housing Minister Nick Boles on 7 October 2013 and Hartford's Draft Plan, that was formulated on evidence and consultation with the community, was presented to him.

The Draft Plan highlighted the need for some low cost housing for younger members of the community but also the overriding need for accommodation that would be suitable for older home owners to down size and to also accommodate residents at a later stage in their lives.

His response was very enthusiastic and reassuring as he accepted that all communities had a growing ageing population as people were living longer and he felt that people should be able to end their days in suitable accommodation.

He shared the fact that he was considering modifying the NPPF to include a percentage of housing for the elderly in every planning application received by a Council.



Graham Evans MP (left), Nick Boles MP (centre) and members of the Working Group

## 4 First stage community consultation events

### Community consultation events that took place prior to the first draft

#### 4.1 PUBLIC MEETING

On 4 July 2012, a public meeting was held in the theatre of the Grange School.

The aim of exhibiting the proposed Neighbourhood Plan at the event was to raise public awareness of the proposed Hartford Neighbourhood Plan and collect the initial views of the local community.

The event comprised an introduction by the Chair of the Neighbourhood Plan Working Group explaining the purpose of a Neighbourhood Plan followed by a comprehensive slide presentation that introduced how a plan for Hartford could influence the way in which the village could develop in the future.

An open session gave the opportunity to discuss ideas and invited comments.

#### Who was consulted?

One hundred and sixty nine people attended and they unanimously supported the proposal to produce a Neighbourhood Plan for Hartford.

#### How people were consulted

The consultation event on 4 July was publicised in the following ways:

- *Hartford News*
- Local press
- Leaflet drop to every household
- Posters
- JAG website
- Parish Council notice boards

#### What did the consultees say?

The overwhelming consensus emerging from the feedback at this initial consultation event was that

a Neighbourhood Plan would be a positive tool for the local community.

It was agreed that the key issues identified the main concerns of residents and all comments were recorded and if they were relevant used in the production of the Plan.



Seventy six of the attendees (twelve couples and fifty two individuals) completed the questionnaire.  
(see Appendix 8.3: Comments from 4 July meeting)

#### 4.2 WORKSHOP

A workshop was held in the Village Hall on 6th August 2012.

The aim of the workshop was to progress the key issues that had been identified at the public meeting, appoint a mentor from the HNPWG to head each group and recruit members of the community with special expertise, interest or knowledge of each key issue to be part of a working group.

##### Who was consulted and how?

All attendees at the Open Meeting on 4 July were invited to the workshop.

Invitation to all members of the community in *Hartford News*.

Personal invitations to members of the community with special skills who were known to the HNPWG.

##### What did the consultees say?

Those who attended submitted their thoughts and ideas and it was agreed that a website should be created.

#### 4.3 VILLAGE STALL

The next community involvement event was on 8 September 2012, when a stall was manned in the village and a questionnaire printed in *Hartford News* sought resident's views about Hartford.

##### Who was consulted?

All residents of Hartford who shopped in the village on that day.

##### How people were consulted?

All mentors were available to speak to residents, share the key issues and record likes and dislikes along with concerns.

##### The main issues and concerns raised by the people consulted.

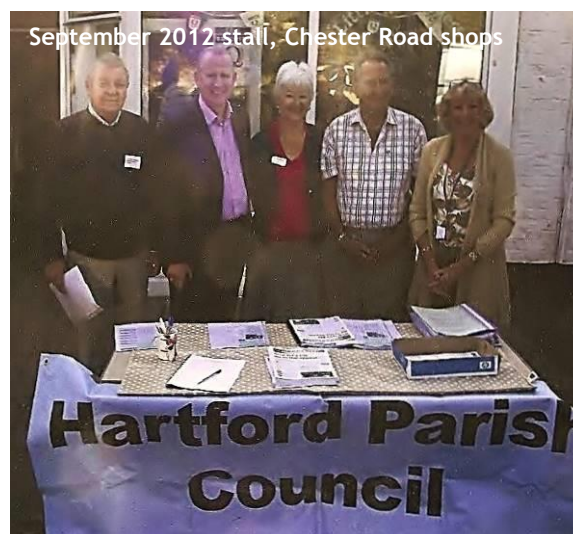
Hartford is a nice place to live.

They valued the green open spaces and abundance of mature trees.

The village feel was important as was the protection of the conservation area and Marshall's Arm and the Weaver Valley.

There was great concern about over-development that would threaten the sustainability of the village for future generations.

However the main concern was of severe traffic congestion at peak times of the day due to Hartford having ten educational establishments within its boundary.



(see Appendix 8.4: Hartford News Questionnaire)

#### 4.4 VICTORIAN CHRISTMAS FAYRE

There was a delay in the work of the HNPWG between the last event in September and the Victorian Christmas event on 1 December 2012, because members of the group, who were also members of Hartford JAG, were involved in the appeal about the Grange Farm and Hollies Farm sites. There was also concern that the work of the HNPWG might be overruled by a central government decision.

##### Who was consulted?

The Victorian Christmas in Hartford is a major event that has grown over the past three years to become a Christmas feature that attracts hundreds and hundreds of residents.

The event was well advertised in the *Hartford News*, the *Northwich Guardian* and by posters in the village as well as all organisations being involved spreading the event to all their members.

It is difficult to put a number on the residents consulted as so many attended the event. However, there was not a time in the day when the stall was not surrounded by members of the community wishing to know more about Hartford's Neighbourhood Plan and making comments.

##### How they were consulted

The stall was manned by members of the HNPWG who were on hand to answer questions and receive comments.

The availability of information in the form of maps, illustrated pictures and key issues that could be discussed in face to face exchanges was very much appreciated by members of the public who could then make comments.

Any issues or concerns from the community were fully considered in further development of Hartford's Neighbourhood Plan.

#### 4.5 2011 CENSUS DATA

4.5.1 On 30 January 2013 valuable census data for the HNPWG was released by the Office for National Statistics (the ONS). This obviated the need for certain questions in the planned questionnaire to residents and businesses.

4.5.2 In March 2013, *Hartford News* shared some of the more interesting and unusual

statistics about Hartford obtained from the census data with residents.

(see Appendix 8.5: Census information in Hartford News)

#### 4.6 QUESTIONNAIRES

In an effort to ensure that all sections of the community had the opportunity to express their views three questionnaires were delivered to a variety of different members of the community.

##### 4.6.1 Household questionnaire

During the week of 5 July 2013 every household (a total of 2,378 households) in Hartford received a comprehensive questionnaire through the post accompanied with a pre-paid return envelope for comments. This means of delivery, and the encouragement it provided to respond, and the evident strength of feeling that was made clear, were instrumental in generating a high level of response to the questionnaire; more than 700 (over 30%) of the survey forms were returned.

The survey (feedback about which was published in detail in the September 2013 edition of *Hartford News*) made clear the prevailing opinions of a large proportion of the village. Characteristics (including green spaces, trees, and the village environment) that are valued and should be preserved were identified; traffic issues (including congestion and difficulties with parking) were among the most frequently cited concerns. Residents also made clear their views about the ways in which Hartford should develop.

(see Appendix 8.6: Household questionnaire)

##### 4.6.2 Business questionnaire

The following week, 12 July 2013, the second questionnaire that related to the business sector of the village was delivered to shops and identified businesses to gain their views on how they would like Hartford to progress in the future.

The feedback from the shops and business questionnaire established stability in the present shops of many years of retailing in the village. This was attributed to the mix of services provided, the support received from the community and a relationship with the village.

There was general consensus that more development in Hartford could increase trade but

if the over-riding problem of parking was not addressed then there would be no benefit.

Parking and traffic were identified as the main concerns. Delivery of goods was difficult and, due to very limited on street parking, potential customers did not stop to shop but went on to other areas.

Units in the small business centre also identified traffic as a major issue in getting to the centre and expressed concerns as to the impact of further development on the highway network.

It was reported (in the *Northwich Guardian*) that one employer had moved his business out of Hartford due to traffic difficulties for staff getting to their place of work.

(see Appendix 8.7: Business questionnaire)

#### 4.6.3 Schools and students questionnaire

Again on 12 July 2013 a questionnaire, geared towards younger members of the community, was delivered to all of the ten educational establishments within the village with requests for comments not only by the head of each establishment but more importantly the pupils and students.

The feedback from the headteachers of the schools that responded to the survey reflected the present status of their schools and how they perceived future trends.

Continuing improvements to school buildings and very good and excellent results ensured that standards were high. Because of these high standards and the diversity of educational needs that were available it was felt that there would be a limited number of places available for more pupils.

The main concern was that evidence indicated that there was a shortage of available places in most schools in the Northwich area and, with the proposed development in Hartford, added to additional large developments outside the Parish there would be a need for expansion to the Hartford schools. Concerns were also voiced regarding school transport and the number of students and pupils that travelled to school by car.

The students and pupils that responded supported the fact that so many of them lived outside of Hartford and with little public transport it was necessary to use the car to get to school or college

as it was too far to cycle or walk. All students and pupils indicated they liked living, or going to school in Hartford as it was a nice village. Many used the shops and community and sports facilities. Concerns were the comparative lack of facilities for young people.

(see Appendix 8.8: Schools and students'questionnaire)

## 4.7 PICNIC IN THE PARK

On 14 July 2013, the annual Picnic in the Park, organised by the Parish Council took place in the Grange Park recreation ground.

### Who was consulted?

This is a very popular village event that attracts hundreds of residents especially with families.

The picnic in the park event was an excellent opportunity to consult with young people as well as older members of the community.

### How were people consulted?

Members of the HNPWG once again manned a stall, organized a competition, gave out complimentary balloons to children advertising



the Neighbourhood Plan and, with maps and details of Hartford's proposed Neighbourhood Plan spoke and informed the community of progress and invited their comments.

### What did the consultees say?

The consultees agreed with the six key issues as being the main reasons for concern for them. Any further comments were recorded and relevant amendments made to the draft Neighbourhood Plan.

#### 4.8 OPEN DAY 12 OCTOBER 2013

An Open Day was organised on 12 October 2013 in the Village Hall.

The aim of the event was to consult with stakeholders and the community on Hartford's



first draft Neighbourhood Plan which was prior to the decision by the Secretary of State.

##### Who was consulted?

One hundred and fifty members of the public attended the Open Day along with representatives of stakeholders and those with an interest in Hartford.

##### How were people consulted?

Considerable advertising was undertaken to inform on the event.

- Information in *Hartford News* and the local Press.
- Posters around the village.
- Two prominent banners in the centre of the village.
- A leaflet drop to every household.
- Hartford Neighbourhood Plan web site.



Members of the HNPWG were available to speak individually to all those who attended.

- An exhibition of key issues, community concerns and proposed policies were displayed.

##### What did the consultees say?

The consultees felt that the draft proposal in the Neighbourhood Plan met the needs of the community for future development without creating more traffic at peak times of the day.

Comments were received on the topic feedback form, which were subsequently analysed and, where necessary, policies modified accordingly.

## 5 Second stage community consultation events

### Community consultation events that took place after the first draft

Following the decision by the Secretary of State in November 2013 Hartford's Neighbourhood Plan was amended to include the development of 650 houses within the village.

This has involved fresh community involvement and consultation with residents.

#### 5.1 VICTORIAN CHRISTMAS FAYRE

A revised Draft Plan and a very large scale map detailing where the new development of 650 dwellings were situated was available on a stall at the well-attended Victorian Christmas event held in the village's main street and the Church Centre on 7 December 2013.

#### Who was consulted?

The Victorian Christmas is a very popular event in the village and attracts hundreds of residents, their families and friends.

This enabled the HNPWG to consult with a wide cross section of the community.

#### How were people consulted?

Members of the HNPWG were in attendance to speak directly and inform residents how two large developments would influence the first draft Neighbourhood Plan's policies.

The group was also able to show ideas and possibilities for the protection of Hartford, and its development in social, economic and environmental terms for the future following the Secretary of State's decision.

#### What did the consultees say?

There was great dismay and concern from an enormous number of residents as to the decision made by the Secretary of State as they felt that Hartford could not be sustainable with the addition of 650 houses.

The main concerns were the amount of traffic that would be generated by such development and the effect this would have on the already congested highway network.

Lack of educational places, not only for the children from the new homes in Hartford, but also the children from other new large developments in adjoining parishes.

The protection of Marshall's Arm and the Weaver Valley.

Lack of services for example the main utilities and medical facilities including a doctor's surgery.

Parking.

Further comments and suggestions received at this event were analysed and where relevant modified.

*(see Appendix 8.14: map showing Grange Farm and Hollies Farm)*



## 6 Consultees

---

### 6.1 LOCAL CONSULTEES

During 2012 and 2013 a number of local stakeholders – organisations, councils and companies – were consulted in advance of the production of the Draft Neighbourhood Plan. A series of meetings and workshops were conducted, and letters sent. These included:

- Harrow Estates (acting on behalf of Redrow Homes);
- Hartford schools;
- Hartford churches;
- Local town and parish councils;
- CW&C
- Members of Parliament.

*(See appendix 8.11; detailed list of local consultees,)*

### 6.2 CONSULTEES, 2014

During the seven week consultation period, between April and June 2014, following publication of the Draft Plan, a number of agencies, organisations and other stakeholders were invited to comment on the Plan. CW&C officers, and all educational establishments in Hartford, were consulted.

*(See appendix 8.12; detailed list of consultees, 2014)*

## 7 Main issues and how the plan addresses them

---

### SUMMARY OF PRE-SUBMISSION (REGULATION 15) CONSULTATION

7.1 As required by Regulation 15 of the Neighbourhood Planning (General) Regulations 2012 this section of the Consultation Statement:

(a) provides details of the persons and bodies who were consulted about the proposed neighbourhood plan:

(b) explains how they were consulted:

(c) summarises the main issues and concerns raised by the persons consulted:

(d) describes how these issues and concerns have been considered and, where relevant, addressed in the proposed neighbourhood development plan.

7.2 The formal pre-submission Draft Hartford Neighbourhood Plan was circulated/deposited for consultation between 25 April 2014 and 13 June 2014.

#### Who was consulted?

7.3 Statutory consultees, neighbouring parish councils, key service providers, voluntary organizations, community groups, local shops and residents were consulted about the draft Neighbourhood Plan.

*(see Appendix 8.12 for detailed list of consultees)*

#### How were they consulted?

7.4 Statutory consultees and stakeholders were informed of the consultation by email, or letter where no email address was available.

7.5 Residents of Hartford were informed of the consultation on the draft of the Neighbourhood Plan by the following means.

- In advance of the consultation period a leaflet was delivered to every household in Hartford. This leaflet set out details of ways in which residents could have the opportunity to view

the draft plan and how they could make comments.

- A banner was erected in a prominent part of the village informing residents of the Open Day to view the draft plan.
- Press release in *Hartford News* and the *Mid Cheshire Guardian*.



- An Open Day was held in the Village Hall on Saturday 26 April where over 80 residents attended to view the draft plan, speak to members of the HNPWG and make comments.
- The Parish Council website gave details of the draft plan and had a facility by which to make comments.

(see Appendix 8.10: leaflet)

7.6 This consultation statement provides a summary of each of the above stages of community engagement prior to the 6 week statutory requirement:

- a) providing details of the persons and bodies who were consulted.
- b) explains how they were consulted:
- c) summarises the main issues and concerns
- d) addressing all issues and concerns.

7.7 Following the end of the community consultation period, on 13 June 2014, all comments were considered and, where relevant, addressed in the proposed Draft Neighbourhood Plan.

7.8 Issues and comments received following the statutory consultation period are recorded in the accompanying document.

## 8 Appendices

---

8.1	Terms of reference
8.2	Vision Statement
8.3	Comments from 4 July meeting
8.4	<i>Hartford News</i> Questionnaire
8.5	Census information in <i>Hartford News</i>
8.6	Household questionnaire
8.7	Shops and business questionnaire
8.8	Schools and students questionnaire
8.9	Questionnaire results published in <i>Hartford News</i>
8.10	Leaflet
8.11	Details of list of consultees
8.12	Details of list of consultees
8.13	<b>Map</b> the Parish of Hartford
8.14	<b>Map</b> settlement boundary, Conservation area, Grange Farm and Hollies Farm

### 8.1 TERMS OF REFERENCE

#### 8.1.1 Introduction

Hartford Parish Council has agreed to work with Hartford Civic Society to produce a Neighbourhood Plan.

The terms of reference outline the aims and responsibilities of the main partners involved in the production of a Neighbourhood Plan for Hartford.

The Neighbourhood Plan must meet the wider ambitions for growth and sustainability in the Local Authority's development plan.

#### 8.1.2 Mission Statement

To preserve and enhance the built, natural and historical environment of the local area and the distinctive character of Hartford whilst allowing for sustainable economic and social growth and development.

#### 8.1.3 Membership of the Working Group

The working group will be made up of 4 Parish Councillors and 4 members of Hartford Civic Society.

Members of the community will be co-opted onto the working group to undertake various work streams involved in producing a Neighbourhood Plan.

#### 8.1.4 The aims of the Working Group

- The aim of the Working Group is to develop and oversee a process that will result in the preparation of a Neighbourhood Plan for Hartford.
- To review and consolidate its Parish Plan and Village Design Statement in line with the new Localism Bill and the National Planning Policy Framework.
- To engage all sections of the community in working together to develop the Hartford Neighbourhood Plan.

To identify all the important aspects of life in Hartford that contribute to our quality of life in order to plan for the future.

## 8.2 VISION STATEMENT

Our vision for Hartford for the next 15-20 years is to maintain and enhance the quality of life for all sections of the community, ensuring that Hartford retains its village character but maintains its strong links with Northwich Town and its adjoining parishes.

To achieve this vision we will protect Hartford's built, historical and natural environment ensuring that our green spaces and widespread mature trees are protected.

We will promote nature conservation and protect areas of special environmental value.

We will allow sustainable economic and social growth and development and will seek to enhance facilities for all local people in order that the community can take further advantage of a full social and active life style.

We will oppose large, major unsustainable housing developments within the Parish.

We will support developments of modest size that maintain and enhance our built environment and meet the aims of our vision for future generations.

To ensure that our village develops over the coming years we will support the local economy to expand by encouraging business and employment opportunities to people of all ages.

We will constantly monitor transport, safety and service issues to ensure that Hartford remains a safe place to live.

We will take forward the ethos of the Localism Bill in producing our Neighbourhood Plan, embracing the concept of local distinctiveness that contributes to a sense of place and well being for the community and future generations.

## 8.3 COMMENTS RECEIVED FOLLOWING MEETING OF 4 JULY 2012

Comment received following meeting of 4 July 2012

Of the 169 people who attended the meeting, 64 residents completed the comments form showing 100 percent support for the production of a Neighbourhood Plan for Hartford.

The following nine areas were listed as concerns by these residents.

All areas fell within the six key issues proposed for the Neighbourhood Plan.

The biggest issue of 24% related to traffic, closely followed by housing with 20%.

The value of the environment was reflected in that 19% of those completing the comments form valued the environment and the areas of open countryside and green field surrounding the village.

The viability of the village economy, facilities and schools rated 8% each in residents concerns followed by parking and the need to retain the character of the village at 6% each.

Finally security was highlighted by 1.5% of those commenting at this event.

All these written comments along with verbal suggestions received at the meeting were documented and considered at the workshop on 6 August 2012

## 8.4 NEIGHBOURHOOD PLAN QUESTIONNAIRE HARTFORD NEWS, SEPTEMBER 2012.

Residents were invited to submit their responses to a questionnaire, published in *Hartford News* in September 2012. The edition also introduced the remits of the six working groups that were established to help develop the Neighbourhood Plan, and presented the first version of the Vision Statement.



### Hartford Neighbourhood Plan Vision Statement

Our vision for Hartford for the next 15-20 years is to maintain and enhance the quality of life for all sections of the community, ensuring that Hartford retains its village character but maintains its strong links with Northwich Town and its adjoining parishes.

To achieve this vision we will protect Hartford's built, historical and natural environment ensuring that our green spaces and widespread mature trees are protected.

We will promote nature conservation and protect areas of special environmental value.

We will allow sustainable economic and social growth and development and will seek to enhance facilities for all local people in order that the community can take advantage of a full →

### Introducing the Neighbourhood Plan

The Localism Act of 2011 introduced new rights and powers, allowing local communities to shape the way their villages and towns develop. The new National Planning System also gives greater influence to communities over how their towns and villages develop. To achieve this, a village has to produce a Neighbourhood Plan.

Hartford Parish Council resolved to begin the process of creating a Neighbourhood Plan and formed a Neighbourhood Plan Working Group to work with Hartford Civic Society and the community. In July, the group set out the aims and objectives of a Neighbourhood Plan.

The Plan must accommodate the requirements of the Local Plan of Cheshire West and Chester Council within the National Planning Policy Framework to provide a sustainable future for the village.

Hartford has a natural environment that is highly valued by residents, with open green areas and many mature trees that are very important to its character. It encompasses areas of significant environmental value.

Hartford has doubled in size during the last fifty years. It is unique in Europe for a village of its size in having ten educational establishments, attended by 6,000 students daily. Unfortunately, this creates extreme traffic congestion at certain times of day. It is, however, served by two railway stations and regular 'bus services.

Hartford has a group of local shops which are supported by the community but parking is a concern for attracting passing trade. Community and sports opportunities are available but there is a lack of other services.

We have set up a number of working groups to look at the different aspects of the Plan. Please consider whether you have skills or experience that you could bring to one of them, and let us know, either by means of the questionnaire (opposite) or by email (address above) if you can get involved. Also visit [www.hartfordneighbourhoodplan.org.uk](http://www.hartfordneighbourhoodplan.org.uk).

### Working Groups

There are six working groups, and the range of skills that would be of benefit to them is long and varied. Whether you can bring occupational expertise, or any other experience, we'd love to hear from you...

#### Protecting the built environment

Development needs to be sustainable, meet the needs of local people of all ages, and be appropriate in design, location, size and cost.

#### Transport, communication, infrastructure

Roads should not become more congested at peak times. Road safety for vehicles and pedestrians should be improved, and better parking provision available. Cycle routes and public transport should be developed.

#### Local economy

We should encourage and support local business. Jobs and enterprise opportunities should be available for local people of all ages.

#### Quality of life

The concept of local distinctiveness that contributes to a sense of place and well being which contributes to the quality of life for the community should be embraced.

#### Facilities

Leisure and recreation facilities are in place for all members of the community. We should also ensure that there is adequate provision of healthcare and other services.

#### Conservation

There should be a focus for nature conservation in providing an additional layer of protection to our areas of special environmental value, as well as the trees and green, open spaces that characterise Hartford.



Please would you take a few minutes to complete and submit the following questionnaire? Your response will form part of the consultation that is a key aspect of the creation of our Neighbourhood Plan. You can respond as a household or as an individual; for extra copies, please email [hartfordnp@gmail.com](mailto:hartfordnp@gmail.com) or feel free to make your own photocopies.

What do you like most about living in Hartford?

What do you like least about living in Hartford?

What should be preserved in Hartford?

What could be done to improve the quality of life in Hartford?

How would you like to see Hartford develop?

If you are interested in the future of Hartford, are you able to join one of the working groups listed on page 2?

You do not need to give us your contact details unless, of course, you wish to participate in the creation of Hartford's Neighbourhood Plan:

Name:

Telephone:

Email:

Neighbourhood Plan Questionnaire,  
231 Hartford Road, Davenham, CW9 8JT  
or email [hartfordnp@gmail.com](mailto:hartfordnp@gmail.com)  
or hand in at the Hartford JAG stall on  
Saturday 8 September (see page 5 for details)

→ social and active life style. We will oppose unsustainable housing developments within the Parish but support those of modest size that maintain and enhance our built environment and meet the aims of our vision for future generations.

To ensure that our village develops over the coming years we will encourage the local economy to expand by encouraging business and employment opportunities to people of all ages.

We will monitor transport, safety and service issues to ensure that Hartford remains a safe place to live.

We adopt the ethos of the Localism Bill in producing our Neighbourhood Plan, embracing the concept of local distinctiveness that contributes to a sense of place and well being for the community and future generations.

## 8.5 2011 CENSUS DATA PRESENTED IN *HARTFORD NEWS*, MARCH 2013.

A double page spread in *Hartford News* presented a selection of data from the 2011 Census in an item headed *Hartford by numbers*, co-authored by a member of the Neighbourhood Plan Working Group and the editor of *Hartford News*. It featured a mix of basic information about the characteristics of the village, including some historical population data, and some of the more esoteric facts to be gleaned from the Census. It also included details of how readers could access all the data about Hartford made available following publication of the 2011 Census.



# Hartford by numbers

## 2011 census data sheds light on our village

Do you remember filling in the census form, two years ago, in March 2011? Although some of the summary data has been available since July last year, only on 30 January 2013 was data released down to the parish level (writes John Szostek).

What does it tell us about Hartford? Firstly, it is a Parish of 2,336 dwellings, with 2,264 households, containing 5,556 persons. There were 71 unoccupied dwellings two years ago.

There is data on the age of residents, their economic activity, general health, marital status, qualifications, religion, how people travel to work, even whether households own a second home somewhere. All this data relates back to the Household Questionnaire. How does Hartford's data compare with the national data for the 53 million people living in England as a whole?

In March 2011 we believed that we were healthier than the rest of the country. 54% of us said that we had very good health compared with only 47% for England as a

Hartford has a much higher rate of owner occupancy than England as a whole.

Since 1961 the population of Hartford has more than doubled.



whole, whereas 3% of us said that we were in bad, or very bad, health, compared with 7% in the North West and 6% in England.

The age profile for Hartford shows a marked difference with that for England - we don't have so many 18 to 36 year olds. This could be for a number of reasons. Many families, for example, choose to live in Hartford because of the good choice educational establishments. So many of our children then go on to college and university. Students are counted as living at their term time address. Then, when they qualify, and if they are able to find work, many of them move away. The dwelling tenure data shows that of our 2,264 households, a whopping 88% of them are owner occupied (with or without a mortgage). We have only 65 "Social Rented" and 177 "Private Rented" households, that's only 11% of all dwellings (including the 12 "Rent Free" responses), which is less than a third of the 35% for England as a whole. So there are not many properties available for young adults to rent and many can't afford to buy. The age profile graph also shows that we



have fewer under-fives than nationally. Again, this may be a consequence of families moving into the village as their children reach primary school age. At the other end of the scale, on Census day, two of England's 10,576 centenarians lived in Hartford.

Data on economic activity is measured for the 3,971 "Usual Residents Aged 16 to 74". 6% of these residents work mainly at or from home, compared with 4% for the country as a whole. Those using a car or van to get to work is, at 54%, considerably higher than the national figure of 40%. 384 residents work in the education sector (representing a significantly higher percentage for Hartford than for England as a whole), but this still means many of the employees of our ten educational establishments have to commute to Hartford.

Most of us (93%) answered the (voluntary) "What is your religion" question. 72% said Christian (compared with 59% for England),



## Two by two



Hartford's age profile shows a marked dip between the ages of 18 and 35, when compared with that for England.

It would seem Hartfordians are happier living together.

Levels of car ownership are significantly higher in Hartford.

20% said no religion, and the remaining 66 Hartford residents replied Buddhist, Hindu, Jewish, Muslim, Sikh or "Other Religion".

Finally, how many of us have second homes? The answer is 266 - that's almost 5% - with 105 of the "second addresses" being outside the United Kingdom. So if you tire of Hartford, with its couples, cars and owner occupied houses, or you crave the company of some missing twenty-somethings, 5% of you always have an option...

To look at the Office for National Statistics data sets for Hartford yourself (there are 188 of them to peruse), go to the website [www.neighbourhood.statistics.gov.uk](http://www.neighbourhood.statistics.gov.uk), type in "Hartford", and click "Parish".

## Hartford, in love with its cars (and vans)...



## 8.6 HOUSEHOLD QUESTIONNAIRE

A copy of the household questionnaire was posted to every residence in Hartford, along with a reply-paid envelope, to encourage as high a rate of response as possible. In the event some 30% of residents responded to the questionnaire, a very pleasing response.

# Hartford's Neighbourhood Plan

## Questionnaire

Have your say about the future of our lovely village



here's how you can do it.....

**Hartford is producing a Neighbourhood Plan which will summarise the views of the local community in terms of:**

**Development** – how much housing, offices, factories, shops, leisure facilities are required.

**Infrastructure** – green open spaces, play facilities, surgeries, schools, etc.

All development within our local area should meet the needs of the present without compromising the ability of future generations to meet their own needs.

The Government passed the Localism Bill in November 2011. It means that approved Neighbourhood Plans are protected by law and have to be taken into consideration when future development is proposed.

Cheshire West and Chester Council believe they have a requirement to build an additional 21,000 dwellings and some of this will have to be absorbed into our village. Any Neighbourhood Plan would need to take into account the housing need within the Borough.

Help us to get the most out of the life we enjoy in Hartford:

*What matters most to you in what we have here?*

*What aspects of our community need our support and protection?*

*What changes do you want to see?*

*What needs to be brought in or developed?*

Please fill in this questionnaire. It has been devised with the help of the comments already gathered during the Focus Group discussions/street interviews around the village. The questionnaire is anonymous and will be used to understand what the community opinion as a whole is. This then provides the basis for the Draft Plan as a reflection of the consensus views of the residents. Please note we have not asked questions which can be answered from data available from the 2011 census.

The questionnaire has been produced by volunteers of the Parish Council's Neighbourhood Plan Working Group and has been distributed as economically as possible.

If you need any more space for comments and/or suggestions please include these on a separate sheet of paper.

Please help maximise its potential by using it to express YOUR views.

Further copies, if required, can be obtained from Jo O'Donoghue (Clerk, Hartford Parish Council) on 01606-41862

Please post your questionnaire by **Monday 22<sup>nd</sup> July** in the **FREEPOST** envelope provided, or return to **Elson Newsagents, Chester Road**.

If you would like any assistance with completing this questionnaire, please contact Rita Hollens (Chair, Hartford Neighbourhood Plan Working Group) on 01606-871077 or email [rita.hollens@talktalk.net](mailto:rita.hollens@talktalk.net)

*Thank you for your support*

## Section One – Village Statement

1 Which of the following describe the essential characteristics of Hartford? (Please tick)

	Not important				Highly important
	1	2	3	4	5
Conservation area and its listed buildings					
Marshall's Arm					
River Weaver Valley					
Open/green spaces inside the village					
Thorn Wood/Other wooded areas/Trees					
Working farms surrounding village					
Separation from other surrounding villages by fields, countryside					
Overall balance of population and facilities					
Varied building styles throughout the village					

## 8.6 HOUSEHOLD QUESTIONNAIRE

Pages three and four.

**2 What do you enjoy/like about living in Hartford? (Please tick)**

	Not important 1	2	3	4	Highly important 5
Village identity/ feeling part of a community					
Village activities/community groups					
Easy access to motorways					
Easy access to the country side/rural atmosphere					
Familiar service in local shops and businesses					
Green open spaces within and around the Village					
The abundance of trees					

Comments, if any (please write in) .....


---

**Section Two – Housing**

**1 What do you think about the amount of housing currently available in Hartford?**

(Please tick)

Need a lot more	
Need a few more	
About right	
Too many already	



**2 What do you think about the composition of housing in Hartford?**

(Please tick)

	Need more	Need a few more	About right	Too many already
Flats				
Bungalows				
Low cost/affordable/starter homes				
Family housing				
Luxury housing				
Rented accommodation				
Sheltered housing				
Retirement housing/apartments				
Eco friendly housing				
Two-storey houses				
Three-storey houses				
Social housing				

Comments, if any (please write in) .....

---

**Section Three – Building Development**

**1 In your opinion how many new homes should be built in the village in the next 20 years? (Please tick)**

0-25	26-50	51-75	76-100	101-150	151-200	200+

**2 In your opinion where would you like to see any new development taking place?**  
All sites have been suggested to Cheshire West and Chester Council by developers or landowners as being suitable for development. What are your views about the suitability of these sites bearing in mind the impact such development would have on the Village?

Please tick the boxes below:

Site name	No of properties identified	Not suitable at all 1	2	3	4	Highly suitable 5
Field north west of Fullerton Road	35					
Pool field, School Lane	74					
Land at the Hollies, 79 School Lane	21					
Land to rear of 4+18 Bradburns Lane	12					
Land off Carriage Drive	24					
Land North of Eton Court	29					
Land between High Acre and Quaintways	38					
Wallerote Road (off Burrows Hill, former gasworks)	32					
Land between Mornant Avenue and St Vincent Dr	29					

If you answered 'Not suitable' to any of the locations above, please give reasons why you believe this to be the case. ....

---

**3 Bearing in mind that some development will have to take place, are there any areas in the Hartford Parish which you think are important to be protected as a green space? Please indicate below which areas and any comments as to why you think this area should be preserved.**

Comments, if any (please write in) .....

---

## 8.6 HOUSEHOLD QUESTIONNAIRE

Pages five and six.

4 If additional housing was to be built, what would you prefer? *(Please tick)*

	Not important 1	2	3	4	Highly important 5
One large estate					
A number of smaller developments					
Individual released plots					
Brownfield (previously developed land)					
Garden infill development					

5 What style of housing would you like to see included in any new housing developments?

Style	Not suitable at all 1	2	3	4	Highly suitable 5
Single storey					
Two-storey					
Three-storey					
Flats /apartments					
Period style					
Modern style					
Smaller style houses					
Eco friendly					
Self build					

Comments, if any *(please write in)* \_\_\_\_\_

\_\_\_\_\_

\_\_\_\_\_

\_\_\_\_\_

**Section Four - Village Facilities**

1 How important to you, individually or as a family, are the following village facilities? *(Please tick)*

	Not at all important 1	2	3	4	Highly important 5
Marshall's Arm					
River Weaver Valley					
Grange Park (Bradburns Lane)					
Parker Avenue Play Area (off Hodge Lane)					
Football pitch					
Jubilee Wood					
Village Hall					
Bowls Club					
Cricket pitch					
Tennis Courts					
Library Van					
Public footpaths					
Allotments					
Local shops					
Vale Royal Woods (access by blue bridge)					
Thorn Wood (Northwich Road)					

2 Which of the following amenities do you use? *(Please tick)*

	Never	Rarely	Sometimes	Often
Post Office				
Veterinary Practice				
Dry Cleaners				
Hair & Beauty				
Florist				
Garage services				
Public Houses & Social Club				
Butcher				
Bistro/takeaway/cafes				
Children's clothes and shoes				
Newsagent				
Gift Shop				
Chemist				
Supermarket				
Charity Shop				
Bakery				
Do you read Hartford News?				
Video Shop				

3 Bearing in mind the implications of potential new buildings, parking, traffic etc, which of the following shops, services and amenities would you like to see in the village? *(Please tick)*

	No	No preference	Yes
Greengrocers			
More restaurants/cafes			
DIY shop			
Doctors surgery			
Dental practice			
Opticians			
Wider range of takeaway restaurants			
Recycling facilities			
More sports facilities			
Youth centre			
Additional allotment plots			
Small businesses			
Facilities for senior citizens			
Retirement Accommodation			
Farmland with working farms			

Comments, if any *(please write in)* \_\_\_\_\_

\_\_\_\_\_

\_\_\_\_\_

\_\_\_\_\_

\_\_\_\_\_

## 8.6 HOUSEHOLD QUESTIONNAIRE

Pages seven and eight.

**Section Five- Education**

1 How well do you think the village is served with educational facilities? *(Please tick)*

	Don't know	Poor	Satisfactory	Good	Very good
Preschool					
Play groups					
Day Nursery provision / child minding					
Parent & toddler groups					
Nursery places					
Primary schools					
Child places available					
Breakfast clubs					
After school clubs					
Holiday Clubs					
High Schools					
Student places available					
Extra facilities					
Further Education					
General opportunities					
Comments, if any <i>(please write in)</i>					

## Section Six – Transport and Traffic

1 In your opinion are any changes needed with regards to the following transport/traffic issues? *(Please tick)*

	No change needed	2	3	4	Change needed 5
Speed of vehicles through Hartford					
Bus services					
Parking in Hartford					
Road maintenance					
Cycle and footpaths					
Speed humps/traffic calming					
Train services					
HGV traffic					
Suggestions for change needed <i>(please write in)</i>					

## Section Seven- Your Concerns

1 To what extent do any of the following cause you direct concern within the village? *(Please tick)*

	Not important at all 1	2	3	4	Highly important 5
Burglary					
Vandalism					
Car crime					
Anti-social behaviour					
Litter					
Fly tipping					
Dog fouling					
Noise pollution					
Air pollution					
Traffic congestion					
Other concerns, if any <i>(please write in)</i>					

## Section Eight – Businesses

1 Do you operate a business from the village? *If so, what is it?*

2 Is there any support the village could provide to you and your business?

## Section Nine – Demographics *(optional section)*

We would very much appreciate it if you could complete the following demographic questions. This information will demonstrate that we have gained the views of a cross section of the population.

1 What is your postcode? C W 8 - - - -

2 To which age group do you belong?

Under 20	20 – 29	30 – 39	40 – 49	50 – 59	60 – 69	70+

3 What is your gender? MALE FEMALE

## 8.7 BUSINESSES' QUESTIONNAIRE

Circulated to  
businesses in  
Hartford.

### *QUESTIONNAIRE FOR SHOPS AND BUSINESSES*

Hartford is producing a Neighbourhood Plan which will summarise the views of the local community including shops and businesses in terms of:

**Development** – how much housing, factories, shops, leisure facilities are required.

**Infrastructure** – green open spaces, play facilities, surgeries, schools etc.,  
All development within our local area should meet the needs of the present without compromising the ability of future generations to meet their own needs.

The Government passed the Localism Bill in November 2011. It means the approved Neighbourhood Plans are protected by law and have to be taken into consideration when future development is proposed.

Cheshire West and Chester Council believe they have a requirement to build an additional 21,000 dwellings and some of this will have to be absorbed into our village. Any Neighbourhood Plan would need to take into account the housing need within the Borough.

#### **Help us to get the most out of the life we enjoy in Hartford:**

A comprehensive questionnaire is being delivered to every household in Hartford to gain the views of the residents but it is just as important for the Neighbourhood Plan Working Group to gain the views of people who operate shops and businesses in the village.

We would therefore ask if you would please fill in this abridged questionnaire relating specifically to the shops and businesses in the village to assist us in producing a Neighbourhood Plan to ensure the future sustainability of Hartford for the future.

**Please help maximise its potential by using it to express YOUR views.**

Further copies, if required, can be obtained from The Clerk on 01606 41862  
Please have your questionnaire ready for collection by 11<sup>th</sup> July

*Thank you for your support.*

### **Section One – Hartford Village High Street**

How long have you been operating your business in Hartford?

.....  
.....  
.....  
.....

What do you value most about having a business or shop in the village.?

.....  
.....  
.....  
.....  
.....

Are there any long or short term issues with operating your business in Hartford ?

.....  
.....  
.....  
.....  
.....

The Neighbourhood Plan extends for the next 20 years. Where do you see your business during this period of time?

.....  
.....  
.....  
.....

### **Section Two – Housing Development**

In your opinion how many new homes should be built in the village in the next 20years?

0-25            26-50            51-75            76-100            101-150            151-200

How would new development affect your business?

.....  
.....  
.....  
.....  
.....

## 8.7 BUSINESSES' QUESTIONNAIRE

Pages three and four.

### Section Three – Village Facilities

Do you feel that there is a variety of shops and businesses in the village at the present time?

.....

.....

If NO please indicate what additional retail outlets could be introduced?

.....

.....

.....

.....

### Section Four – Transport and Traffic

Do you or any of your staff on a daily basis use the bus or train to get to your business?

.....

.....

Do you or any of your staff on a daily basis walk or cycle to get to your business?

.....

.....

Do you or any of your staff on a daily basis use your car to get to your business?

.....

.....

Is parking a problem for you and staff at your business premises?

.....

.....

How do you think that parking can be improved outside the shopping area?

.....

.....

.....

.....

### Section Five – Improve and Assist

Can you suggest how the shops and businesses can be kept vibrant?

.....

.....

.....

What kind of support and assistance would you like to be available to ensure that the shops and businesses survive and expand over the next 20 years.?

.....

.....

.....

Have you any concerns or ideas that have not been covered in this questionnaire?

.....

.....

.....

.....

### Section Six

The questionnaire is anonymous but should you wish to add any further information please feel free to give your views.

.....

.....

.....

.....

.....

*Thank you for taking the time to complete this questionnaire it is very much appreciated*

## 8.8 SCHOOLS' QUESTIONNAIRE

Circulated to schools in Hartford, the questionnaire had two sections, for the headteachers and students of schools respectively.

### QUESTIONNAIRE FOR SCHOOLS AND COLLEGE

Hartford is producing a Neighbourhood Plan which will summarise the views of the local community including schools and pupils and students in terms of:

**Development** – how much housing, offices, factories, shops, leisure facilities are required.

**Infrastructure** – green open spaces, play facilities, surgeries, schools etc.,

All development within our local area should meet the needs of the present without compromising the ability of future generations to meet their own needs.

The Government passed the Localism Bill in November 2011. It means that approved Neighbourhood Plans are protected by law and have to be taken into consideration when future development is proposed.

Cheshire West and Chester Council believe they have a requirement to build an additional 21,000 dwellings and some of this will have to be absorbed into our village. Any Neighbourhood Plan would need to take into account the housing need within the Borough.

**Help us to get the most out of the life we enjoy in Hartford:**

A comprehensive questionnaire is being delivered to every household in Hartford to gain the views of the residents but it is just as important for the Neighbourhood Plan Working Group to gain the views of the ten head teachers of our educational establishments as well as the pupils and students that attend our schools and colleges.

We would therefore ask if you would please fill in this abridged questionnaire relating specifically to education and young people to assist us in producing a Neighbourhood Plan to ensure the future sustainability of Hartford.

**Please help maximize its potential by using it to express YOUR views.**

Further copies, if required, can be obtained from the Clerk on 01606 41862

Please post your questionnaire by Friday 14<sup>th</sup> July in the stamped addressed envelope provided.

*Thank you for your support.*

### Section One – Development of your school --- Head Teacher

How do you envisage the development of your school/college over the next 20 years?

Is there scope for growth and expansion?

How would you see population trends and census information affecting your school?

With the development of 1200 dwelling on The Winnington Urban Village with no provision for education, added to the number of approved developments in surrounding villages how do you consider this will affect your school?

What other elements do you consider will affect your school in the future?

Does your present school building meet the fit for purpose and development needs that will be required for the next 20 years?

Pages three and four

.....

.....

.....

.....

.....

.....

.....

.....

.....

.....

.....

.....

.....

Section Two --- Students and Pupils

If no where do you live?.....

What is it that you like most about Hartford?

Is there anything you dislike about Hartford?

What sport and social facilities do you enjoy most?

What other facilities would you like to see available for young people in Hartford?

Do you belong to any groups or organisations outside school?

Do you do any charity work? YES NO  
If yes please tell us what you do.

## 8.8 SCHOOLS' QUESTIONNAIRE

Page five

How do you get to school or College (please circle)

Car          bus          train          cycle          walk

If you travel to school by car please tell us why this is your method of travel?

.....

.....

If you travel by car is there any way you could walk or cycle to school?

.....

.....

Do you use any of the open space and play areas in Hartford, and if so which ones?

.....

.....

Do you use the shops in Hartford, YES      NO      If yes please tell us which ones?

.....

.....

Should we consider a large number or a small number of new houses to be built in Hartford?

LARGE NUMBER

SMALL NUMBER

Please circle and then tell us why you have made this decision.

.....

.....

.....

Who do you think these houses should be for? (please circle and tell us why)

Young people    families    the elderly    people on low incomes    local people

.....

.....

You are the future generation so please tell us how you would like to see Hartford develop over the next 20 years?

.....

.....

*Thank you for taking the time to complete this questionnaire it is very much appreciated.*

## 8.9 QUESTIONNAIRE RESULTS PUBLISHED IN *HARTFORD NEWS*, SEPTEMBER 2013

A summary of the results of the household questionnaire was published in *Hartford News*, following analysis of the responses from residents. There were over 700 in all; use of a spreadsheet allowed detailed analysis (including the variation in response from different parts of the village, and the ages of those who took part) to be undertaken.

Strong feelings were expressed about the features of Hartford that people wanted to preserve and the nature of development they wanted to see in the village (it should be recalled

### Hartford's Neighbourhood Plan

#### Questionnaire

Have your say about the future of our lovely village



here's how you can do it.....

In July, Hartford's Neighbourhood Plan Working Group received more than 700 responses to its questionnaire, about the future of our village, representing the opinions of a very high proportion of the residents and business people who live and work in Hartford. Here is what they said...

By any standards, the feedback obtained from this questionnaire is remarkable. To receive so many completed documents, from a population the size of that of Hartford, clearly demonstrates the level of interest that people have in the village. This is not the biased opinion of a small group, the "usual suspects", that it could have been, but represents the opinions of a wide range of people in Hartford. Data from every single response has been collated, to produce the figures in this document. If you are one of the many people who completed and returned a questionnaire, thank you; your response, your opinion, has been included in these figures.

The success enjoyed in obtaining so many responses was helped, of course, by the distribution of the questionnaire to every household and business in Hartford, and provision for its return by "freepost", or to the local newsagent. Funding has come from the "Locality" initiative. Its "Supporting Communities and Neighbourhoods in Planning Programme" helps local groups develop neighbourhood plans (more information can be found at [www.locality.org.uk](http://www.locality.org.uk)).

Analysis of the data has relied on the hard work of a small army of volunteers, busily inputting figures into spreadsheets, so that the number-crunching can be undertaken accurately. The Neighbourhood Plan Working Group is indebted to them.

## THE RESULTS

#### Who took part?

The simple answer is that over 30% of households in Hartford contributed to this data. However, there are some relevant details.

Firstly, the age of respondents was typically higher than the average for the population as a whole; in the 2011 Census, the mean age of residents in Hartford was 42.9 (compared with a 39.2 in England); the mean age of respondents to the questionnaire was over 58. The contrast is still stark if an assumption is made that few, if any, questionnaires would be completed by under 18s (those too young to vote); the mean age of Hartfordians over 18 is 52.4 (again higher than England as a whole). You may recall that Hartford has



### THE RESULTS

fewer than average inhabitants between the ages of 20 and 35 (a detailed review of the 2011 Census data appeared in the March 2013 edition of *Hartford News*).

#### Living in Hartford

The top five responses...

Which of the following describe the essential characteristics of Hartford?

Open/green spaces inside the village	4.66
Separation from other villages by fields, countryside	4.55
Overall balance of population and facilities	4.49
Thorn Wood/other wooded areas/trees	4.20
River Weaver Valley	4.17

What do you enjoy/like about living in Hartford?

Green open spaces within and around the Village	4.68
Easy access to the countryside/rural atmosphere	4.47
The abundance of trees	4.42
Familiar service in local shops and businesses	4.21
Village identity/feeling part of a community	4.06

To what extent do the following cause you direct concern within the village?

Traffic congestion	4.63
Dog fouling	3.69
Litter	3.41
Noise pollution	3.18
Anti-social behaviour	3.03

More than anything else, trees and green spaces characterise Hartford. Respondents are anxious to see that the Weaver Valley is protected; trees in the village itself are also greatly valued.



However, it was disappointing to note that comparatively few younger residents appeared to want to have a say about the future of their village.

Many questionnaires were answered jointly, but of those completed by an individual, 55% were completed by a male.

Some of the highest rates of participation were in the west of the village, including the Fullerton Road and Mornant Avenue estates, and Chester Road. Participation rates in School Lane, Whitehall Drive, Hodge Lane and parts of the conservation area were also high.

#### Making sense

Each response was given a score on a scale of 0 to 5 (where 5 generally represented the most positive response). A selection of comments is also reproduced on these pages.

"There should be a 'green belt' between Hartford and surrounding villages to protect the village nature of Hartford."

"Cars parked on pavements makes it difficult for those with wheelchairs or buggies."

"There is huge development taking place at Winnington Village - that, surely, is more than enough for this area?"

"I love the wildlife, particularly in the garden. The place would be desolate without the birds and animals."

"It's the village where I grew up and wanted to return to as an adult for my children to enjoy."

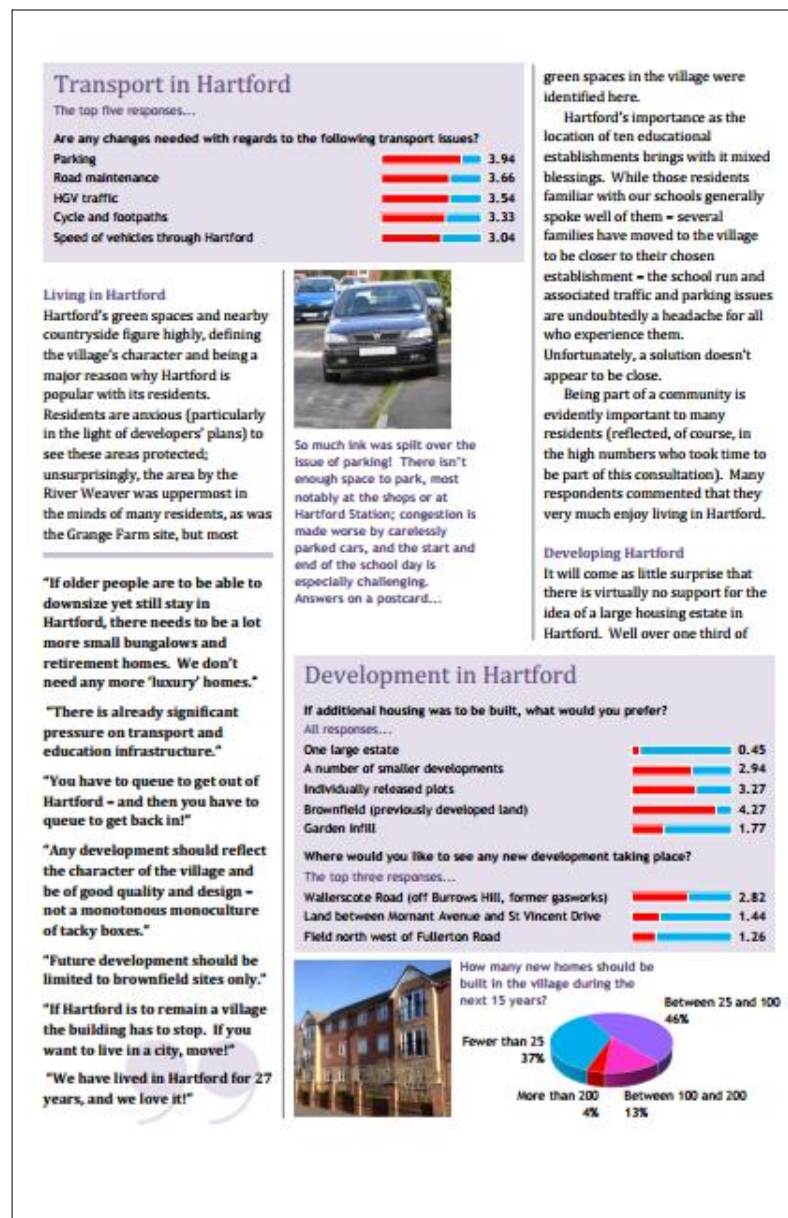
"A doctor's surgery is the most needed service in this village."

"I walk in the Weaver Valley regularly and see rare wildlife - including a kingfisher. This has to be preserved."

## 8.9 QUESTIONNAIRE RESULTS PUBLISHED IN HARTFORD NEWS, SEPTEMBER 2013

that the questionnaire was issued and analysed after developers had submitted their plans for 650 new houses in Hartford, but before the decision of the Secretary of State to permit the developments to go ahead).

As well as numerical analysis of the questionnaires, a digest of comments, made by residents, reflecting the tone of those made overall, was published.



## 8.10 LEAFLET PUBLICISING THE CONSULTATION PERIOD, PUBLISHED IN APRIL 2014

This leaflet was distributed to every house in Hartford, and copies left in shops and other outlets in the village. *Hartford News* also carried items publicising the consultation period in its April, May and June 2014 editions.

**Hartford Neighbourhood Plan  
Public Consultation**

The public consultation period for Hartford's Draft Neighbourhood Plan starts on Friday 25 April, and lasts until Friday 13 June. It is important that you, as a resident have the opportunity to see the Plan and the chance to express your views.

**See the Draft Plan at our Open Day:**  
**Saturday 26 April, from 10:00am to 1:00pm, at Hartford Village Hall.**

Members of the Neighbourhood Plan Working Group will be on hand to answer questions.

Then, for the whole of the consultation period of seven weeks, the Plan will be available to read at Northwich Library, at Hartford Post Office and from the Parish Council Clerk. The Plan will also be available to view on the Hartford Parish Council website.



 [www.hartfordparishcouncil.org.uk](http://www.hartfordparishcouncil.org.uk)  
Parish Council Clerk, Jo O'Donoghue 01606 41862

## 8.11 DETAILED LIST OF LOCAL CONSULTEES, 2012/2013

Local Consultation		
Organisation	Representative	date consulted
Harrow Estates	Tim Noden, Tim Booth	4 July 2012; open meeting
	Tim Noden, Tim Booth	5 September 2012; joint meeting
	Tim Noden, Tim Booth, Jennie Daly	1 October 2013; joint meeting
	Jennie Daly	12 October 2013; open day
	David O'Reilly, Tim Booth	8 April 2014; joint meeting
Richborough Estates	2012 (invitation to meet was declined)	
Hartford Manor School	Sandiway Energy, Bill Briggs	22 November 2012; joint meeting
Northwich Town Council		15 August 2012; letter
Cuddington & Sandiway Parish Council		15 August 2012; letter
Weaverham Parish Council		15 August 2012; letter
Whitegate Parish Council		15 August 2012; letter
Kingsmead Parish Council		15 August 2012; letter
Davenham Parish Council		15 August 2012; letter
Barnton Parish Council		15 August 2012; letter

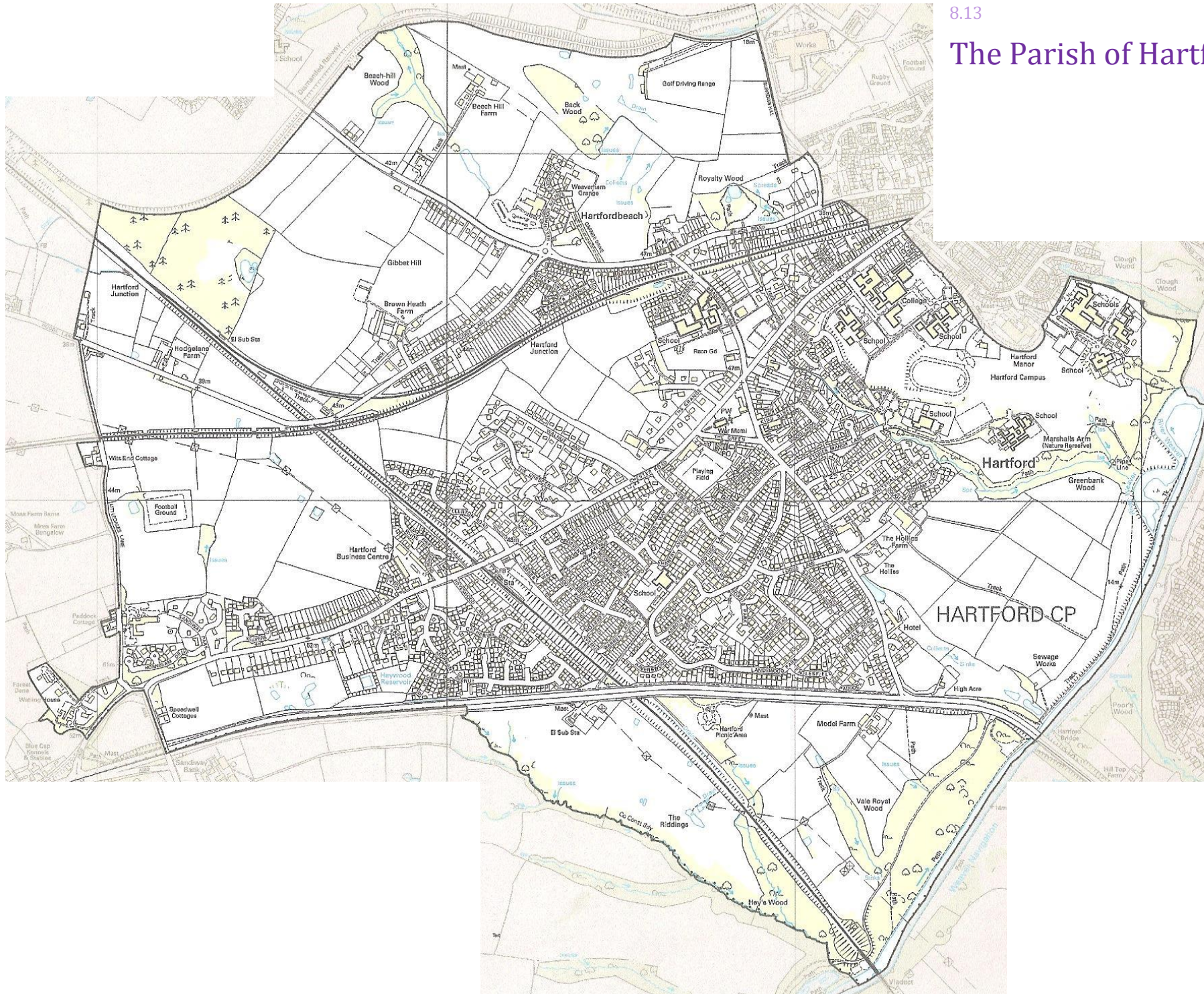
Hartford Methodist Church	Sue Benyon, Iris Isserlis, Rev Chris Pritchard, David Seddon, Gillian Seddon,	5 October 2012, meeting
Hartford Scouts	33 boys and girls aged 11-13	December 2012, workshop
CW&C	Jeremy Owen	May/June 2012; meetings
	Mark Allen	29 September 2012, 22 August 2013; meetings
	Duncan McCorquodale	23 October, 12 November, 5 & 17 December 2013; meetings
St John's Church	Helen Eccles, Rev Mike Smith	5 October 2013; meeting
Mid Cheshire Rail Users Association	John Hulme	12 November 2013; meeting
Mid Cheshire Community Rail Partnership	Sally Buttifant	12 November 2013; meeting
Member of Parliament	Graham Evans	3 May, 6 September, 15 November 2013; meetings
Housing Minister	Nicholas Boles	7 October 2013; meeting
Age UK Cheshire	Ken Clemens (CEO)	25 June 2013; meeting
Emerson Group	Paul Hubball, Peter Jones	16 August 2013; meeting

## 8.12 DETAILED LIST OF CONSULTEES, 2014

External consultees	
	date consulted
Environment Agency	25 April 2014
Natural England	25 April 2014
English Heritage	25 April 2014
Cheshire East Council	25 April 2014
Coal Authority	25 April 2014
Homes and Communities Agency	25 April 2014
Network Rail	25 April 2014
Highways Agency	25 April 2014
Marine Management Organisation	25 April 2014
Local Primary Care Trust	25 April 2014
Water/sewerage undertakers	25 April 2014
Cheshire Community Action	25 April 2014
Electronic communications network operators	25 April 2014
Electricity providers	25 April 2014
Gas providers	25 April 2014
Department for Communities and Local Government	25 April 2014
Canal and River Trust	25 April 2014
Police	25 April 2014
Fire service	25 April 2014
Traveller	25 April 2014
Cheshire Wildlife Trust	25 April 2014
North West Railusers	25 April 2014
London Midland Trains	
Weaver Navigation Society	
Marshalls Arm Local Nature Reserve	25 April 2014
Graham Evans MP	25 April 2014
Sustrans	
St John's Church	25 April 2014
Hartford Methodist Church	30 April 2014
Cllr K Musgrave	25 April 2014
Cllr H Manley	25 April 2014
Campaign for the Protection of Rural England	30 April 2014

Educational establishments		
Establishment	Headteacher	date consulted
Hartford Church of England High School	Mike Holland	29 April 2014
St Nicholas High School	Keiran Kelly	29 April 2014
St Wilfred's School	Mrs Weir	29 April 2014
Grange Junior School	Stephen Bennett	29 April 2014
Grange Senior School	Chris Jeffery	29 April 2014
Hartford Manor	Simon Kidwell	29 April 2014
Hartford Primary	Miss Fairweather	29 April 2014
Mid Cheshire College	Richard Hollywood	29 April 2014
Cloughwood	Adrian Larkin	29 April 2014
Greenbank	Mike McCann	29 April 2014

CW&C officers		
Role	Officer	date consulted
Housing Strategy and Enabling Officer	Lesley Bassett	25 April 2014
Legal Manager - Environment	Daniel Dickinson	25 April 2014
Senior Manager - Partnerships and Development	Alison Armstrong	25 April 2014
Programme Manager - Rural & Market Towns Growth and Prosperity	Chris Capes	25 April 2014
Specialist Environmental Services Manager	Ian Marshall	25 April 2014
Area Planning Manager	Nial Casselden	25 April 2014
Project Manager, Climate Change	Peter Bulmer	25 April 2014
Weaver Valley Project Manager	Catherine Fox	25 April 2014
Strategic Manager - Spatial Planning	Jeremy Owens	25 April 2014
Archaeology	Mark Leah	25 April 2014
Social Environmental Services	Jill Collins	25 April 2014
Community Rail Partnership	Sally Buttifant	25 April 2014
Heritage Sites	Moya Watson	25 April 2014

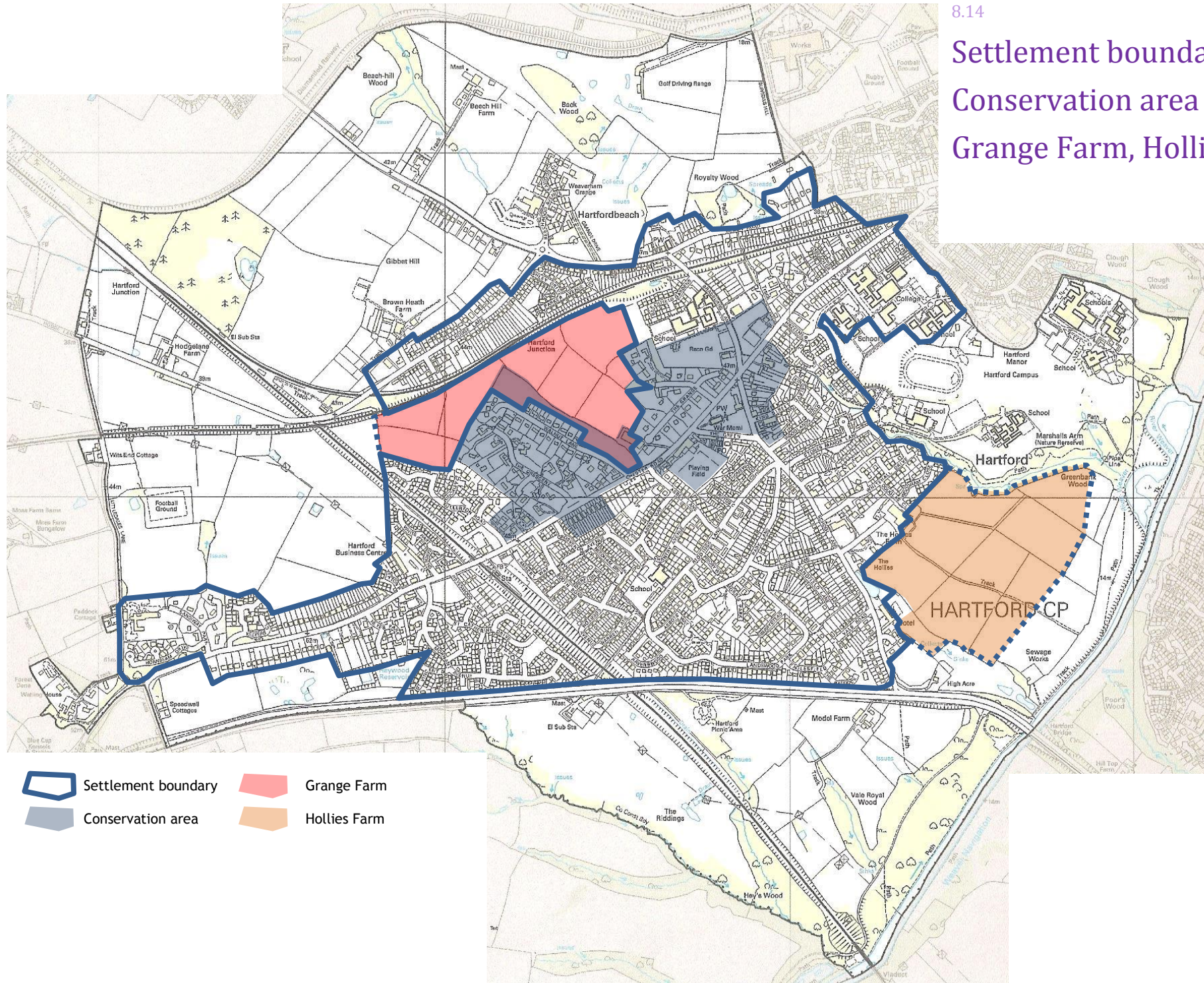


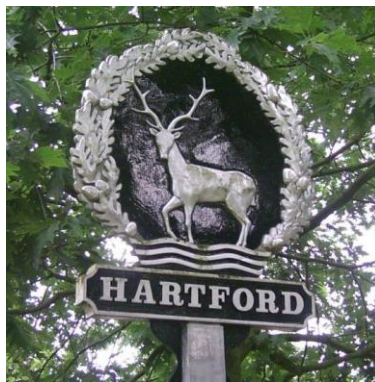
8.14

## Settlement boundary

## Conservation area

## Grange Farm, Hollies Farm





## **Hartford's Neighbourhood Plan**

### **Consultation Statement**

This Consultation Statement and the supporting consultation reports are considered to comply with Section 15(2) of part 5 of the 2012 Neighbourhood Plan Regulations.

© 2014 Hartford Neighbourhood Plan Working Group.